

JUNO®

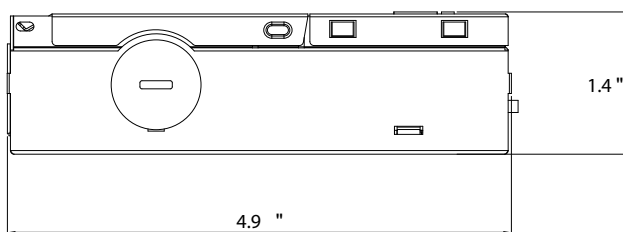
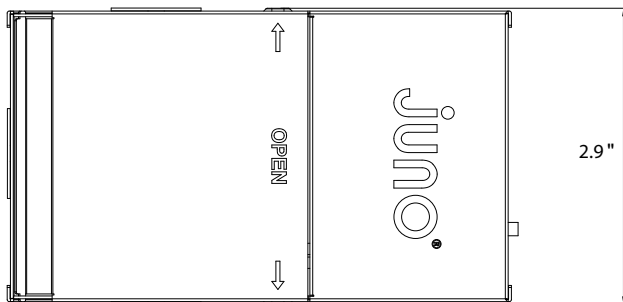
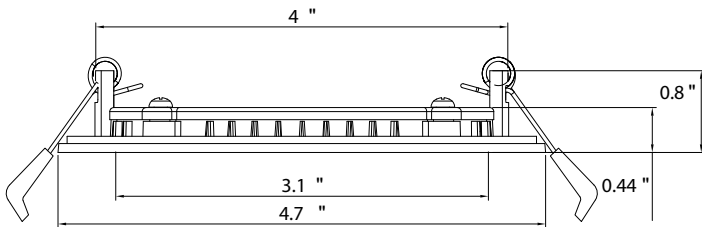
Juno Wafer™ LED Downlight Series

4" LED Ultra-Thin Wafer Switchable

WF4E SWW5 Series



Dimensions



Project:
Fixture Type:
Location:
Contact/Phone:

Product Features

The 4" round smooth wafer with 5CCT Switchable White technology provides high-quality light output and efficiency featuring a switch for easy color temperature adjustment to choose between 2700K, 3000K, 3500K, 4000K, or 5000K - while eliminating the need for recessed housings.

- Round smooth lens designed to distribute precise even illumination for general purpose areas
- Canless - No need for bulky traditional metal housings. Installs directly into drywall ceilings
- Switchable CCT gives you the flexibility to choose from 5 different settings from warm (2700K) to daylight (5000K) through the use of an integrated switch on the driver box

Applications

- Residential and light commercial applications including multi-family, hospitality, assisted living, dormitories and other multi-level construction
- Shallow slim profile allows for easy remodel or new construction insulated and drop ceiling installations
- Wet rated and airtight: perfect for showers, bathrooms, and outdoor soffits

Performance

Delivered Lumens	635
LED Color Temperature	Switchable White (27K, 30K, 35K, 40K, 50K) Default set at 3000K
CRI	90+
Voltage	Dedicated 120V
Dimming	Dimmable to 10% only with triac dimmers.

Specifications

Aperture:	3.1"
Ceiling opening:	4.25"
Overlap trim:	4.7"
Height:	0.8"



Juno Wafer™ LED Downlight Series

4" LED Ultra-Thin Wafer Switchable



ORDERING INFORMATION

Downlight

Example: WF4E SWW5 90CRI MW M6

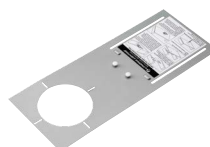
Series	Trim Style	Color Temperature	Rendering Index		Finish	
WF4E	4" Wafer-Thin LED Downlight (BLANK) Round	SWW5 Switchable White (2700K, 3000K, 3500K, 4000K, 5000K)	90CRI	90+ CRI	MW	Matte White

Accessories: Order as separate catalog number.

Series	
WF8643 PAN U	Universal New Construction Pan
WF4 PAN R12	4" new construction pan, retail pack of 12
WF4GR MW JZ	4" Goof Ring
WFJB U	Remodel Joist Bar
WFEXC6 SW3PIN FT4	3-Pin 6ft Cable
WFEXC10 SW3PIN FT4	3-Pin 10ft Cable
WFEXC20 SW3PIN FT4	3-Pin 20ft Cable



WF8643 UNIVERSAL
New Construction Pan



WF4 PAN
4" New
Construction Pan



Remodel Joist Bar



WFEXCx
3-Pin Cable

PERFORMANCE DATA

	WF4E
Input Voltage	120V
Input Power Typical	6.5W (+/-5%)
Frequency	60 Hz
EMI/RFI	FCC Title 47, Part 15 Class B (consumer)
Minimum Starting Temp	-40°F (-40°C)

Note: Actual performance may differ as a result of end-user environment and application. All values are design or typical values, measured under laboratory conditions at 25°C.

LIGHTING PERFORMANCE DATA DONNÉES SUR LE RENDEMENT DE L'ÉCLAIRAGE

Light Appearance (CCT)
Aspect de la lumière (CCT)

2700K soft white blanc doux	564 lumens 87 lumens per watt
3000K warm white blanc chaud	604 lumens 93 lumens per watt
3500K neutral white blanc neutre	635 lumens 98 lumens per watt
4000K cool white blanc froid	650 lumens 100 lumens per watt
5000K daylight blanc neutre	641 lumens 99 lumens per watt

Watts **6.5**
Color Accuracy (CRI) **90**
Précision des couleurs (CRI)



Juno Wafer™ LED Downlight Series

4" LED Ultra-Thin Wafer Switchable



Specifications

Housing

Aluminum outer frame, with steel back plate. • FT4 3-pin plenum rated cable
 • Steel spring clip for easy installation. 4" cut out template is provided to ensure a correct sized hole is cut into ceiling. Size of hole should not exceed 4 ¼ inches for this product • Can be installed from 3/8" to 1 ½" ceiling thickness • Can be removed from below the ceiling for service or replacement.

LED Light Engine

Switchable white color temperature from 2700K, 3000K, 3500K, 4000K, 5000K • 90 CRI minimum • Color accuracy within 4 step McAdams Ellipse at the end CCT (2700K and 5000K), within 6 step McAdams Ellipse in the middle CCT's (3000K, 3500K, and 4000K) • Dimming 100% to 10% with most standard incandescent dimmers (see list of approved dimmers).

Driver

Connect directly to 120V Class-2 (CAN ICES-005 (B) / NMB-005 (B)) LED driver • 120V 60 Hz constant current driver provides noise free operation
 • IC rated driver with convenience of a switch to choose between 5 selectable color temperature options ranging from 2700K (warm white), 3000K, 3500K, 4000K, or 5000K (daylight) • Isolated driver integrated inside steel remote box with three 7/8" knockouts with slots for pryout. Suitable for pulling wires with the 1.2 cubic-inch wiring compartment to accommodate up to (6) 14 gauge insulated conductors; making the Wafer LED Downlights much easier to wire in 2in/2out (plus ground) daisy-chain applications • 3" plenum space required for installation of the remote driver box.

Optical System

Edge-lit LED technology uses light guided plate to distribute light
 • Polycarbonate lens provides even illumination throughout the space
 • Efficient system that can produce over 635 lumens while using only 6.5W
 • Replaces 65W incandescent.

Life

Rated for 35,000 hours at 70% lumen maintenance output.

Labels

CSA certified to US and Canadian safety standards • ENERGY STAR® certified product • Suitable for wet location • Air-Loc certified in accordance with ASTM E283-2004 • U.S. Patent No. 10,681,784.

Testing

All reports are based on published industry procedures; field performance may differ from laboratory performance.

Warranty

3-year limited warranty. This is the only warranty provided and no other statements in this specification sheet create any warranty of any kind. All other express and implied warranties are disclaimed. Complete warranty terms located at: www.acuitybrands.com/support/warranty/terms-and-conditions

Note: Actual performance may differ as a result of end-user environment and application.

All values are design or typical values, measured under laboratory conditions at 25 °C.

Specifications subject to change without notice.



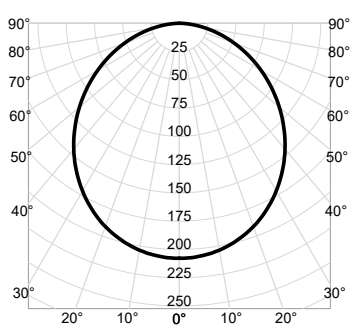
Juno Wafer™ LED Downlight Series

4" LED Ultra-Thin Wafer Switchable



Photometrics

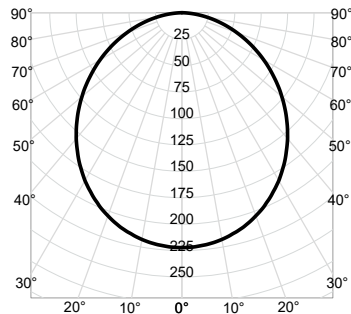
WF4E SWW5 90CRI MW M6-2700K Input Watts: 6.6, Delivered Lumens: 564, LPW: 85.5, S/MH: 1.23, Test No: RKSB240704009-10P1



CP Summary		Zonal Lumen Summary		Coefficients of Utilization								Cone of Light			Luminance (cd/sq.m)
0°	Zone	Lumens	% Fixture	pf	80%		20%		50%		Mounting Height	Initial FC Center Beam	Beam Diameter	Average Luminance	
				pc	50%	30%	10%	50%	30%	10%					
0°	0° - 30°	160	28%	0	119	119	119	116	116	116	6.0	5.8	16.3	0° 35,771	
5°	0° - 40°	259	46%	1	104	100	96	102	98	94	8.0	3.2	21.7	45° 31,794	
15°	0° - 60°	448	79%	2	91	84	78	89	83	77	10.0	2.1	27.1	55° 29,879	
25°	0° - 90°	564	100%	3	80	72	65	78	71	65	12.0	1.4	32.6	65° 27,552	
35°	90° - 180°	0	0%	4	71	62	55	69	61	55	14.0	1.1	38.0	75° 24,321	
45°	0° - 180°	564	100%	5	63	54	48	62	54	47				85° 18,061	
55°		100		6	57	48	42	56	48	42					
65°		68		7	52	43	37	51	43	37					
75°		37		8	47	39	33	47	38	33					
85°		9		9	43	35	30	43	35	30					
90°		0		10	40	32	27	40	32	27					

Beam Angle: 107.2°
Field Angle: 161.0°

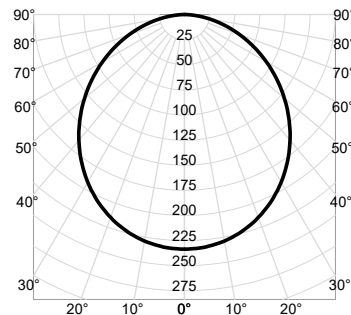
WF4E SWW5 90CRI MW M6-3000K Input Watts: 6.5, Delivered Lumens: 604, LPW: 92.9, S/MH: 1.23, Test No: RKSB240704009-11P1



CP Summary		Zonal Lumen Summary		Coefficients of Utilization								Cone of Light			Luminance (cd/sq.m)
0°	Zone	Lumens	% Fixture	pf	80%		20%		50%		Mounting Height	Initial FC Center Beam	Beam Diameter	Average Luminance	
				pc	50%	30%	10%	50%	30%	10%					
0°	0° - 30°	171	28%	0	119	119	119	116	116	116	6.0	6.2	16.3	0° 38,268	
5°	0° - 40°	277	46%	1	104	100	96	102	98	94	8.0	3.5	21.7	45° 34,054	
15°	0° - 60°	480	79%	2	91	84	78	89	83	77	10.0	2.2	27.2	55° 31,960	
25°	0° - 90°	604	100%	3	80	72	65	78	71	65	12.0	1.5	32.6	65° 29,524	
35°	90° - 180°	0	0%	4	71	62	55	69	61	55	14.0	1.1	38.1	75° 26,111	
45°	0° - 180°	604	100%	5	63	54	48	62	54	47				85° 19,444	
55°		106		6	57	48	42	56	48	41					
65°		72		7	52	43	37	51	43	37					
75°		39		8	47	39	33	47	38	33					
85°		10		9	43	35	30	43	35	30					
90°		0		10	40	32	27	40	32	27					

Beam Angle: 107.3°
Field Angle: 161.2°

WF4E SWW5 90CRI MW M6-3500K Input Watts: 6.3, Delivered Lumens: 635, LPW: 100.8, S/MH: 1.23, Test No: RKSB240704009-12P1



CP Summary		Zonal Lumen Summary		Coefficients of Utilization								Cone of Light			Luminance (cd/sq.m)
0°	Zone	Lumens	% Fixture	pf	80%		20%		50%		Mounting Height	Initial FC Center Beam	Beam Diameter	Average Luminance	
				pc	50%	30%	10%	50%	30%	10%					
0°	0° - 30°	179	28%	0	119	119	119	116	116	116	6.0	6.5	16.3	0° 40,231	
5°	0° - 40°	291	46%	1	104	100	96	102	98	94	8.0	3.7	21.8	45° 35,820	
15°	0° - 60°	505	79%	2	91	84	78	89	83	77	10.0	2.3	27.2	55° 33,647	
25°	0° - 90°	635	100%	3	80	72	65	78	71	65	12.0	1.6	32.7	65° 31,012	
35°	90° - 180°	0	0%	4	71	62	55	69	61	55	14.0	1.2	38.1	75° 27,448	
45°	0° - 180°	635	100%	5	63	54	48	62	54	47				85° 20,452	
55°		112		6	57	48	42	56	48	41					
65°		76		7	52	43	37	51	43	37					
75°		41		8	47	39	33	47	38	33					
85°		10		9	43	35	30	43	35	30					
90°		0		10	40	32	27	40	32	27					

Beam Angle: 107.4°
Field Angle: 161.2°

WF4E SWW5 90CRI MW M6-4000K Input Watts: 6.4, Delivered Lumens: 650, LPW: 101.6, S/MH: 1.23, Test No: RKSB240704009-13P1



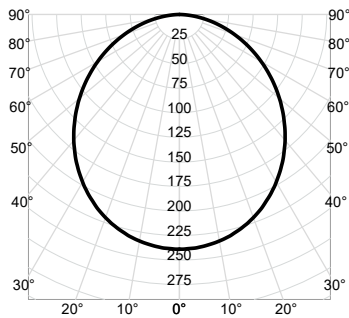
Juno Wafer™ LED Downlight Series

4" LED Ultra-Thin Wafer Switchable



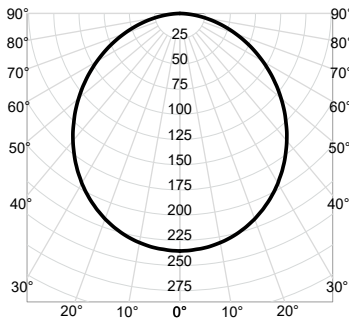
Photometrics

WF4E SWW5 90CRI MW M6-4000K Input Watts: 6.4, Delivered Lumens: 650, LPW: 101.6, S/MH: 1.23, Test No: RKSB240704009-13P1



CP Summary		Zonal Lumen Summary		Coefficients of Utilization								Cone of Light			Luminance (cd/sq.m)				
0°	Zone	Lumens	% Fixture	pf	80%		20%		50%		Mounting Height	Initial FC Center Beam	Beam Diameter	Average Luminance					
				pc	50%	30%	10%	50%	30%	10%									
0°	239	0° - 30°	184	28%	0	119	119	119	116	116	116	111	111	111	6.0	6.6	16.3	0°	41,144
5°	238	0° - 40°	298	46%	1	104	100	96	102	98	94	98	94	91	8.0	3.7	21.8	45°	36,634
15°	228	0° - 60°	516	79%	2	91	84	78	89	83	77	85	80	75	10.0	2.4	27.2	55°	34,467
25°	209	0° - 90°	650	100%	3	80	72	65	78	71	65	75	69	63	12.0	1.7	32.7	65°	31,782
35°	183	90° - 180°	0	0%	4	71	62	55	69	61	55	67	60	54	14.0	1.2	38.1	75°	28,121
45°	150	0° - 180°	650	100%	5	63	54	48	62	54	47	60	53	47				85°	20,946
55°	115				6	57	48	42	56	48	41	54	47	41					
65°	78				7	52	43	37	51	43	37	49	42	36					
75°	42				8	47	39	33	47	38	33	45	38	33					
85°	11				9	43	35	30	43	35	30	42	34	29					
90°	0				10	40	32	27	40	32	27	39	32	27					

WF4E SWW5 90CRI MW M6-5000K Input Watts: 6.6, Delivered Lumens: 641, LPW: 97.1, S/MH: 1.23, Test No: RKSB240704009-14P1



CP Summary		Zonal Lumen Summary		Coefficients of Utilization								Cone of Light			Luminance (cd/sq.m)				
0°	Zone	Lumens	% Fixture	pf	80%		20%		50%		Mounting Height	Initial FC Center Beam	Beam Diameter	Average Luminance					
				pc	50%	30%	10%	50%	30%	10%									
0°	236	0° - 30°	181	28%	0	119	119	119	116	116	116	111	111	111	6.0	6.5	16.3	0°	40,576
5°	234	0° - 40°	294	46%	1	104	100	96	102	98	94	98	94	91	8.0	3.7	21.8	45°	36,113
15°	225	0° - 60°	509	79%	2	91	84	78	89	83	77	85	80	75	10.0	2.4	27.2	55°	33,984
25°	207	0° - 90°	641	100%	3	80	72	65	78	71	65	75	69	63	12.0	1.6	32.7	65°	31,379
35°	180	90° - 180°	0	0%	4	71	62	55	69	61	55	67	60	54	14.0	1.2	38.1	75°	27,788
45°	148	0° - 180°	641	100%	5	63	54	48	62	54	47	60	53	47				85°	20,729
55°	113				6	57	48	42	56	48	41	54	47	41					
65°	77				7	52	43	37	51	43	37	49	42	36					
75°	42				8	47	39	33	47	38	33	45	38	33					
85°	10				9	43	35	30	43	35	30	42	34	29					
90°	0				10	40	32	27	40	32	27	39	32	27					