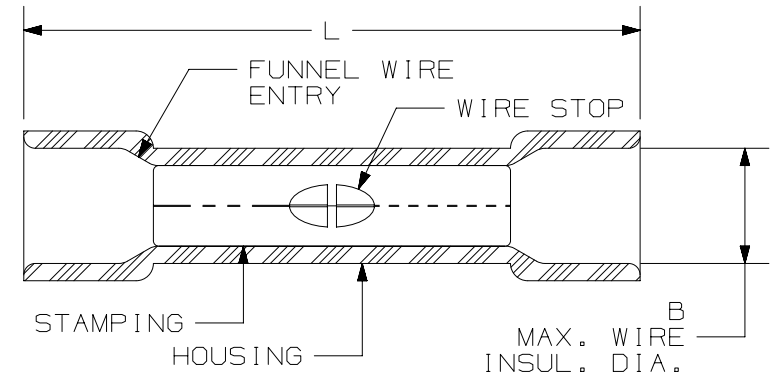


THIS COPY IS PROVIDED ON A RESTRICTED BASIS AND IS NOT TO BE USED IN ANY WAY DETRIMENTAL TO THE INTERESTS OF PANDUIT CORP.

NOTES:

- VISIT OUR ON-LINE CATALOG AT WWW.PANDUIT.COM FOR A LIST OF CURRENT PARTS APPLICABLE FOR USE WITH THIS PRODUCT.
- DIMENSIONS IN [] ARE METRIC.
- ALL MATERIALS AND COMPONENTS USED MEET THE MATERIAL RESTRICTIONS OF RoHS (EUROPEAN DIRECTIVE 2011/65/EU ON THE RESTRICTION OF HAZARDOUS SUBSTANCES) AS PROPOSED BY THE RoHS TECHNICAL ADAPTATION COMMITTEE.
- USED FOR:
 - SOLID OR STRANDED COPPER WIRE
 - 221°F [105°C] MAX. OPERATING TEMPERATURE
 - 600 V. MAX. VOLTGE RATING (UNLESS NOTED OTHERWISE)
- INSTALLATION TOOLS:
 - #22-16 AWG [0,5-1,0 mm²] STRANDED AND SOLID WIRE: CT-100A, CT-160, CT-250, CT-400, CT-500, CT-550, CT-1550, CT-2300, CT-2500 (CT-2550CH), CT-2400 (CT-450CHA, CT-2455CH, CT-2455CHA),
 - #22-18 AWG [0,5-1,5 mm²] STRANDED AND SOLID WIRE: CT-100, CT-2300 (CD-550)
 - #18-14 AWG [1,5-2,5 mm²] STRANDED AND SOLID WIRE: CT-250, CT-500, CT-550, CT-1550, CT-1551, CT-2300, CT-2400 (CT-450CHA, CT-2455CH, CT-2455CHA), CT-2500 (CT-2550CH)
 - #16-14 AWG [1,0-2,5 mm²] STRANDED AND SOLID WIRE: CT-100, CT-2300 (CD-550)
 - #14-10 AWG [2,5 -6,0 mm²] STRANDED AND SOLID WIRE: CT-250, CT-500, CT-550, CT-1550, CT-2300, CT-1551, CT-2400 (CT-2450CHA, CT-2455CH, CT-2455CHA), CT-2500, (CT-2550CH)
 - #12-10 [4,0-6,0mm²] STRANDED AND SOLID WIRE: CT-100 / CT-100A TOOLS [300 V. MAX. VOLTAGE]
- WIRE STRIP LENGTH: 5/16" ^{+1/32}₀ [7,9^{+0,8}₀]
- MATERIAL:
 - STAMPING (#22-18 & #16-14): 0.03" [0,8] THK COPPER, TIN PLATED
 - STAMPING (#12-10): 0.04" [1,0] THK COPPER, TIN PLATED
 - HOUSING: VINYL
- SEE www.panduit.com FOR PACKAGE QUANTITIES INDICATED BY PART NUMBER SUFFIX



PANDUIT PART # (MARKED WIRE SIZES)	SUPPORTED TOOLS	SUPPORTED WIRE SIZES		COLOR	DIMENSIONS in. [mm]	
		ENGLISH AWG	METRIC mm ²		L ± .03 [0,8]	B ± .01 [0,3]
BSV18X (#22-18)	SEE NOTES 5.A. & 5.B.	#22-16	0,5-1,0	RED	1.03 [26,2]	.17 [4,3]
BSV14X (#16-14)	SEE NOTES 5.C. & 5.D.	#18-14	1,0-2,5	BLUE	1.04 [26,4]	.20 [5,1]
BSV10X (#12-10)	SEE NOTES 5.E. & 5.F.	#14-10	2,5-6,0	YELLOW	1.18 [30,0]	.25 [6,4]



LISTED
587H
E52164



CERTIFIED
LR31212

PART NUMBER		SEE TABLE	
TITLE			
BUTT SPLICES, EXPANDED VINYL INSULATED			
CUSTOMER DRAWING			
ITEM REVISION NAME		N41181BB/10	
DATASET FILE NAME		N41181BB_DC/10A	
MATERIAL		SEE NOTE 5	
DRAWING NUMBER		A41181	
DRAWN BY	DATE	CHK	SCALE
FES	-	-	NONE
SHEET 1 OF 1		A	

REV	DATE	BY	CHK	APR	DESCRIPTION	ECN
10A	10/10/24	MRWA	BYA	JSUN	C. UPDATED WIRE RANGES OF ALL PART NUMBERS IN PART TABLE & NOTE 5 B. UPDATED NOTES TO MAKE TOOL & VOLTAGE COMPATIBILITY CLEARER A. UPDATED DRAWING TO CURRENT STANDARDS	N41181BB/10
09	9/20/12	JBN	LCA	VMB	INITIAL RELEASE	A41181

A-SIZE CUSTOMER