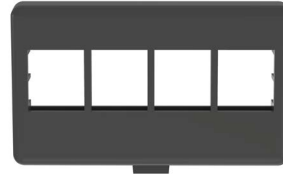


NetKey™ Modular Furniture Faceplates – Standard Openings

SPECIFICATIONS

Modular furniture faceplates shall be available in 4-port and shall have a flat design with and without labeling. Faceplate shall mount to standard furniture openings and shall accept any NetKey Keystone module.



TECHNICAL INFORMATION

Mounting options: Standard sizes have industry standard opening 1.35 in. – 1.41 in. (H) x 2.67 in. – 2.75 in. (W) (34.16mm – 35.69mm (H) x 67.82mm x 69.85mm (W)), maximum panel thickness of 0.09 in.

KEY FEATURES AND BENEFITS

Modular flat design: Accepts all NetKey modules, which snap in and out for easy moves, adds and changes

Bend radius control: Bend radius can be protected or improved by using faceplate extender which will add 0.05 in. (1.27mm) to the in-wall depth

Identification: Select faceplate includes label pockets with label and label covers for easy identification; optional adhesive labels available

APPLICATIONS

Furniture faceplates are used in work areas with modular furniture which have the standard furniture outlet opening. Faceplate extender can be used to increase the space behind the furniture faceplate by 0.5 in. (1.27mm).

NetKey Modular Furniture Faceplates (for standard openings)

Four module space: NK4MF*

Four module space with labels: NK4MFLBL

Label options for four module space faceplate

Laser/Inkjet with adhesive: C252X030FJJ

Laser/Inkjet, non-adhesive: C261X035Y1J

Accessories

Modular furniture faceplate extender: MFFPEBL

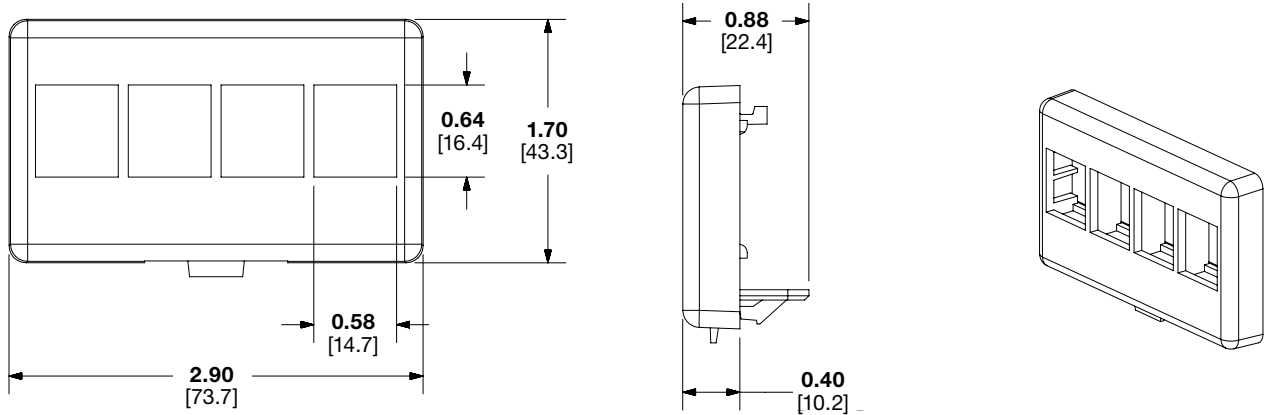
Replacement labels and label covers: C4PPLK

*Colors: BL (Black) with IW (Off White), WH (White), or IG (International Gray)

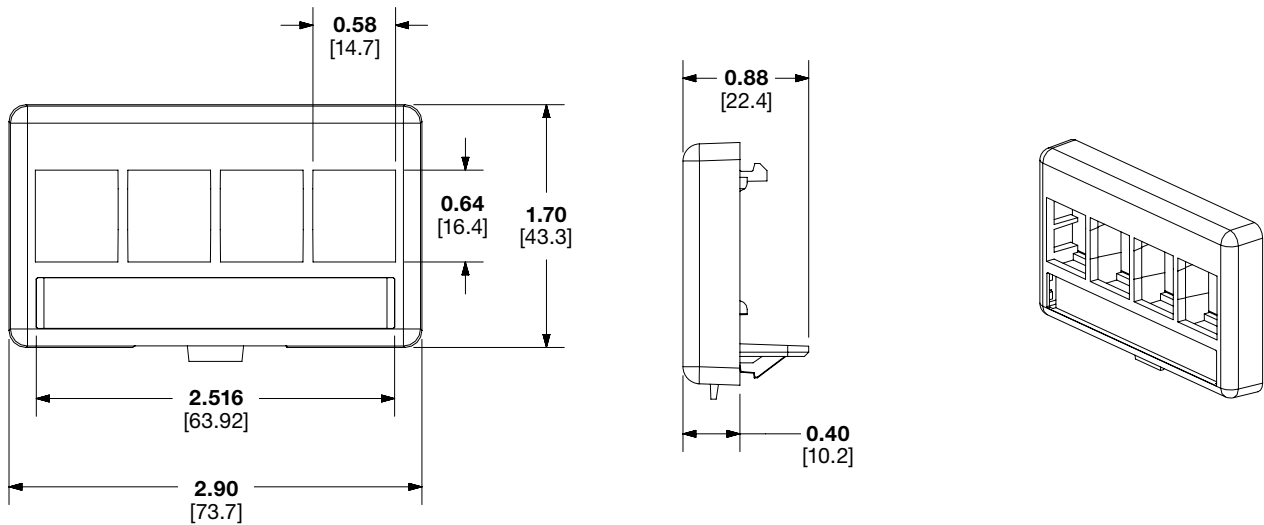
NetKey™ Modular Furniture Faceplates – Standard Openings

ENGINEERING DRAWINGS

NK4MFBL



NK4MFLBL



Dimensions are in inches. [Dimensions in brackets are metric].

WORLDWIDE SUBSIDIARIES AND SALES OFFICES

PANDUIT US/CANADA
Phone: 800.777.3300

PANDUIT EUROPE LTD.
London, UK
Phone: 44.20.8601.7200

PANDUIT SINGAPORE PTE. LTD.
Republic of Singapore
Phone: 65.6305.7575

PANDUIT JAPAN
Tokyo, Japan
Phone: 81.3.6863.6000

PANDUIT LATIN AMERICA
Guadalajara, Mexico
Phone: 52.33.3777.6000

PANDUIT AUSTRALIA PTY. LTD.
Victoria, Australia
Phone: 61.3.9794.9020

For a copy of Panduit product warranties, log on to www.panduit.com/warranty

PANDUIT®

For more information
Visit us at www.panduit.com
Contact Customer Service by email: cs@panduit.com
or by phone: 800.777.3300

© 2024 Panduit Corp.
ALL RIGHTS RESERVED.
COSP645-WW-ENG
12/2024