

Project: _____ Type: _____
 Drawn by: _____ Catalogue #: _____ Date: _____

Individual Spec Sheet

LPDL™

LED REGRESSED DOWNLIGHT

4" 5 CCT Selectable

ORDERING INFORMATION

Order code: 70026
Model number: LPDL4R/RG-9A-5CWH
UPC: 069549031692
Case quantity: 24

PHYSICAL DATA

Size in (cm): 4 3/4 x 7/8 (12 x 2.2)
Shape: Round
Finish: White
Lens Type: Frosted polycarbonate
Mounting: Recessed

PERFORMANCE DATA

Watts (W): 9
Volts (V AC): 120
Color temperature (K):¹ 2 700/3 000/3 500/4 000/5 000
Lumen output (lm):² 750
Efficacy (lm/W): 83.3
CRI: 90+
Life L70 (h):³ 50 000
Beam angle (°) 110
Environment Wet location
THD (%): <20
Power factor: >0.9
Cable rating: FT4
Frequency (Hz): 60
Operating temp. range: -30 °C to 45 °C (-22 F° to 113 °F)
Dimmable: Phase cut (ELV / Triac)

¹ Typical color temperature range: +/- 5 %.

² Lumen values are derived from Energy Star reported data. Initial lumens range: +/- 10 %.

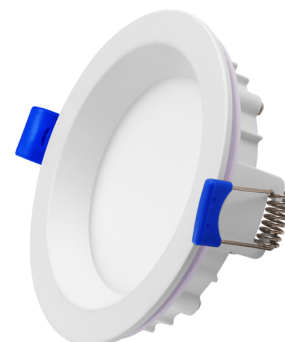
³ Life hours are derived from IESNA LM-80 testing report and projected per IESNA TM-21 extrapolations.

LUMEN SPECIFICATION TABLE

Watts (W)	2 700 K		3 000 K		3 500 K		4 000 K		5 000 K	
	Lumen output (lm)	Efficacy (lm/W)	Lumen output (lm)	Efficacy (lm/W)	Lumen output (lm)	Efficacy (lm/W)	Lumen output (lm)	Efficacy (lm/W)	Lumen output (lm)	Efficacy (lm/W)
9	721	80	737	82	769	85	777	86	780	87

DEFAULT PROGRAMMING

2 700 K



This lighting equipment meets requirements of ICES-005 issue 5 class B for use in residential applications.
 Data is based upon tests performed in a controlled environment.
 Actual performance can vary depending on operating conditions. Specifications are subject to change without notice.

ACCESSORIES (order separately)

Order code	Model number	Type
66821 ¹	ACC/MPLATE/4.25IN/HANG.BARS/STD	Mounting plate with hanger bars
66058	ACC/MPLATE/4.25/ADJ/STD	Adjustable mounting plate
66051	ACC/MPLATE/4.25/SQR/STD	Square mounting plate
66143	ACC/4/VAPOR BARRIER/STD	Vapor barrier extender
68986	GOOF RING-4.25IN	Goof rings
64264 ²	LPDL/ACC/6FT/EXTCABLE/STD	6' extension cord

¹ Includes brackets and screws.

² Up to 6 FT4 extension cords can be connected together.

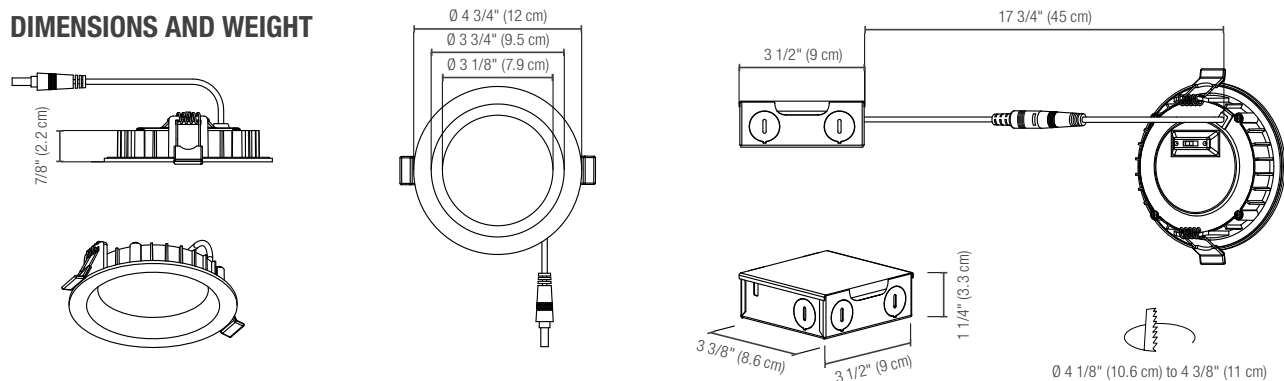
COMPATIBLE DIMMERS¹

Brand	Model
Legrand	RH730PTUTC
Cooper	AAL06, DAL06P, SAL06P3
Leviton	6615, 6674, DDMX1, DSL06-1LZ, DSM10-1LZ, IPE04-1LZ, IPL06
Lutron	AYCL-253P, CTCL-153P, DVCL-153P, DVCL-253P, DVELV-300P, HCL453P, MACL-153P, PD-6WCL, SELV-300P

1 This table shows dimmers that have been tested and have demonstrated proper operation under normal conditions. Each installation being unique, various factors such as load, common neutrals or other electrical products on the circuit can, in certain instances, cause variance in system performance. Read and comply to the dimmer installation instructions. Consult dimming system manufacturer for additional support in operation. Some dimmers may require more than one product for stable operation. Stanpro recommends to use dimmers designed to work with LED products. Older dimmers designed for incandescent products may cause erratic operation.

Dimming range: 10%-100%

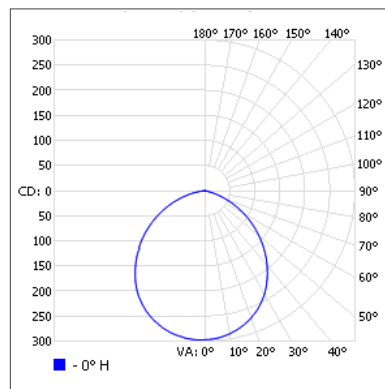
DIMENSIONS AND WEIGHT



PHOTOMETRIC DATA¹

70026 • LPDL4R-RG-9A-5CWH • 3 000 K • 737.2 lm

Polar candela distribution



Zonal lumen summary

Zone	Lumens	% Fixture
0-30	229.1	31.1
0-40	370.8	50.3
0-60	626.0	84.9
60-90	111.2	15.1
0-90	737.2	100.0

Illuminance at a distance

Center beam fc		Beam width	
1.7'	103	4.3'	4.3'
3.3'	27.3	8.3'	8.3'
5.0'	11.9	12.5'	12.5'
6.7'	6.62	16.8'	16.8'
8.3'	4.31	20.8'	20.8'
10.0'	2.97	25.1'	25.1'

■ Vert. spread: 102.9°
■ Horiz. spread: 102.9°

¹ Complete IES files available on our website.

Qty	Description	Price

I accept the specifications of the luminaire configuration mentioned above.

Name:

Company:

Signature:

Date:

Data is based upon tests performed in a controlled environment. Actual performance can vary depending on operating conditions. All products are subject to change or may be discontinued any time without notice. Please contact your Stanpro customer service representative to confirm inventory levels at time of order.