

Project : _____ Type : _____
 Drawn by : _____ Catalogue # : _____ Date : _____

Individual Spec Sheet

L2STX

SMART LED STRIP

Integrated Bluetooth® Mesh Technology & PIR Motion Sensor

ORDERING INFORMATION

Order code: 69706
Model number: L2STX-96LP90-Q/TW-BTS
UPC: 069549029279
Case quantity: 1
DLC unique ID: S-FSORTI¹ (DLC Premium) / S-VBALNW² & S-6LFDPP³ (DLC Standard)

PHYSICAL DATA

Length in. (cm): 94 1/4 (239.34)
Lens material: Frosted PMMA
Housing material: 24 gauge semi-gloss white powder painted steel
Mounting: Surface, suspended or row mounted (V-Hooks and junction box cover included)
Sensor: Integrated PIR motion sensor

PERFORMANCE DATA

Watts: Power Selectable Up to 90 W
Volts (V AC): 120-347
Color temperature¹: Tunable White - 3 000 K to 5 000 K
Lumen output (lm)²: 12 420
Efficacy (lm/W): 138
CRI: 80+
Life L70 (hrs)³: 156 000
Tested LM-80 (hrs)³: 10 000
Dimming: Wireless Bluetooth® Dimming (1 % - 100 %)
Power factor: 0.90
THD (%): 10
Frequency (Hz): 50/60
Surge protection (kV): 2.5
Input current (A): 0.75-0.259
Operating temp. range: -20 °C to 50 °C (-4 °F to 122 °F)

¹ Typical color temperature range: +/- 5 %.

² Lumen values are derived from DLC reported data at 5 000 K. Please refer to the LUMEN SPECIFICATION TABLE for more details on other color temperatures.

³ Life hours are derived from IESNA LM-80 testing report and projected per IESNA TM-21 extrapolations.

LUMEN SPECIFICATION TABLE

Watts (W)	3 000 K		3 500 K		4 000 K		5 000 K	
	Lumen output (lm)	Efficacy (lm/W)	Lumen output (lm)	Efficacy (lm/W)	Lumen output (lm)	Efficacy (lm/W)	Lumen output (lm)	Efficacy (lm/W)
90	11 700	130	11 880	132	12 150	135	12 420	138

DEFAULT PROGRAMMING

90 W / 5 000 K

This lighting equipment meets requirements of ICES-005 issue 5 class A for use in commercial applications.
 Data is based upon tests performed in a controlled environment.
 Actual performance can vary depending on operating conditions. Specifications are subject to change without notice.



Not all products are qualified on the DLC QPL.
 To view our DLC qualified products, please consult the DLC Qualified Products List at www.designlights.org/search.

¹ Stairwell And Passageway Luminaires

² Direct Linear Ambient Luminaires

³ High-Bay Luminaires for Commercial and Industrial Buildings

ACCESSORIES (order separately)

Order code	Type
68676	Suspension kit - 2 chains (1 m)
70218	10' Complete aircraft cable kit with 5-wire power feed and 2 canopies
70282	10' Single side aircraft cable with canopy (non-power feed)
69405	Continuous row mounting connector
69413	Wire guard kit 48" ^{1,2}
69707	Replacement lens 96" (with sensor)

¹ For 96" luminaires, order 2 units.

² When installed on the luminaires with integrated PIR motion sensor, the wire guard will reduce the sensor sensitivity.

INCLUDED IN THE BOX

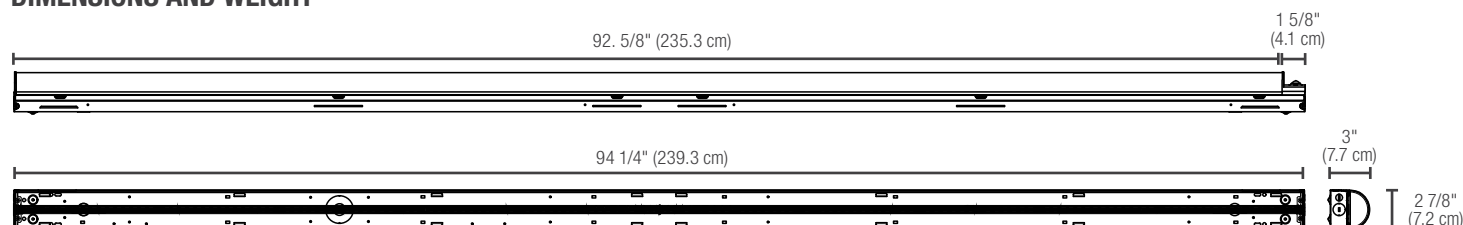


V-Hooks



Canopy Plate for Junction Box

DIMENSIONS AND WEIGHT



Net weight (lbs)	8.5
------------------	-----

SENSOR SETTINGS OPTIONS¹

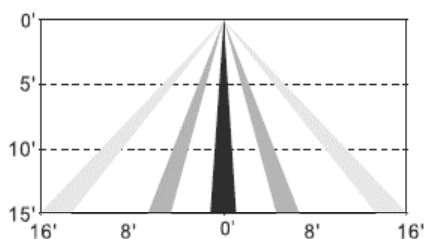
Parameter	Settings Options
1st Time Delay	1 min - 59 min, ∞
2nd Time Delay	1 min - 59 min, ∞
Dim Level	1 % - 100 %

¹ For detailed sensor programming and settings information, please refer to the Genio App Instruction Guide.

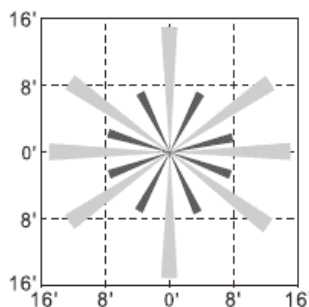
SENSOR MOUNTING AND DETECTION RANGE

Mounting Height	15 ft (4.6 m) Max
Detection Range	32 ft (9.75 m) Max

SIDE VIEW



TOP VIEW

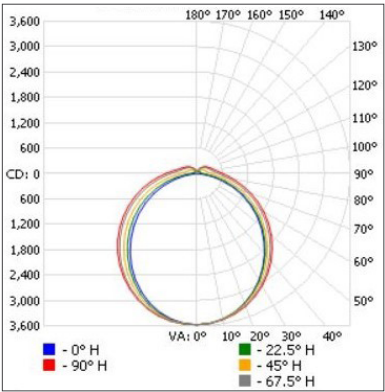


Data is based upon tests performed in a controlled environment. Actual performance can vary depending on operating conditions. All products are subject to change or may be discontinued any time without notice. Please contact your Stanpro customer service representative to confirm inventory levels at time of order.

PHOTOMETRIC DATA¹

69706 • L2STX-96LP90-Q/TW-BTS • 90 W • 4 000 K • 12 140.6 lm

Polar candela distribution



Zonal lumen summary

Zone	Lumens	% Fixture
0-30	2 765.3	22.8
0-40	4 529.2	37.3
0-60	8 094.5	66.7
60-90	2 931.6	24.1
70-100	1 854.8	15.3
90-120	753.6	6.2
0-90	11 026.1	90.8
90-180	1 114.4	9.2
0-180	12 140.6	100

Illuminance at a distance

Center beam fc		Beam width	
1.7'	1 236	4.6'	6.6'
3.3'	328	8.9'	12.8'
5.0'	143	13.4'	19.4'
6.7'	79.6	18.0'	26.0'
8.3'	51.8	22.3'	32.2'
10.0'	35.7	26.8'	38.8'
Vert. spread: 106.6°			
Horiz. spread: 125.4°			

¹ Complete IES files available on our website.

Qty	Description	Price

I accept the specifications of the luminaire configuration mentioned above.

Name: _____
Company: _____
Signature: _____

Date: _____

Data is based upon tests performed in a controlled environment. Actual performance can vary depending on operating conditions. All products are subject to change or may be discontinued any time without notice. Please contact your Stanpro customer service representative to confirm inventory levels at time of order.

GENIO CONTROL SYSTEM FEATURES

Genio is Stanpro's smart brand of lighting and emergency lighting. Integrating the latest in Bluetooth® Mesh technology, Genio products allow for customizable features that can be adjusted at your fingertips using a smartphone or other compatible devices. This system is easy to use, versatile and futureproof! Please see below for some of the key features¹ of the Genio control system:



LIGHTS

Instantly control the color temperature, wattage, lumen output and dimming.



GROUPS

Easily group luminaires together and control them as a single unit.



SCENES

Customize your lighting through scenes and create different atmospheres for occasions and activities.



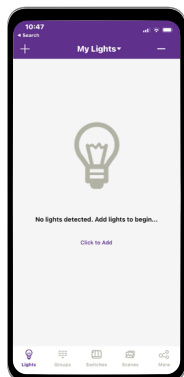
SCHEDULES

Set schedules to specify dates, times and recurrence patterns for changing the settings of your lighting.



SENSOR

Adjust the integrated PIR motion sensor and daylight harvesting settings.



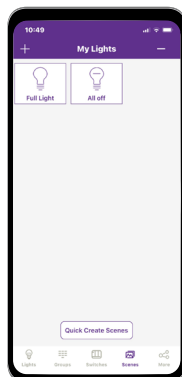
Lights

- Add
- Name or Rename
- Dimming and Color Tuning
- Delete
- Sensor Settings



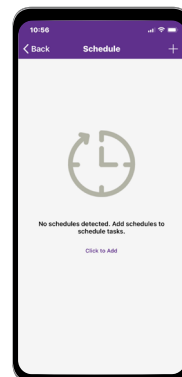
Groups

- Create
- Rename
- Delete
- Add or Remove Lights
- Adjust Group Linkage Level
- Turn On/Off
- Adjust Group Dimming
- Activate Auto Mode



Scenes

- Create
- Edit
- Delete



Schedules

- Creating
- Associate a Schedule To Lights, Groups, or Scenes
- Set a Repeating
- Set Fade Time
- Delete
- Enable Or Disable



Download on the
App Store

GET IT ON
Google Play



Download our App
Instruction Guide

¹ Please note that the features mentioned are part of a broader range of characteristics relating to the Genio Ecosystem and may not be applicable to this specific product. Customers are advised to review the product specifications carefully to understand their capabilities.

The Bluetooth® word mark and logos are owned by the Bluetooth SIG, Inc. and any use of such marks by Ascot Capital Group is under license. Other trademarks and trade names are those of their respective owners.