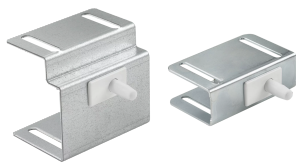


REMOTE DOOR SWITCH FOR PROLINE, 120/250VAC 10AMP, GALVANIZED, STEEL

CATALOG NUMBER

PLFSWD



The Remote Door Switch can activate a light or other electrical component when the enclosure door is opened.

INDUSTRY STANDARDS

UL508A Recognized, Type 3R, 4, 4X, 12; File E61997

cUL Recognized per CSA C22.2 No. 14-13; Type 3R, 4, 4X, 12; File E61997

FEATURES

Mounts on enclosure frame and includes mounting hardware

Mounting plate is 14 gauge

PRODUCT ATTRIBUTES

Article Number: 26949

Height: 1.26in

Width: 0.67in

Depth: 0.87in

Material: Mild Steel

Finish: Galvanized

Color: Unpainted

Thickness: 14ga

Weight: 0.38lb

WARNING

nVent products shall be installed and used only as indicated in nVent's product instruction sheets and training materials. Instruction sheets are available at www.nvent.com and from your nVent customer service representative. Improper installation, misuse, misapplication or other failure to completely follow nVent's instructions and warnings may cause product malfunction, property damage, serious bodily injury and death and/or void your warranty.



Our powerful portfolio of brands:
nVent.com CADDY ERICO HOFFMAN RAYCHEM SCHROFF
TRACER