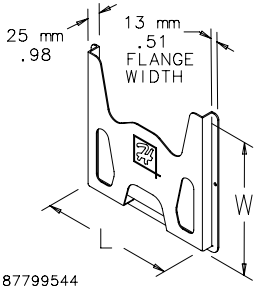


DATA POCKETS



Provides a convenient place to store wiring diagrams, operation manuals and other documentation inside the enclosure. Adhesive-backed pockets mount inside the solid enclosure cover. Mounting hardware included. Thermoplastic pockets are black and have cut-away areas for easy inspection of contents.

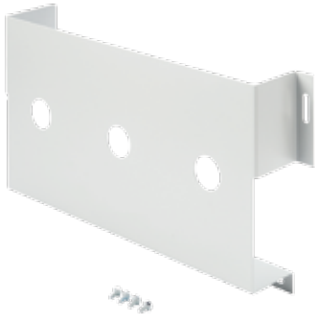
BULLETIN: A80DP



Catalog Number	Description	L in./mm	W in./mm
ADP1	Small pocket	6.00 152	6.00 152
ADP2	Large pocket	12.00 305	12.00 305

Use ADP2 when A = 24 and B = 30

STEEL DATA POCKET



APPLICATION

Provides a convenient place to store wiring diagrams, operation manuals and other documentation inside the enclosure.

SPECIFICATIONS

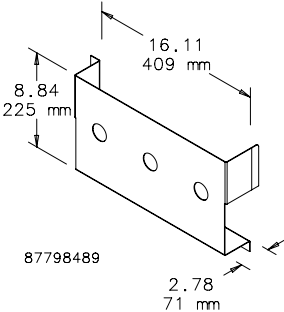
- Steel Data Pocket fastens to the bottom of the door
- Door Bar Grid Straps (purchased separately) must be used to change the vertical mounting position of the data pocket

FINISH

- Polyester powder paint; RAL 7035 textured light gray standard
- Custom colors available

BULLETIN: P40

Catalog Number	Description
P2ADPS1	Steel Data Pocket



FOLDING SHELF



APPLICATION

The folding shelf can be used on the exterior or the interior of a door to provide a convenient surface for computers, tools or paperwork.

SPECIFICATIONS

- Mounts to door using Door Bar Grid Straps (sold separately)
- Locks in two positions - 90 degrees as a shelf and 15 degrees as a writing surface.
- Holds up to 30lb (13.6kg)
- 16 gauge steel with 12 gauge brackets

FINISH

- Polyester powder paint; RAL 7035 textured light gray standard
- Custom colors available

BULLETIN: P20

Catalog Number	Description
PSHDM	Fits door widths 600, 700, 800 and 1000 mm