



Part Number : [1301410015](#)

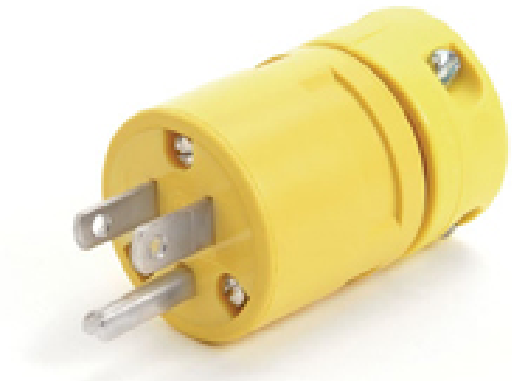
Product Description : Super-Safeway Plug, 2 Pole/3 Wire, NEMA 5-15, 125V

Series Number : 130141

Status : Active

Product Category : Wiring Devices

Engineering Number : 1447



---

## Documents & Resources


### Drawings

[1301410015\\_sd.pdf](#)

---

## Product Environment Compliance

### Compliance

GADSL/IMDS	Not Relevant
China RoHS	
EU ELV	Not Relevant
Low-Halogen Status	Not Low-Halogen per IEC 61249-2-21
REACH SVHC	Contains Lead per D(2023)3788-DC (14 Jun 2023)
EU RoHS	Compliant with Exemption 6(c) per EU 2015/863

### Multiple Part Product Compliance Statements

- Eu RoHS
- REACH SVHC
- Low-Halogen

### Multiple Part Industry Compliance Documents

- IPC 1752A Class C
- IPC 1752A Class D
- Molex Product Compliance Declaration
- IEC-62474

## Part Details

### General

Status	Active
Category	Wiring Devices
Series	130141
Description	Super-Safeway Plug, 2 Pole/3 Wire, NEMA 5-15, 125V
IP Rating	N/A
NEMA Configuration	NEMA 5-15
Product Name	Super-Safeway
Specialty	N/A
Type	Plug
UPC	78678870102

### Agency

CSA	LR6837
UL	E10176

### Electrical

Current - Maximum per Contact	15.0A
GFCI	No
Voltage - Maximum	125V

### Physical

Cord Type	N/A
Flange	No
Flip Lid	No
Gender	Male
Length	N/A
Lighted Connector	No
Locking Blade	No
Net Weight	81.646/g

Poles	2-pole/3-wire
Receptacle Type	N/A

---

---

This document was generated on Jan 21, 2025