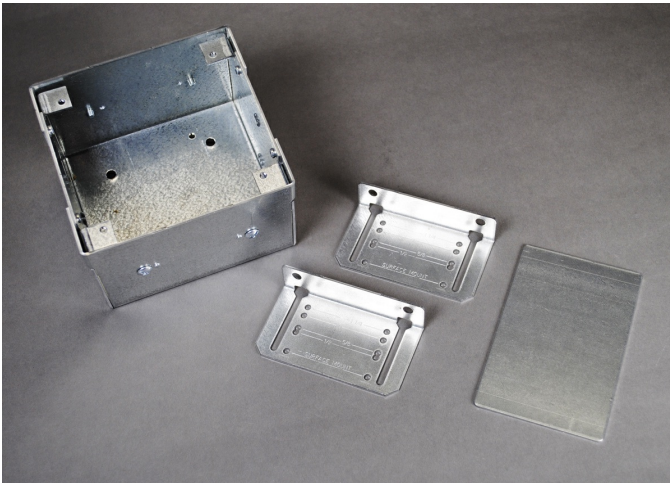




Wiremold
2 GANG WALL SOURCE BOX C/W NECESSARY BRACKETS
Part No. WSB42-2C



Wiremold® WallSource Multiple Service Boxes provide power and communications connectivity through a single access point in the wall. Keeping up with technology advancements is a breeze! By using 5507 Series Faceplates, WallSource Multiple Service Boxes can accommodate a wide range of power, communication, and A/V solutions. WallSource Boxes quickly mount in walls with standard 16" [406mm] on center studs. Adjustable mounting brackets offer the flexibility to flush mount WallSource Boxes within multiple wall thicknesses. Knockouts located in both the top and bottom of WallSource Boxes provide easy access for a variety of power, communication, and A/V services. Easy-to-install slide-in dividers provide separation for power and communication or A/V wiring.

Features & Benefits

Slide-in dividers separate the box for power and communication services. Ordering Data: 4 3/4" L x 5" W x 3 1/4" D
Adjustable mounting brackets offer flexibility to flush mount box in 1/2", 5/8", 1", (121mm L x 127mm W x 83mm D), 2-Gang, 1/2", 3/4", and 1" trade size KOs.
and 1 1/4" (12.7mm, 15.9mm, 25mm, and 32mm) wall thicknesses.

NOTE: Certified to Canadian Safety Standards, for sale in Canada. When ordering, add "C" suffix to part number to denote the Canadian version, i.e., "WSB42-2C".

Specifications

General Info

Product Line	Wiremold	UPC Number	786776563795
Country Of Origin	United States		

Listing Agencies / 3rd Party Agencies

cULus ListingNumber	E2961	cULus Listed	Yes
---------------------	-------	--------------	-----

Additional Information

RoHS Compliant	Yes
----------------	-----