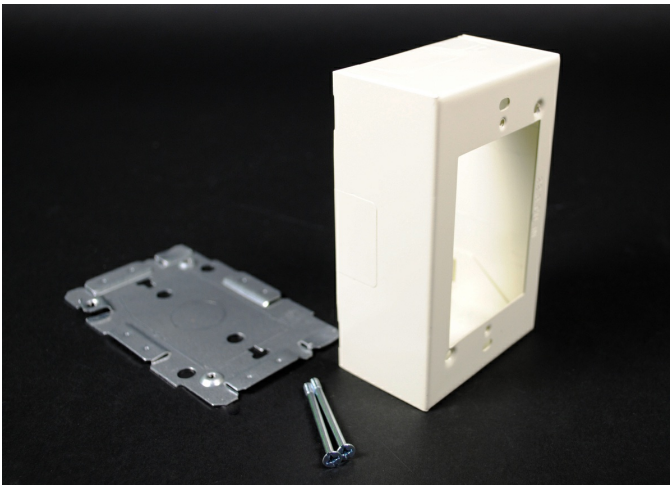




Wiremold
STL SWT & RECPT BOX 2000 IVORY
Part No. CV2048



Plugmold® Multioutlet Systems are available in a wide variety of lengths and fittings and in a variety of finishes to provide versatile solutions for many applications. Plugmold options include single or alternating circuits, standard or isolated ground receptacles, GFCI protection, tamper-resistant protection, USB charging, Snapicoil® harnesses of prewired receptacles, and cord-ended units. Plugmold® Multioutlet Systems are available in black or ivory ScuffCoat™ finish, painted white or gray enamel steel, stylish stainless steel, anodized aluminum and durable textured ivory nonmetallic. The painted steel product works with many types of decor and is paintable to integrate with most color schemes. Durable stainless steel and anodized aluminum Plugmold products are corrosion-resistant, making them ideal for labs.

Features & Benefits

Cover has twistouts for 2000, 500, and 700 Series Raceway. Base has 1/2" trade size KO and rectangular KO for extension to wall box. Base has #10 threaded hole for ground connection.

Specifications

General Info

Product Line	Wiremold	UPC Number	786776548402
Country Of Origin	United States		

Listing Agencies / 3rd Party Agencies

cULus ListingNumber	E41751	cULus Listed	Yes
---------------------	--------	--------------	-----

Trade Programs

USMCA	Yes
-------	-----

Additional Information

RoHS Compliant	Yes
----------------	-----