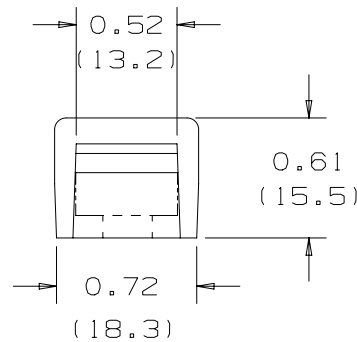
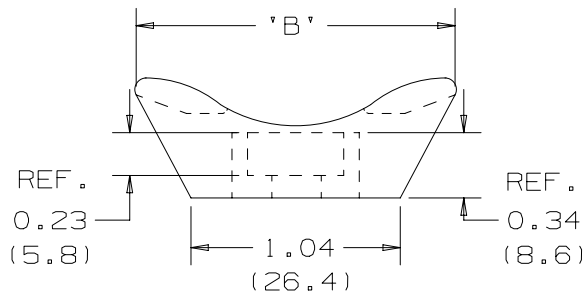
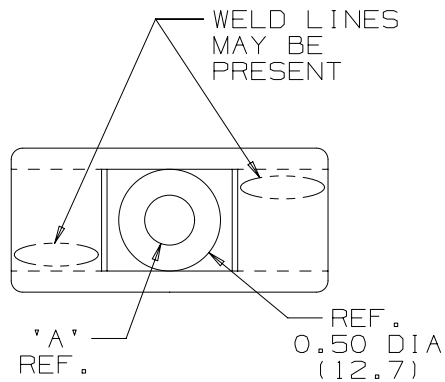


THIS COPY IS PROVIDED ON A RESTRICTED BASIS AND IS NOT TO BE USED IN ANY WAY DETRIMENTAL TO THE INTERESTS OF PANDUIT CORP.



PANDUIT PART NUMBER*	*MATERIAL SUFFIX	'A' DIA.	'B'	MTG. SCREW	WEIGHT lbs/100 pcs (g)/100 pcs	USE WITH ANY OF THESE CABLE TIES
TMEH-S8	-0	0.18 (4.6)	1.62 (41.1)	#8 (M4)	1.04 (471.4)	I, S, H, EH
TMEH-S10	-0	0.20 (5.1)	1.62 (41.1)	#10 (M5)	1.03 (467.4)	I, S, H, EH
	-100 -109		1.65 (41.9)			
TMEH-S25	-0	0.26 (6.6)	1.62 (41.1)	1/4" (M6)	1.01 (458.0)	I, S, H, EH

*MATERIAL SUFFIX	MATERIAL
-0	WEATHER RESISTANT NYLON
-100	WEATHER RESISTANT POLYPROPYLENE
-109	POLYPROPYLENE

NOTES:

- SEE CURRENT PRICE SHEET FOR PART NUMBER SUFFIX DESIGNATION FOR PACKAGE SIZE.
- CABLE TIE CROSS SECTION CODE:  
I=INTERMEDIATE, S=STANDARD  
H=HEAVY DUTY, EH=EXTRA HEAVY.

DIMENSIONS IN BRACKETS ARE METRIC [ mm ]

CAD FILENAME/LAYERS

G03597JX\_DC/03A - GB0239EL r03A

**PANDUIT**

CORP.

TINLEY PARK, ILLINOIS

TMEH-XX  
TIE MOUNT

03A	05-25-25	BDK	JADE	ADDED WELD LINE NOTATION TO TOP VIEW	011256	00	DJSL		
2	10/28/03	MSAD		ADDED SEPERATE TMEH-S10 ROW FOR -100 AND -109 PARTS; 0.50 (12.7) DIA WAS .52 (13.2), 'B' WAS 1.65 (41.9) FOR -0 PARTS, 0.72 (18.3) WAS .74 (18.8) 1.04 (26.4) WAS 1.05 (26.7)	GB0239EL	2			
1	7/24/01	LGG		ADDED REF & UPDATED	GB0239EL	1			
R	12/13/96	AJV		INITIAL RELEASE	GB0239EL	R			
REV	DATE	BY	CHK	DESCRIPTION	ECN	- R	APP		

UNLESS OTHERWISE SPECIFIED,  
DIMENSIONAL TOLERANCES ARE:  
(.X) ±0.05 (1.3) (.XXX) ±0.010 (0.25)  
(.XX) ±0.02 (0.5) ANGLES ±5°

UNLESS OTHERWISE SPECIFIED,  
ALL DIMENSIONS ARE GIVEN  
IN INCHES, THIRD ANGLE PROJECTION.

DRAWN BY

AJV

MAT'L:

DATE

12/13/96

SEE TABLE

CHK'D

SCALE NONE

DRAWING NO.

GB0239EL

DWG  
A  
SIZE