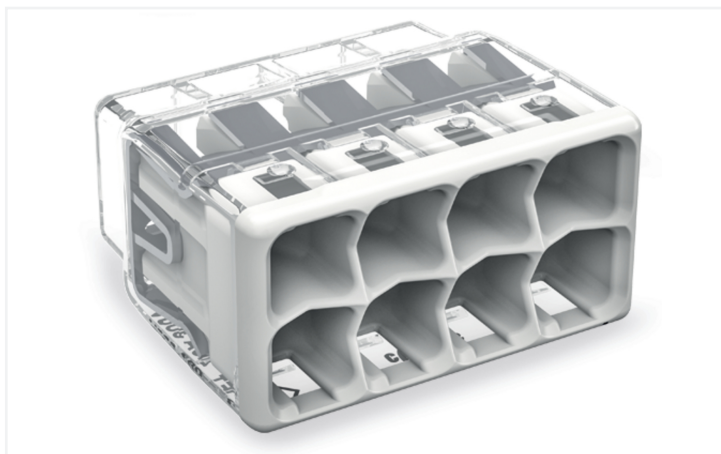


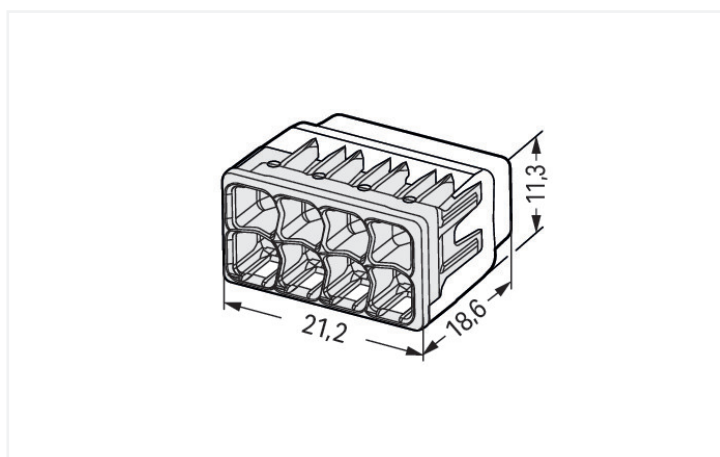
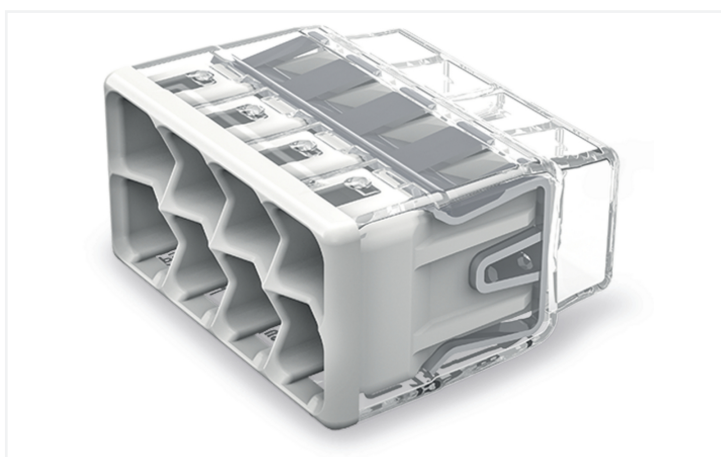
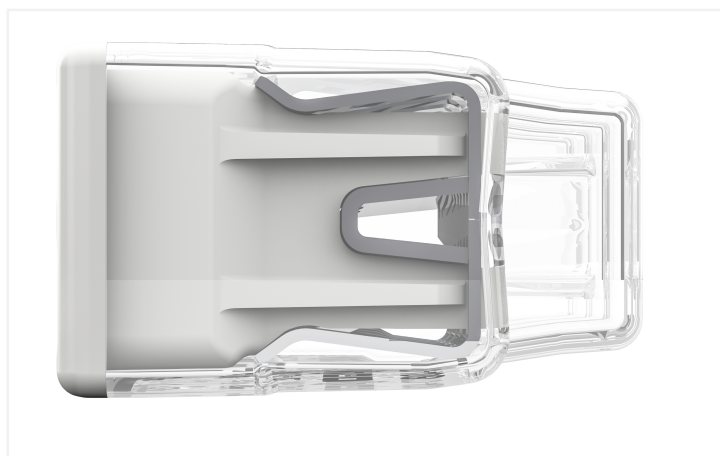
## Data Sheet | Item Number: 2773-408

PUSH WIRE® splicing connector; for solid and stranded conductors; max. 4 mm<sup>2</sup>; 8-conductor; transparent housing; light gray cover; Surrounding air temperature: max 85°C (T85); 4,00 mm<sup>2</sup>; transparent

<https://www.wago.com/2773-408>



Color: ☐ transparent



Dimensions in mm

Push wire® splicing connector, 2773 Series, PUSH WIRE®

Push wire® splicing connector (item number 2773-408) simplifies electrical installations. This series of PUSH WIRE® connectors ensures safe and quick connections in both surface-mounted and flush-mounted junction boxes in any building, regardless of installation complexity. This splicing connector has a rated voltage of 450 V and can handle currents up to 32 A, making it ideal for high-load applications. Conductors should only be connected to push wire® splicing connector if their strip length is 13 mm. Featuring conductor terminals along with PUSH WIRE®, this product outperforms the competition. Our PUSH WIRE® connection uses the stiffness of the conductor to overcome the clamping spring's contact force, allowing you to clamp the conductor in place more quickly and easily. The item's dimensions are 21.2 x 11.3 x 18.6 mm (width x height x depth). Push wire® splicing connector is suitable for conductor cross sections ranging from 0.75 mm<sup>2</sup> to 4 mm<sup>2</sup>. Tin is used for coating the contact surfaces.



Notes	
General safety instructions	<div><b>NOTICE: Observe installation and safety instructions!</b></div> <div><ul style="list-style-type: none"><li>• <b>Only to be used by electricians!</b></li><li>• Do not work under voltage/load!</li><li>• Use only for proper use!</li><li>• Observe national regulations/standards/guidelines!</li><li>• Observe technical specifications for the products!</li><li>• Observe the number of permissible potentials!</li><li>• Do not use damaged/dirty components!</li><li>• Observe conductor types, cross-sections and strip lengths!</li><li>• Insert conductor until it hits the product's backstop!</li><li>• Use original accessories!</li></ul></div> <div><b>To be sold only with installation instructions!</b></div>

Electrical data						
Ratings per		IEC/EN 60998			Approvals per	
		UL 486C				
Overvoltage category	III	III	II	Use group	B	C
Pollution degree	3	2	2	Rated voltage	-	600 V
Nominal voltage	-	-	450 V	Rated current	-	20 A
Rated surge voltage	-	-	4 kV			
Rated current	-	-	32 A			

Connection data		
Clamping units	8	<div><b>Connection 1</b></div> <div>Connection technology</div> <div>PUSH WIRE®</div> <div>Actuation type</div> <div>Push-in</div> <div>Connectable conductor materials</div> <div>Copper</div> <div>Solid conductor</div> <div>0.75 ... 4 mm² / 20 ... 12 AWG</div> <div>Stranded conductor</div> <div>1.5 ... 4 mm² / 18 ... 12 AWG</div> <div>Conductor diameter</div> <div>1.6 ... 2 mm / 20 ... 12 AWG</div> <div>Strip length</div> <div>13 mm / 0.51 inches</div> <div>Wiring direction</div> <div>Side-entry wiring</div>
Total number of potentials	1	

Physical data	
Width	21.2 mm / 0.835 inches
Height	11.3 mm / 0.445 inches
Depth	18.6 mm / 0.732 inches

Material data	
Note (material data)	<a href="#">Information on material specifications can be found here</a>
Color	transparent
Cover color	light gray
Material group	IIIa
Insulation material (main housing)	Polycarbonate (PC)
Flammability class per UL94	V2
Clamping spring material	Chrome-nickel spring steel (CrNi)
Contact material	Electrolytic copper (E <sub>Cu</sub> )
Contact Plating	Tin
Fire load	0.071 MJ
Weight	3.4 g



Environmental requirements		
Ambient temperature (operation)		+85 °C
Processing temperature		-35 ... +60 °C
Continuous operating temperature		-40 ... +105 °C
Temperature marking per EN 60998		T85


Commercial data		
PU (SPU)		400 (40) pcs
Packaging type		Box
Country of origin		DE
GTIN		4055143927192
Customs tariff number		85369010000

Product classification		
UNSPSC		39121409

Environmental Product Compliance		
RoHS Compliance Status		Compliant,No Exemption

### Approvals / Certificates

General approvals			Declarations of conformity and manufacturer's declarations		
   					
Approval	Standard	Certificate Name	Approval	Standard	Certificate Name
CB DEKRA Certification B.V.	IEC 60998	NL-86543	EU-Declaration of Confor- mity WAGO GmbH & Co. KG	-	-
ENEC 05 DEKRA Certification B.V.	EN 60998	71-127515	UK-Declaration of Confor- mity WAGO GmbH & Co. KG	-	-
KEMA/KEUR DEKRA Certification B.V.	EN 60669	71-101844			
UL_Listed_667F Underwriters Laboratories Inc.	UL 486C	E69654			
UL Underwriters Laboratories Inc.	UL 467	20180215-E201573			

Downloads	
Environmental Product Compliance	
Compliance Search	
Environmental Product Compliance 2773-408	

CAD/CAE-Data

CAD data
2D/3D Models 2773-408



1 Compatible Products

1.1 Optional Accessories

1.1.1 General accessories

1.1.1.1 Moisture protection



[Item No.: 207-1332](#)  
Gelbox; Branch; for cables; with gel; 221, 2x73 Series; max. 4 mm² connectors; without splicing connectors; Size 2; gray

[Item No.: 207-1333](#)  
Gelbox; Branch; for cables; with gel; 221, 2x73 Series; max. 4 mm² connectors; without splicing connectors; Size 3; gray

1.1.2 Mounting adapter

1.1.2.1 Mounting accessories



[Item No.: 2773-500](#)  
Mounting carrier; for single- and double-row con.; 2773 Series; for DIN-35 rail mounting/screw mounting; orange

Installation Notes

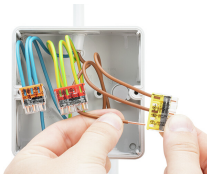
Conductor termination



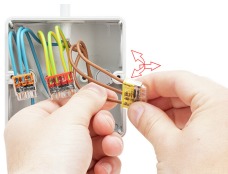
Strip solid or stranded conductor to 13 mm (0.51 inch).



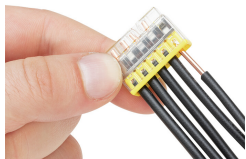
The transparent housing shows if conductors are fully inserted; within the colored base, a clear port shows if the conductor's strip length is correct. Conductors are correctly stripped if the clear port shows no bare conductor on the unprinted connector side. Picture shows center conductor with exceeded strip length.



Termination: Insert the stripped conductor until it hits the backstop.



Removal: Hold solid conductor to be removed and twist alternately left and right while pulling the connector.



Solid conductors are inserted into the connector by simply pushing them in.



Stranded conductors are inserted into the connector by simply pushing them in.

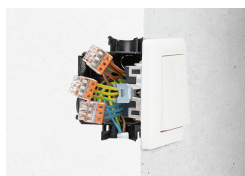


## Testing



Testing via test port opposite to conductor entry.

## Application



Thanks to their flat and compact design, these connectors are ideal for wiring in flush-mount switch boxes.



With six variants, always have the right connector.