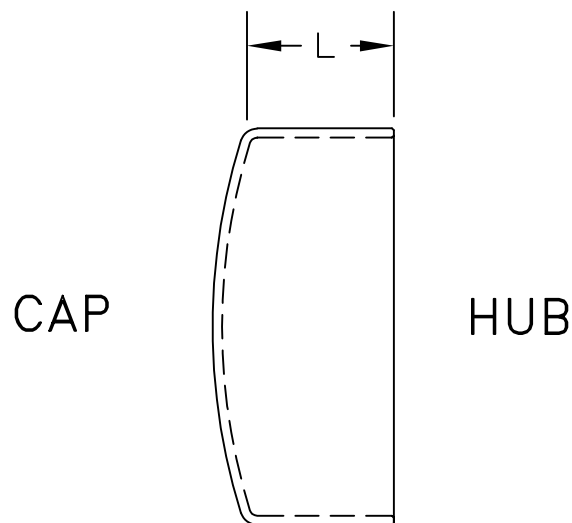


FABRICATION INSTRUCTIONS:

- 1) Split the entire length of 6" DUCT along the print line.
- 2) Cut the split pipe to the specified **FAB CUT LENGTH**.
- 3) Press out the cap in Glycol.
- 4) Use the router to trim the flashing.



CODE	Size	L Minimum	FAB CUT LENGTH
029075	125mm (5")	51mm (2.0")	330mm (13.0")
029706 BC HYDRO	125mm (5")	51mm (2.0")	279mm (11.0")

NOTICE: FOR INTERNAL USE ONLY; DIMENSIONS MAY CHANGE WITHOUT WARNING!