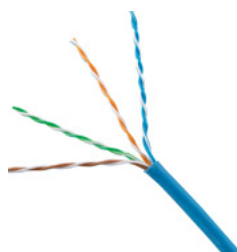


TX6™ Category 6 U/UTP Copper Cable

specifications

Category 6 cable shall exceed the ANSI/TIA-568.2-D Category 6 component Standard. The conductors shall be 24 AWG construction with FEP/polyolefin insulation. The copper conductors shall be twisted in pairs and covered by a low smoke, flame-retardant (CMP) PVC jacket.



technical information

Electrical performance:	Certified channel performance in a 4-connector configuration up to 100m and meets ANSI/TIA-568.2-D Category 6 Standard at swept frequencies up to 250 MHz Certified component performance up to 100m and meets the component requirements of ANSI/TIA-568.2-D Category 6 component Standard at swept frequencies up to 250 MHz
Conductors/insulators:	24 AWG solid copper covered by FEP/polyolefin insulation
Flame rating:	Plenum – NFPA 262 and CSA FT-6
Insulation diameter:	0.035" - 0.038" (0.88 - 0.96mm)
PoE compliance:	Meets IEEE 802.3af and IEEE 802.3at and IEEE 802.2bt for PoE applications
Installation tension:	25 lbf (110 N) maximum
Installation diameter:	0.034" - 0.046" (0.86mm - 1.16mm)
Temperature rating:	32°F to 122°F (0°C to 50°C) during installation -4°F to 167°F (-20°C to 75°C) during operation
Cable jacket:	Low smoke, flame-retardant PVC
Cable diameter:	0.197" (5.0mm) nominal
Cable weight:	27 lbs./1000' (12.2kg/305m)
Packaging:	1000' (305m) in an easy payout carton Package tested to ISTA Procedure 1A

key features and benefits

Third party tested:	Cable has been tested as part of the Category 6 U/UTP Copper Cabling System by an independent laboratory and complies with the electrical channel requirements of the following Standard: ANSI/TIA-568.2-D Category 6
Guaranteed channel performance above the Standards:	Industry leading guaranteed channel performance exceeding the TIA/ISO Standards with headroom guaranteed
Descending length cable markings:	Easy identification of remaining cable reduces installation time and cable scrap
Tested beyond the Standards:	Cable has been characterized to 550 MHz, 300 MHz above the Standard
Releex™ packaging:	Compact carton ensures proper performance and provides quick installation

applications

Interoperable and backward compatible, the TX6 U/UTP Cabling System provides design flexibility to protect network investments well into the future. With certified performance to the ANSI/TIA-568.2-D Category 6 and ISO 11801 Class E Standards, this system will support the following applications:

- Ethernet 10BASE-T, 100BASE-T (Fast Ethernet), 1000BASE-T (Gigabit Ethernet), 10GBASE-T (10 Gigabit Ethernet over limited distances as specified in the industry 10GBASE-T Standards)
- 155 Mb/s ATM, 622 Mb/s ATM, 1.2 Gb/s ATM
- Token Ring 4/16

TX6 Category 6 U/UTP Copper Cable

Plenum: PUP6C04**-W

Cable Prep Tools

Wire stripping tool: CWST

Wire snipping tool: CJAST

**For standard cable colors, add suffix BU (Blue), WH (White), RD (Red), OR (Orange), YL (Yellow), GR (Green), VL (Violet), IG (International Gray), or BL (Black).

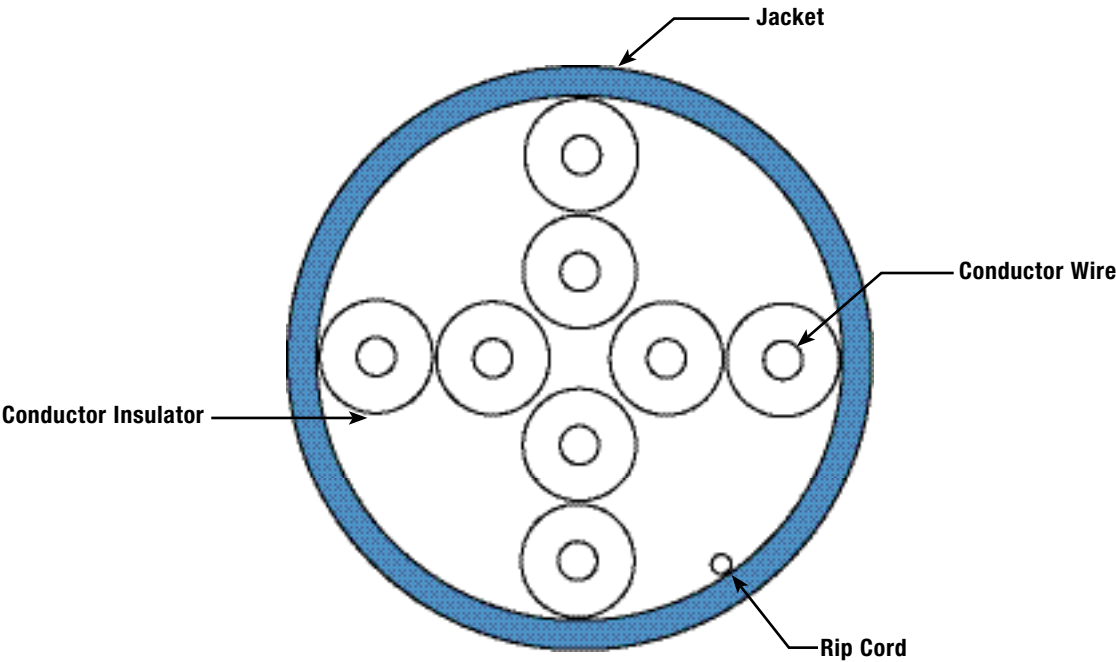
Visit www.panduit.com for connectivity components.

TX6™ Category 6 U/UTP Copper Cable

additional specifications

Mechanical Test	
Ultimate Breaking Strength	>90 lbf (400 N)
Minumum Bend Radius	4x cable diameter
Electrical Test	
Nominal Velocity of Propagation (NVP)	72%
Operating Voltage, Maximum	80 V

cable construction



WORLDWIDE SUBSIDIARIES AND SALES OFFICES

PANDUIT US/CANADA Phone: 800.777.3300	PANDUIT EUROPE LTD. London, UK Phone: 44.20.8601.7200	PANDUIT SINGAPORE PTE. LTD. Republic of Singapore Phone: 65.6305.7575	PANDUIT JAPAN Tokyo, Japan Phone: 81.3.6863.6000	PANDUIT LATIN AMERICA Guadalajara, Mexico Phone: 52.33.3777.6000	PANDUIT AUSTRALIA PTY. LTD. Victoria, Australia Phone: 61.3.9794.9020
--	---	---	--	--	---

For a copy of Panduit product warranties, log on to www.panduit.com/warranty



For more information
Visit us at www.panduit.com
Contact Customer Service by email: cs@panduit.com
or by phone: 800.777.3300

© 2023 Panduit Corp.
ALL RIGHTS RESERVED.
COSP550-WW-ENG
7/2023