

Surge-Trap® STXR Series

Surge Protective Device

SURGE PROTECTION

PANEL MOUNT SPD FOR UL 1449 TYPE 1 AND 2 APPLICATIONS



The Surge-Trap STXR Series UL listed Type 1 SPD, a leading choice in the STX series, meets the UL1449 5th Edition standards and is an excellent replacement for outdated surge arrestors. This series incorporates TPMOV® technology, ensuring it is one of the safest options available. Does not require additional overcurrent protection. The STXR series boasts a compact design and offers flexibility for line or load installation, making it ideal for both branch panel and individual equipment protection.

Technical Data Overview	
Surge Current Rating (I_{max})	50kA – Per phase & per mode
System Voltage	120VAC - 600VAC
Nominal discharge current (I_n) [8x20 μ s]	20kA
Short Circuit Current Rating (SCCR)	200kA
Nominal power frequency	50 Hz or 60 Hz
Mounting	Fits 3/4" knockouts with 36" leads for easy installation
Response Time	Less than 1 nanosecond (one per phase)
Wiring	Pre-wired 36" (1m) 10AWG
Enclosure	NEMA 4X Non-metallic
Flammability	UL94-5VA
Operating & Storage Temperature	- 40°F (40°C) to + 185°F (85°C)
Relative Humidity Range	0 to 95% non-condensing
Visual Status Indicator	LED Green = Functional / OUT = Replace

FEATURES/BENEFITS

- Designed with industry leading Mersen TPMOV technology
- Optional mounting bracket for surface mount applications
- NEMA 4X enclosure for outdoor or indoor use
- Fits 3/4" knockouts with 36" leads for easy installation
- Up to 10 modes of protection (L-N, L-L, L-G optional, N-G optional)
- Bright LED status indicator, visible from side profile through clear cover
- 5-year manufacturer's warranty

APPLICATIONS

- Branch panel and/or individual equipment protection
- Commercial and industrial distribution panels
- Control panels

APPROVALS/STANDARDS

- ANSI/UL 1449 5th Edition, Type 1 SPD, File E210793
- CSA C22.2, Type 1 SPD
- UL96A Lightning Protection
- RoHS Compliant



CATALOG NUMBERS AND ELECTRICAL CHARACTERISTICS

Catalog Number (includes suffixes*)	System Voltage and Configuration	I _n	Maximum Continuous Operating Voltage (MCOV, U _c)				Voltage Protection Rating (VPR) (UL 1449, 6kV, 3kA)			
			L-N	L-G	L-L	N-G*	L-N	L-G	L-L	N-G**
STXR120P05	120V Single Phase	20kA	150	300**	-	150	700	1200**	-	600
STXR240P05	240V Single Phase	20kA	320	640**	-	320	1200	1800**	-	1000
STXR240S05	240/120V Split Phase	20kA	150	300**	300	150	700	1200**	1200	600
STXR480S05	480/240V Split Phase	20kA	320	640**	640	320	1200	1800**	2000	1000
STXR208Y05	208/120V 3-Phase WYE	20kA	150	300**	300	150	700	1200**	1200	600
STXR380Y05	380/220V 3-Phase WYE	20kA	320	640**	640	320	1200	1800**	2000	1000
STXR480Y05	480/277V 3-Phase WYE	20kA	320	470**	640	150	1200	1800**	2000	700
STXR600Y05	600/347V 3-Phase WYE	20kA	420	690**	840	270	1500	2500**	2500	1000
STXR240D05	240V 3-Phase DELTA	20kA	-	320	640	-	-	1200	2000	-
STXR480D05	480V 3-Phase DELTA & HRG WYE	10kA	-	550	1100	-	-	1800	3000	-
STXR600D05	600V 3-Phase DELTA	20kA	-	690	840	-	-	2000	2500	-
			L-N/ HL-N	L-G/ HL-G	L-L/HL-L	N-G*	L-N/ HL-N	L-G/ HL-G	L-L/HL-L	N-G**
STXR240H05	240/120V High-Leg DELTA	20kA	150/270	300/420**	300/420	150	700/1.2k	1.2k/1.2k**	2k/2k	600
STXR480H05	480/240V High-Leg DELTA	10kA	320/550	320/550**	640/870	320	1.2/1.8k	1.2k/1.8k**	2k/2.5k	1000

** MCOV and VPR only applicable for models with options N-G protection - see below.

*AVAILABLE OPTIONS

N-G protection: Add Suffix “N” at the end of the part number for N-G protection. Example: STXR208Y05N.

- N-G protection is suggested downstream of N-G bond when the unit is installed > 10 ft. (3 m) from service entrance or transformer.
- Without “N” option for installation of SPD at or near service entrance or transformer < 10 ft. (3 m) (N-G Bonded does not require N-G protection).

Audible Alarm and Dry Contact: Add Suffix “A” at the end of the part number for Audible Alarm and Dry Contact. Example: STXR208Y05A.

For Both Options: Add the suffix “AN” at the end of the part number. Example: STXR208Y05AN

- Alarm sounds when any protection is lost.
- Form C Dry Contact (Pre-wired 36” 18AWG).
125VAC, 1A Resistive and 30VDC, 2A General Purpose.

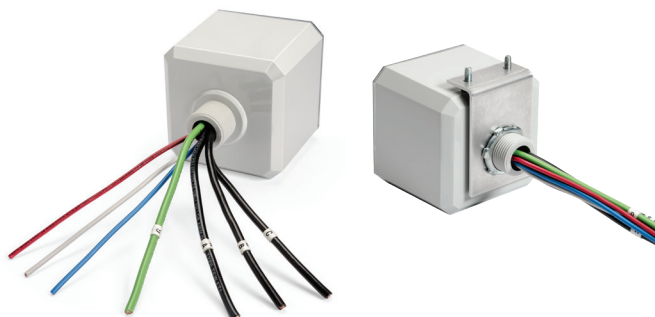
Red = Normally Closed

Gray = Common

Blue = Normally Open

ACCESSORIES

Catalog Number	Accessory Description
STXRMbk	STXR Mounting Bracket Kit. Includes (1) 90-degree bracket and (2) mounting screws



DIMENSIONS

