

# A70QS

Amp-Trap® Form 101

## HIGH SPEED FUSES



A70QS Amp-Trap® high speed fuses were developed in response to the need for improved overall performance of 700V semiconductor fuses for new equipment requirements. A70QS fuses have lower  $I^2t$  for better protection, longer life when subjected to cyclic loading, plus lower watts loss. A70QS is the best choice to protect dynamic solid state equipment such as motor drives, UPS, etc.

### FEATURES/BENEFITS:

- Very Low  $I^2t$  for improved protection of equipment
- Superior cycling ability for long, reliable life on high cyclic loading
- Low watts loss for cooler operation
- 700V AC/DC rating gives greater design versatility
- Ultra compact sizes allow down-sizing of existing equipment

Catalog Numbering System				
A	70	QS	150	- 4
Amp-Trap® Fuse	Rated Volts - 700	Style	Amperes	Mounting Types* Blades, bolt-in: 4K

### RATINGS

- **Volts:** 700VAC/VDC
- **Amps:** 35 to 800A
- **I.R.:** 200kA I.R. AC; 100kA I.R. DC
- **LR:** 10ms

### HIGHLIGHTS:

- 700V AC/DC rated
- Very low  $I^2t$
- Low watts loss
- Superior cycling ability
- All available with indicator (IL)

### APPLICATIONS:

- Protection of 700V or less motor drives, UPS, inverters, etc.

### APPROVALS:

- UL recognized component, AC/DC UL file E60314
- AC: guide no. JFHR2
- DC: tested to UL standard 198L parameters (35-800A)
- CSA certified File LR 12636

### SINGLE POLE FUSE BLOCKS FOR A70QS FUSES

Fuse Mounting Type	Fuse Ampere Rating	Catalog No.
A70QS-4	35-200	P243C
A70QS-4K	125-200	P266A
A70QS-4	225-600	P266A
A70QS-4K	450-600	FH20F3
A70QS-4	700-800	1SC375

Mersen products have been designed by Mersen for a range of specific applications to be operated depending on particular specification and conditions. Mersen makes no representation or/and warranty, either express or implied for products' reliability and life time or technical performance in case Mersen has not been provided with customer's specifications or if the products are not purchased directly from Mersen or its distributors and/or agents.

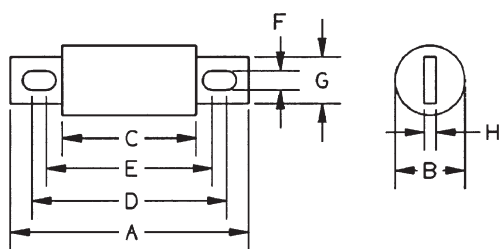
## CATALOG NUMBERS (AMPS)

A70QS35-4	A70QS80-4	A70QS150-4	A70QS200-4K	A70QS400-4	A70QS600-4
A70QS40-4	A70QS90-4	A70QS150-4K	A70QS225-4	A70QS450-4	A70QS600-4K
A70QS50-4	A70QS100-4	A70QS175-4	A70QS250-4	A70QS450-4K	A70QS700-4
A70QS60-4	A70QS125-4	A70QS175-4K	A70QS300-4	A70QS500-4	A70QS800-4
A70QS70-4	A70QS125-4K	A70QS200-4	A70QS350-4	A70QS500-4K	

\* For ampere ratings and styles not listed (including indicators), call Technical Services at 978-465-4853.

## DIMENSIONS

Outline Ref.	Mounting Type	Dimensions - Inches (mm)							
		A	B	C	D	E	F	G	H
A70QS35 to 100	4	4.38	1.00	2.88	3.69	3.50	0.31	0.75	0.13
		{111}	{25.4}	{73.0}	{93.6}	{88.9}	{7.9}	{19.0}	{3.2}
A70QS125 to 200	4	4.38	1.22	2.88	3.69	3.56	0.31	1.00	0.19
		{111}	{31.0}	{73.0}	{93.6}	{90.5}	{7.9}	{25.4}	{4.8}
A70QS125 to 200	4K	5.09	1.22	2.88	4.19	3.50	0.41	1.00	0.19
		{129}	{31.0}	{73.0}	{106}	{88.0}	{10.3}	{25.4}	{4.8}
A70QS225 to 400	4	5.09	1.50	2.84	4.16	3.53	0.40	1.00	0.25
		{129}	{38.1}	{72.2}	{106}	{89.7}	{10.3}	{25.4}	{6.4}
A70QS450 to 600	4	5.09	2.00	2.84	4.16	3.53	0.41	1.50	0.25
		{129}	{50.8}	{72.2}	{106}	{89.7}	{10.3}	{38.1}	{6.4}
A70QS450 to 600	4K	7.09	2.00	2.84	6.16	3.53	0.53	1.50	0.25
		{180}	{50.8}	{72.2}	{156}	{89.7}	{13.5}	{38.1}	{6.4}
A70QS700 to 800	4	7.09	2.50	2.84	5.28	4.91	0.53	2.00	0.38
		{180}	{63.5}	{72.2}	{134}	{125}	{13.5}	{50.8}	{9.5}



Mersen products have been designed by Mersen for a range of specific applications to be operated depending on particular specification and conditions. Mersen makes no representation or warranty, either express or implied for products' reliability and life time or technical performance in case Mersen has not been provided with customer's specifications or if the products are not purchased directly from Mersen or its distributors and/or agents.