



Color: ■ silver-colored

Notes	
Safety Information	Cannot be used for connecting ground conductors!
Physical data	
Width	19 mm / 0.748 inches
Material data	
Color	silver-colored
Fire load	0 MJ
Weight	16.2 g
Material	Steel V2A Stainless steel
Commercial data	
Product Group	2 (Terminal Block Accessories)
PU (SPU)	50 (10) pcs
Packaging type	Box
Country of origin	DE
GTIN	4017332611756
Customs tariff number	85369010000
Product classification	
UNSPSC	39121722
eCl@ss 10.0	27-14-11-50
eCl@ss 9.0	27-14-11-50
ETIM 9.0	EC002020
ETIM 8.0	EC002020
ECCN	NO US CLASSIFICATION



Environmental Product Compliance	
RoHS Compliance Status	Compliant,No Exemption

Processing temperature (min.)	-35 °C
Processing temperature (max.)	85 °C
Processing temperature	-35 ... +85 °C
Continuous operating temperature from	-60 °C
Continuous operating temperature up to	105 °C
Continuous operating temperature	-60 ... +105 °C

Downloads	
Environmental Product Compliance	
Compliance Search	
Environmental Product Compliance 790-116	<a href="#">↓</a>

Documentation			
Bid Text			
790-116	19.02.2019	xml 2.69 KB	<a href="#">↓</a>
790-116	28.11.2018	doc 23.50 KB	<a href="#">↓</a>

CAD/CAE-Data	
CAD data	CAE data
2D/3D Models 790-116	EPLAN Data Portal 790-116 <a href="#">↓</a>
	WSCAD Universe 790-116 <a href="#">↓</a>
	ZUKEN Portal 790-116 <a href="#">↓</a>



1 Compatible Products

1.1 Optional Accessories

1.1.1 DIN-rail

1.1.1.1 Shield termination



**Item No.: 790-145**  
Carrier rail; with special perforations; 1000 mm long; tin-plated; silver-colored

1.1.2 Installation

1.1.2.1 Shield termination



**Item No.: 790-100**  
Isolated mounting carrier; for busbar with screw M4 x 8 mm; gray



**Item No.: 790-101**  
Isolated mounting carrier; for busbar with sheet metal screw (3.5 x 9) mm; gray

1.1.3 N-busbar

1.1.3.1 Busbar



**Item No.: 210-133**  
Busbar; tin-plated; 1000 mm long; Cu 10 mm x 3 mm; white

1.1.3.2 Mounting accessories



**Item No.: 790-133**  
Busbar; tin-plated; 30 mm long; Cu 10 mm x 3 mm; silver-colored



**Item No.: 790-134**  
Busbar; tin-plated; 50 mm long; Cu 10 mm x 3 mm; silver-colored

1.1.3.3 Shield termination



**Item No.: 790-190**  
U-shaped busbar; Cu 10 mm x 3 mm; for 5 I/O; suitable for 750 Series I/O modules; silver-colored



**Item No.: 790-192**  
U-shaped busbar; Cu 10 mm x 3 mm; for 5 I/O; suitable for 750 Series I/O modules; silver-colored



**Item No.: 790-191**  
U-shaped busbar; Cu 10 mm x 3 mm; for 8 I/O; suitable for 750 Series I/O modules; silver-colored



**Item No.: 790-193**  
U-shaped busbar; Cu 10 mm x 3 mm; for 8 I/O; suitable for 750 Series I/O modules; silver-colored

1.1.4 Shield termination

1.1.4.1 Shield termination



**Item No.: 790-115**  
Carrier with 2 grounding feet; parallel to carrier rail; 125 mm long; Cu 10 mm x 3 mm; gray



**Item No.: 790-113**  
Carrier with grounding foot; 90° to carrier rail; 45 mm long; Cu 10 mm x 3 mm; suitable for 790 Series shield clamping saddles; gray



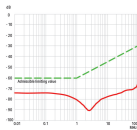
**Item No.: 790-112**  
Carrier with grounding foot; parallel to carrier rail; 25 mm long; Cu 10 mm x 3 mm; suitable for 790-108 and 790-116; gray



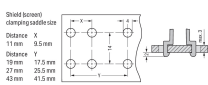
**Item No.: 790-114**  
Carrier with grounding foot; parallel to carrier rail; 45 mm long; Cu 10 mm x 3 mm; suitable for 790 Series shield clamping saddles and 791 Series shield clamps; gray

Installation Notes

Negative Shield Attenuation



Hole Dimensions for Panel Mounting



WAGO's shield connection system is highly effective because the clamping unit can be brought very close to the unshielded part of the cable.

Additionally, the spring material is part of the clamping saddle, providing a good electrical connection (the system also acts as a partial strain relief). The spring element integrated in the shield clamping saddle compensates for deformation and settling that results from a connected shield.

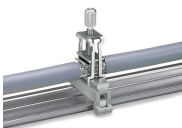


Installation

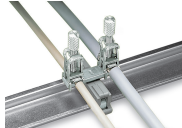
The shield clamping saddle is shipped ready for direct connection to the (10 x 3) mm busbar or to a drilled mounting plate. After connection, tighten the knurled screw to complete the installation. Maximum tightening torque: 0.5 Nm

Removal

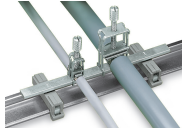
To remove the clamping saddle, unscrew until ratcheted mechanism is released, then slightly tip saddle and remove the clamping saddle.



Carrier with grounding foot\* (790-113), 45 mm long, busbar 90° to the DIN-rail  
\*for all shield clamping saddle sizes



Carrier with grounding foot\* (790-114), 45 mm long, busbar parallel to the DIN-rail  
\*for all shield clamping saddle sizes



Carrier with grounding foot\* (790-1145), 125 mm long, busbar parallel to the rail  
\*for all shield clamping saddle sizes



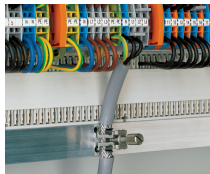
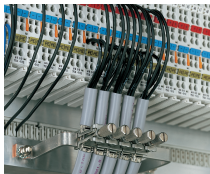
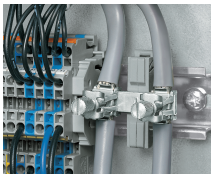
Securing an additional shield clamping saddle.



Tightening/removing a shield clamping saddle.

After connection, tighten the knurled screw to complete the installation. Recommended tightening torque: 0.5 Nm

To remove the clamping saddle, unscrew until ratcheted mechanism is released, then slightly tip saddle and remove the clamping saddle.



Carrier with grounding foot – busbar parallel to the rail

Insulated mounting carriers for a common shield reference potential, independent of housing potential

U-shaped (10 x 3) mm copper busbar

Snap shield clamping saddles into any metal plate (max. thickness: 3 mm).