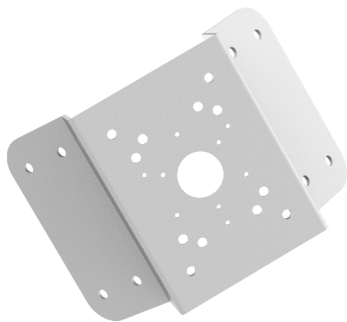


# Corner Mount Bracket

C01



## Key Features

- SECC Construction
- Max. Load Capacity: 22.1 lb (3.0 kg)

## Learn More



View the accessory selector for all mount options.

## Specifications

|                       |  |
|-----------------------|--|
| Weight                | 1.7 kg (3.8 lb)  |
| Load Bearing Capacity | 10.0 kg (22.1 lb)  |
| Material              | SECC   |
| Color                 | White  |
| Dimensions            | 9.6 in. x 6.7 in. x 5.4 in. (243.0 mm x 170.0 mm x 138.0 mm) |