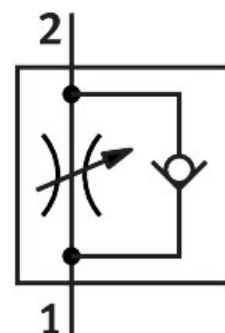


# One-way flow control valve GRLA-3/8-QS-8-RS-D

Part number: 534342

**FESTO**



## Data sheet

Feature	Value
Valve function	One-way flow control function
Pneumatic connection, port 1	QS-8
Pneumatic connection, port 2	G3/8
Adjustment component	Knurled screw
Type of mounting	Screw-in Via male thread
Standard nominal flow rate in flow control direction	820 l/min
Standard nominal flow rate in blocked direction	450 l/min...850 l/min
Operating pressure	0.2 bar...10 bar
Ambient temperature	-10 °C...60 °C
Maritime classification	See certificate
Mounting position	optional
Operating pressure complete temperature range	0.2 bar...10 bar
Standard flow rate in flow control direction 0.6->0 MPa (6->0 bar, 87->0 psi)	1300 l/min
Standard flow rate in non-return direction 0.6->0 MPa (6->0 bar, 87->0 psi)	1080 l/min...1420 l/min
Operating medium	Compressed air to ISO 8573-1:2010 [7:4:4]
Note on operating and pilot medium	Lubricated operation possible (in which case lubricated operation will always be required)
LABS (PWIS) conformity	VDMA24364-B1/B2-L
Cleanroom suitability, measured according to ISO 14644-14	Class 4 according to ISO 14644-1
Storage temperature	-10 °C...40 °C
Media temperature	-10 °C...60 °C
Nominal torque	10 Nm
Product weight	72 g
Note on materials	RoHS-compliant

Feature	Value
Material seals	NBR
Material hollow bolt	Wrought aluminium alloy Anodised
Material release ring	POM
Material knurled head	Wrought aluminium alloy Anodised
Material adjusting screw	High-alloy stainless steel
Material swivel fitting	Die-cast zinc