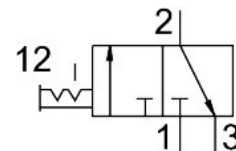


# On/off valve MS4-EM1-1/4-S

Part number: 541259

FESTO



## Data sheet

Feature	Value
Design	Rotary gate valve
Type of actuation	Manual
Exhaust-air function	Without flow control option
Type of piloting	Direct
Valve function	3/2 bistable
Operating pressure	0 MPa...1.4 MPa 0 bar...14 bar
C value	9 l/sbar
b value	0.39
Standard nominal flow rate (standardised to DIN 1343)	2200 l/min
Operating medium	Compressed air to ISO 8573-1:2010 [7:4:4] Inert gases
Note on operating and pilot medium	Lubricated operation possible (in which case lubricated operation will always be required)
Corrosion resistance class CRC	2 - Moderate corrosion stress
Note on materials	RoHS-compliant
LABS (PWIS) conformity	VDMA24364-B1/B2-L
Media temperature	-10 °C...60 °C
Ambient temperature	-10 °C...60 °C
Suitable for use with food	See supplementary material information
Type of mounting	Either: In-line installation With accessories
Mounting position	optional
Flow direction	Non-reversible
Product weight	210 g
Pneumatic connection, port 1	G1/4
Pneumatic connection, port 2	G1/4
Pneumatic connection, port 3	Not ducted
Material seals	TPE-U(PU)
Material housing	Die-cast aluminium