

## TECHNICAL DATA

# Fluke 370 FC Series True-rms Wireless AC/DC Clamp Meters



### LOG AND TREND MEASUREMENTS

Transmit results wirelessly via Fluke Connect® Measurements app

### WORK SAFELY

Capture measurements outside the arc flash zone with Bluetooth connectivity to your Apple or Android devices

### LO-PASS FILTER

Integrated VFD low-pass filter (Fluke 376 FC and 375 FC) for accurate motor drive measurements

### TRUE-RMS

True-rms voltage and current for accurate measurements on non-linear signals

### WARRANTY

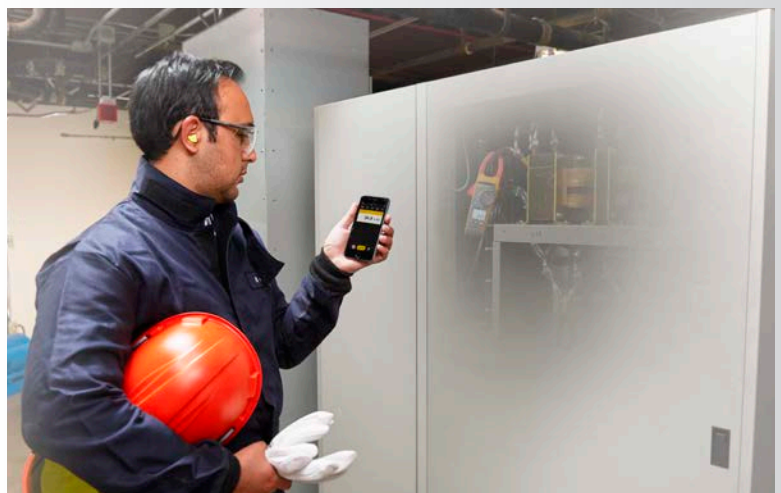
Three-year

**The new Fluke 370 FC Series (376 FC, 375 FC and 374 FC) offers advanced troubleshooting performance.** The iFlex® flexible current probe allows easy connections to wires in tight spaces. In addition, all three clamps are now part of the Fluke Connect® family of wireless test tools. Now you can:

- Log and trend measurements to pinpoint intermittent faults
- Transmit results wirelessly via Fluke Connect® Measurements app
- Create and send reports right from the field
- Capture measurements outside the arc flash zone with Bluetooth connectivity to your Apple or Android devices

### Product highlights

- Connect your meter to your smartphone using Fluke Connect Measurements app to increase the troubleshooting power of your clamp
- Read measurements on your phone at a safe distance, wearing less PPE while your meter takes all the risks
- Record results directly to your phone and the Fluke Cloud™
- Capture intermittent faults while performing other tasks using the logging capabilities of the Fluke 376 FC and 375 FC
- Create and share reports from the field via email, or converse in real time with ShareLive™ video calls
- iFlex flexible current probe expands the measurement range to 2500 A ac; provides access to large conductors in tight spaces (included with 376 FC; compatible with 375 FC and 374 FC)





- TPAK magnetic hanging strap (included with 376 FC; compatible with 375 FC and 374 FC) allows you to conveniently hang the meter while using the probes
- Integrated VFD low pass filter (Fluke 376 FC and 375 FC) for accurate motor drive measurements
- Proprietary in-rush measurement technology to filter out noise and capture motor starting current exactly as the circuit protection sees it
- CAT IV 600 V, CAT III 1000 V safety rating
- Three-year warranty
- Soft carrying case

## Measurement Capability

- 1000 A ac and dc current measurement (376 FC); 600 A ac and dc (375 FC and 364 FC)
- 2500 A ac current measurement with iFlex® flexible current probe
- 1000 V ac and dc voltage measurement
- True-rms voltage and current for accurate measurements on non-linear signals
- Frequency measurement to 500 Hz with body jaw and iFlex (376 FC and 375 FC)
- Resistance measurement to 60 k $\Omega$  (376 FC and 375 FC) or 6000  $\Omega$  (374 FC), with continuity detection
- Min, max, average and in-rush recording to capture variations automatically
- 500 mV dc measurement range to interface with other accessories (376 FC and 375 FC)
- 1000  $\mu$ F capacitance measurement



## Comparison chart

	Fluke 376 FC	Fluke 375 FC	Fluke 374 FC
CAT rating	CAT III 1000 V, CAT IV 600 V	CAT III 1000 V, CAT IV 600 V	CAT III 1000 V, CAT IV 600 V
A ac range	999.9 A with clamp jaws 2500 A with iFlex® flexible current clamp	600 A with clamp jaws 2500 A with optional iFlex® flexible current clamp	600 A with clamp jaws 2500 A with optional iFlex® flexible current clamp
A dc range	999.9 A	600 A	600A
Best resolution	0.1 A	0.1 A	0.1 A
V ac range	1000 V	1000 V	1000 V
V dc range	1000 V	1000 V	1000 V
mV dc range	500 mV	500 mV	
Ohms range	60.00 kΩ	60.00 kΩ	6,000 Ω
Frequency	5-500.0 Hz	5-500.0 Hz	
Capacitance	1 μF-1,000 μF	1 μF-1,000 μF	1 μ-1,000 μF
Auto shutoff	•	•	•
True RMS	•	•	•
Display hold	•	•	•
Inrush measurements	•	•	•
Backlight	•	•	•
DC zero	•	•	•
Min/max	•	•	•
VFD low pass filter	•	•	
Logging	•	•	
iFlex® flexible current clamp	Included	Optional	Optional
Fluke Connect® compatible	•	•	•

## Specifications

General specifications	
Maximum voltage between any terminal and earth ground	1000 V
Battery type	2 AA alkaline batteries, NEDA 15A, IEC LR6
Temperature	Operating: -10 °C to +50 °C (14 °F to + 122 °F) Storage: -40 °C to +60 °C (-40 °F to + 140 °F)
Operating humidity	Non condensing (< 10 °C (50 °F)), ≤90 % RH (at 10 °C to 30 °C (50 °F to 86 °F)), ≤75 % RH (at 30 °C to 40 °C (86 °F to 104 °F)), ≤45 % RH (at 40 °C to 50 °C (104 °F to 122 °F))
Altitude	Operating: 3,000 m (9,842 ft) Storage: 12,000 m (39,370 ft)
Dimensions	24.9 cm (9.8 in) x 8.5 cm (3.3 in) x 4.5 cm (1.7 in)
Weight	395 g (13.9 oz)
Jaw opening	34 mm (1.3 in)
Flexible current probe diameter	7.5 mm (.29 in)
Flexible current probe cable length (head to electronics connector)	1.8 m (70.8 in)
Safety	IEC 61010-1, Pollution Degree 2 IEC 61010-2-032: CAT III 1000 V / CAT IV 600 V IEC 61010-2-033: CAT III 1000 V / CAT IV 600 V
IP rating	IEC 60529: IP30, non-operating
Radio frequency certification	FCC ID:T68-FBLE IC:6627A-FBLE