



Contractor-grade MainsFit (UL Type-B) T8

13.4T8/CNG/48-850/MX18/G 25/1

Contractor grade, LEDtube, T8, 1200 mm, 13.4 W, 5000 K, 1800 lm, 50000 hour(s)

The Contractor-grade MainsFit (UL Type B) lamps are designed to provide simple retrofit solution to move from traditional fluorescent lamps to energy saving LEDs. This ballast bypass lamp is similar to other UL Type B lamps in the Philips family by providing proven energy savings, long life (50k hours), surge suppression and industry leading safety features. All lamps in the Contractor-grade family are also double-ended to help simplify the installation.

Product data

| General Information | | Operating and Electrical | |
|------------------------------------|--------------------|---------------------------------------|-------------|
| Cap-Base | G13 | Luminous Efficacy (rated) (Nom) | 134 lm/W |
| Nominal lifetime | 50,000 hour(s) | Color Consistency | <5 |
| Switching Cycle | 50,000 | Color rendering index (CRI) | 80 |
| Lighting Technology | LEDtube | LLMF At End Of Nominal Lifetime (Nom) | 70 % |
| Light Technical | | Input Frequency | 50 to 60 Hz |
| Color Code | 850 [CCT of 5000K] | Power Consumption | 13.4 W |
| Beam Angle (Nom) | 220 degree(s) | Lamp Current (Max) | 158 mA |
| Luminous Flux | 1,800 lm | Lamp Current (Min) | 56 mA |
| Color Designation | Daylight | Wattage Equivalent | 32 W |
| Correlated Color Temperature (Nom) | 5000 K | Starting Time (Nom) | 0.5 s |

Contractor-grade MainsFit (UL Type-B) T8

| | |
|---------------------------|-----------|
| Warm-up time to 60% light | 0.5 s |
| Power Factor (Fraction) | 0.9 |
| Voltage (Nom) | 120-277 V |
| UL Type | UL Type B |

Temperature

| | |
|----------------------|-------|
| T-Case Maximum (Nom) | 55 °C |
|----------------------|-------|

Controls and Dimming

| | |
|----------|---------|
| Dimmable | Limited |
|----------|---------|

Mechanical and Housing

| | |
|--------------------|----------|
| Bulb Finish | Frosted |
| Bulb Material | Glass |
| Product Length | 1,200 mm |
| Bulb Shape | T8 |
| Net Weight (Piece) | 0.200 kg |

Approval and Application

| | |
|-----------------------|---|
| Energy Saving Product | Yes |
| Approval Marks | RoHS compliance UL certificate DLC compliance |

| | |
|---|---------------|
| EU RoHS compliant | Yes |
| Ambient temperature range | -20 to +45 °C |
| Post-consumer recycled plastic material ratio | 0 % |

Application Conditions

| | |
|-------------------------------------|----------------|
| can it be used in closed luminaires | Yes |
| Wireless Technology | Not applicable |

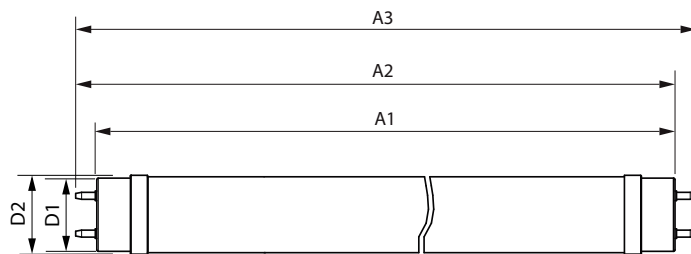
Sustainability Data

| | |
|-----------------------------------|-----|
| Product non-virgin material ratio | 0 % |
|-----------------------------------|-----|

Product Data

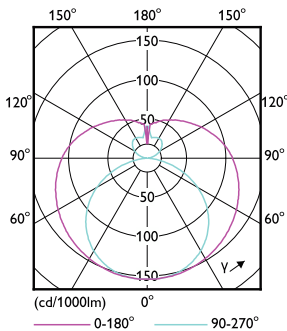
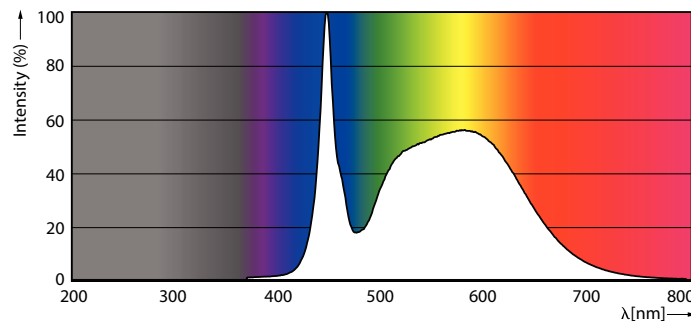
| | |
|---------------------------------|-------------------------------|
| Order product name | 13.4T8/CNG/48-850/MX18/G 25/1 |
| Full product name | 13.4T8/CNG/48-850/MX18/G 25/1 |
| Order code | 929004351304 |
| Material Nr. (12NC) | 929004351304 |
| Numerator - Quantity Per Pack | 1 |
| EAN/UPC - Product/Case | 046677610296 |
| Numerator - Packs per outer box | 25 |
| EAN/UPC - Case | 50046677610291 |

Dimensional drawing



| Product | D1 | D2 | A1 | A2 | A3 |
|-------------------------------|---------|---------|------------|------------|------------|
| 13.4T8/CNG/48-850/MX18/G 25/1 | 25.7 mm | 27.9 mm | 1,199.4 mm | 1,206.5 mm | 1,213.6 mm |

Photometric data

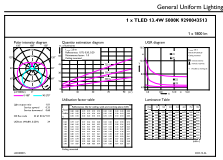


Spectral Power Distribution Colour - 13.4T8/CNG/48-850/MX18/G 25/1

Light Distribution Diagram - 13.4T8/CNG/48-850/MX18/G 25/1

Contractor-grade MainsFit (UL Type-B) T8

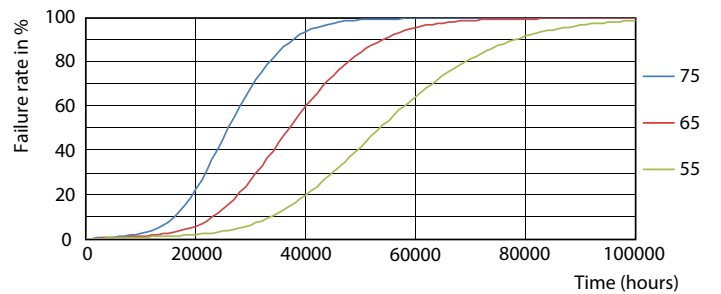
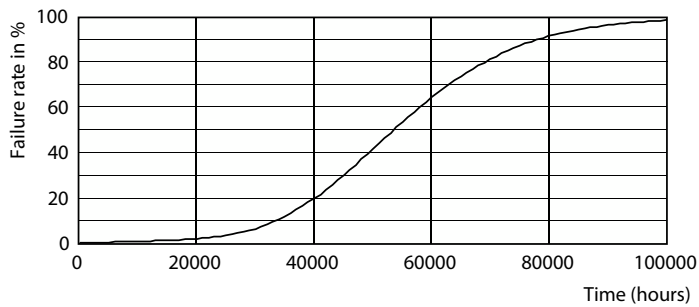
Photometric data



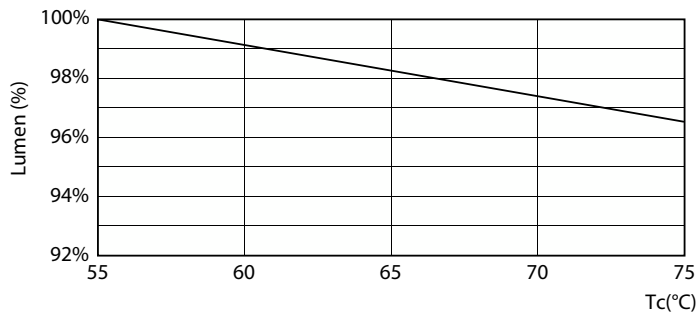
©2024 Philips Lighting B.V. Page 11 of 11

General uniform lighting - 13.4T8/CNG/48-850/MX18/G 25/1

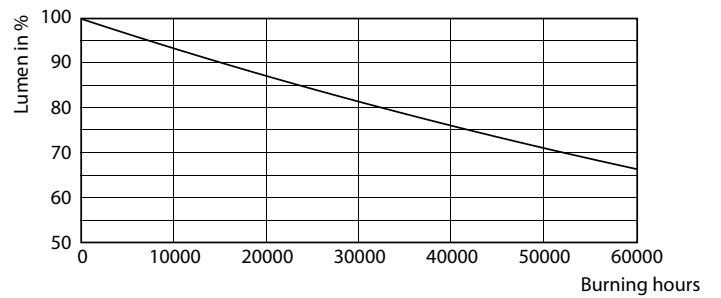
Lifetime



Life Expectancy Diagram



FailureRate

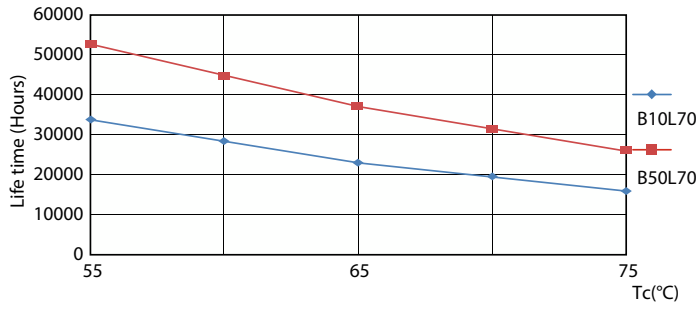


Lumen Maintenance Diagram - 13.4T8/CNG/48-850/MX18/G 25/1

Lumen Maintenance Diagram - 13.4T8/CNG/48-850/MX18/G 25/1

Contractor-grade MainsFit (UL Type-B) T8

Lifetime



LifetimeVsTc

