



Contractor-grade MainsFit (UL Type-B) T8

13.4T8/CNG/48-865/MX18/G 25/1

Contractor grade, LEDtube, T8, 1200 mm, 13.4 W, 6500 K, 1800 lm, 50000 hour(s)

The Contractor-grade MainsFit (UL Type B) lamps are designed to provide simple retrofit solution to move from traditional fluorescent lamps to energy saving LEDs. This ballast bypass lamp is similar to other UL Type B lamps in the Philips family by providing proven energy savings, long life (50k hours), surge suppression and industry leading safety features. All lamps in the Contractor-grade family are also double-ended to help simplify the installation.

Product data

General Information		Operating and Electrical	
Cap-Base	G13	Luminous Efficacy (rated) (Nom)	134 lm/W
Nominal lifetime	50,000 hour(s)	Color Consistency	<6
Switching Cycle	50,000	Color rendering index (CRI)	80
Lighting Technology	LEDtube	LLMF At End Of Nominal Lifetime (Nom)	70 %
Light Technical		Input Frequency	50 to 60 Hz
Color Code	865 [CCT of 6500K]	Power Consumption	13.4 W
Beam Angle (Nom)	220 degree(s)	Lamp Current (Max)	158 mA
Luminous Flux	1,800 lm	Lamp Current (Min)	56 mA
Color Designation	Cool Daylight	Wattage Equivalent	32 W
Correlated Color Temperature (Nom)	6500 K	Starting Time (Nom)	0.5 s

Contractor-grade MainsFit (UL Type-B) T8

Warm-up time to 60% light	0.5 s
Power Factor (Fraction)	0.9
Voltage (Nom)	120-277 V
UL Type	UL Type B

Temperature

T-Case Maximum (Nom)	55 °C
----------------------	-------

Controls and Dimming

Dimmable	Limited
----------	---------

Mechanical and Housing

Bulb Finish	Frosted
Bulb Material	Glass
Product Length	1,200 mm
Bulb Shape	T8
Net Weight (Piece)	0.200 kg

Approval and Application

Energy Saving Product	Yes
Approval Marks	RoHS compliance UL certificate DLC compliance

EU RoHS compliant	Yes
Ambient temperature range	-20 to +45 °C
Post-consumer recycled plastic material ratio	0 %

Application Conditions

can it be used in closed luminaires	Yes
Wireless Technology	Not applicable

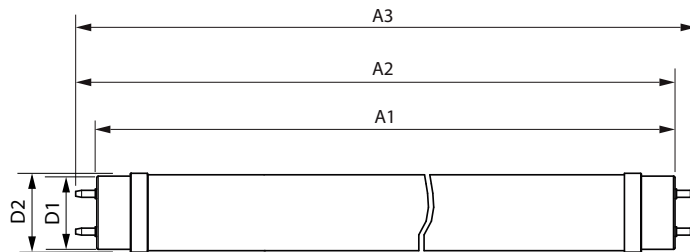
Sustainability Data

Product non-virgin material ratio	0 %
-----------------------------------	-----

Product Data

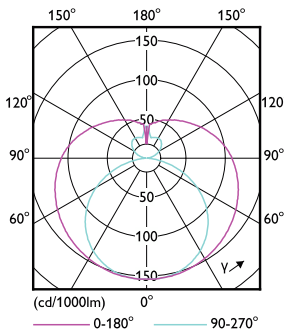
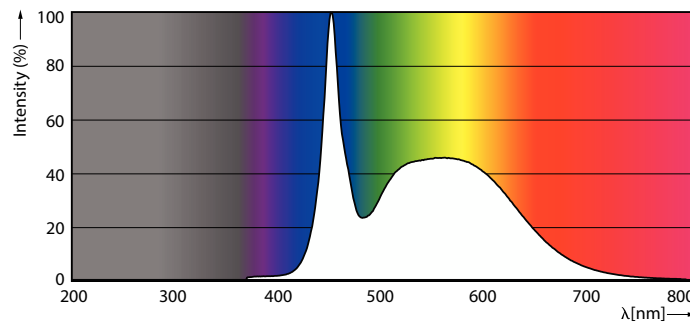
Order product name	13.4T8/CNG/48-865/MX18/G 25/1
Full product name	13.4T8/CNG/48-865/MX18/G 25/1
Order code	929004351404
Material Nr. (12NC)	929004351404
Numerator - Quantity Per Pack	1
EAN/UPC - Product/Case	046677610302
Numerator - Packs per outer box	25
EAN/UPC - Case	50046677610307

Dimensional drawing



Product	D1	D2	A1	A2	A3
13.4T8/CNG/48-865/MX18/G 25/1	25.7 mm	27.9 mm	1,199.4 mm	1,206.5 mm	1,213.6 mm

Photometric data

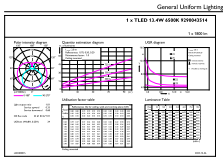


Spectral Power Distribution Colour - 13.4T8/CNG/48-865/MX18/G 25/1

Light Distribution Diagram - 13.4T8/CNG/48-865/MX18/G 25/1

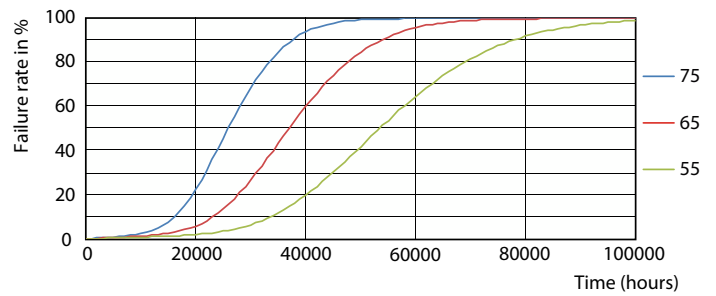
Contractor-grade MainsFit (UL Type-B) T8

Photometric data

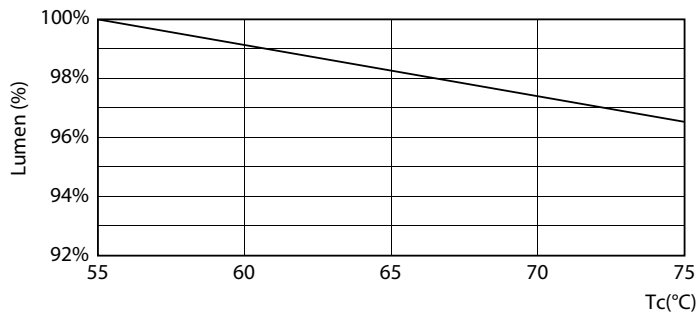


General uniform lighting - 13.4T8/CNG/48-865/MX18/G 25/1

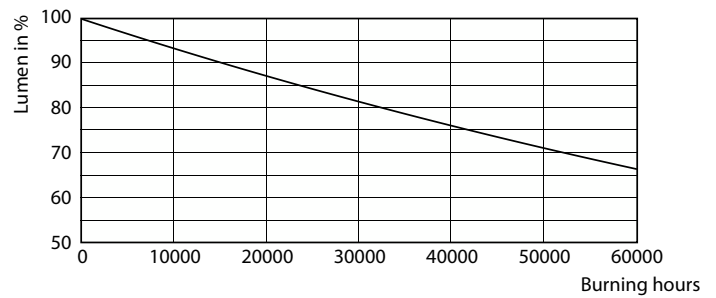
Lifetime



Life Expectancy Diagram



FailureRate

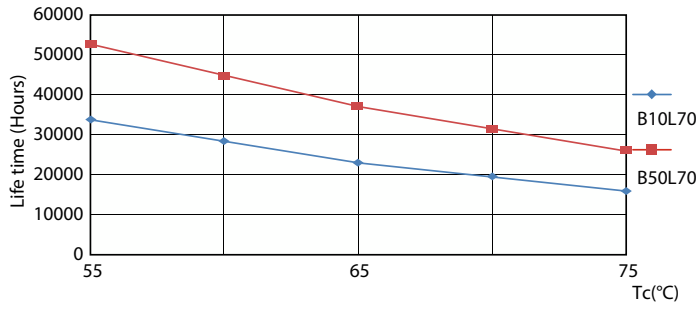


Lumen Maintenance Diagram - 13.4T8/CNG/48-865/MX18/G 25/1

Lumen Maintenance Diagram - 13.4T8/CNG/48-865/MX18/G 25/1

Contractor-grade MainsFit (UL Type-B) T8

Lifetime



LifetimeVsTc

