



Contractor-grade MainsFit (UL Type-B) T8

15.3T8/CNG/48-835/MX20/G 25/1

Contractor grade, LEDtube, T8, 1200 mm, 15.3 W, 3500 K, 2000 lm, 50000 hour(s)

The Contractor-grade MainsFit (UL Type B) lamps are designed to provide simple retrofit solution to move from traditional fluorescent lamps to energy saving LEDs. This ballast bypass lamp is similar to other UL Type B lamps in the Philips family by providing proven energy savings, long life (50k hours), surge suppression and industry leading safety features. All lamps in the Contractor-grade family are also double-ended to help simplify the installation.

Product data

General Information		Operating and Electrical	
Cap-Base	G13	Luminous Efficacy (rated) (Nom)	130 lm/W
Nominal lifetime	50,000 hour(s)	Color Consistency	<6
Switching Cycle	50,000	Color rendering index (CRI)	80
Lighting Technology	LEDtube	LLMF At End Of Nominal Lifetime (Nom)	70 %
Light Technical		Input Frequency	50 to 60 Hz
Color Code	835 [CCT of 3500K]	Power Consumption	15.3 W
Beam Angle (Nom)	220 degree(s)	Lamp Current (Max)	168 mA
Luminous Flux	2,000 lm	Lamp Current (Min)	63 mA
Color Designation	White (WH)	Wattage Equivalent	32 W
Correlated Color Temperature (Nom)	3500 K	Starting Time (Nom)	0.5 s

Contractor-grade MainsFit (UL Type-B) T8

Warm-up time to 60% light	0.5 s
Power Factor (Fraction)	0.9
Voltage (Nom)	120-277 V
UL Type	UL Type B

Temperature

T-Case Maximum (Nom)	60 °C
----------------------	-------

Controls and Dimming

Dimmable	Limited
----------	---------

Mechanical and Housing

Bulb Finish	Frosted
Bulb Material	Glass
Product Length	1,200 mm
Bulb Shape	T8
Net Weight (Piece)	0.200 kg

Approval and Application

Energy Saving Product	Yes
Approval Marks	RoHS compliance UL certificate DLC compliance

EU RoHS compliant	Yes
Ambient temperature range	-20 to +45 °C
Post-consumer recycled plastic material ratio	0 %

Application Conditions

can it be used in closed luminaires	Yes
Wireless Technology	Not applicable

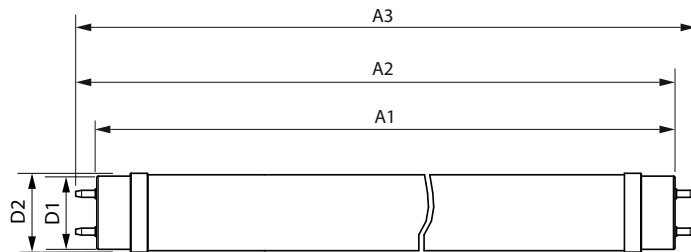
Sustainability Data

Product non-virgin material ratio	0 %
-----------------------------------	-----

Product Data

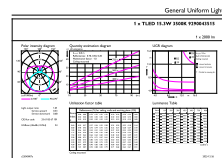
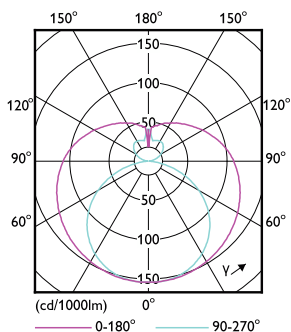
Order product name	15.3T8/CNG/48-835/MX20/G 25/1
Full product name	15.3T8/CNG/48-835/MX20/G 25/1
Order code	929004351504
Material Nr. (12NC)	929004351504
Numerator - Quantity Per Pack	1
EAN/UPC - Product/Case	046677610319
Numerator - Packs per outer box	25
EAN/UPC - Case	50046677610314

Dimensional drawing



Product	D1	D2	A1	A2	A3
15.3T8/CNG/48-835/MX20/G 25/1	25.7 mm	27.9 mm	1,199.4 mm	1,206.5 mm	1,213.6 mm

Photometric data

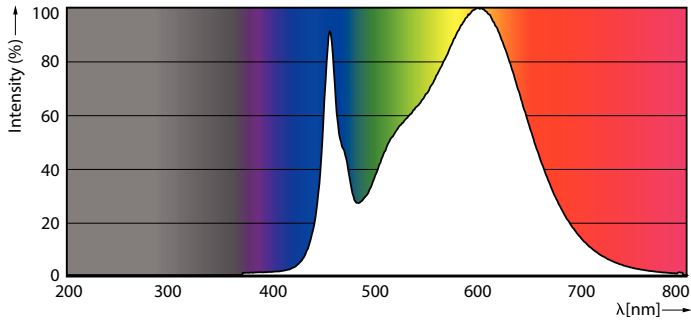


Light Distribution Diagram - 15.3T8/CNG/48-835/MX20/G 25/1

General uniform lighting - 15.3T8/CNG/48-835/MX20/G 25/1

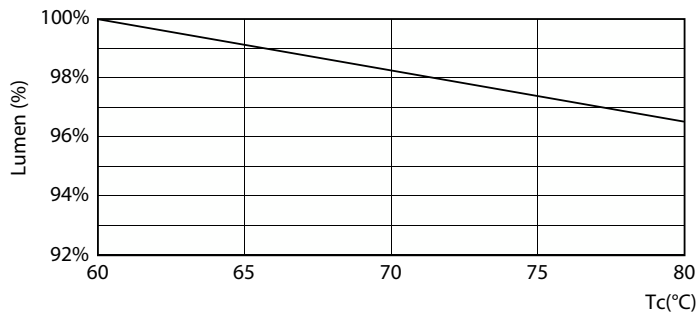
Contractor-grade MainsFit (UL Type-B) T8

Photometric data

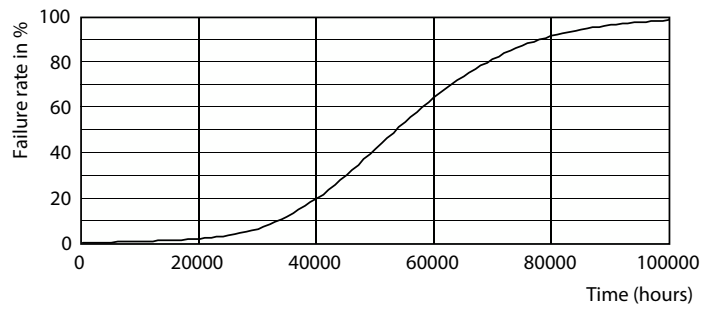


Spectral Power Distribution Colour - 15.3T8/CNG/48-835/MX20/G 25/1

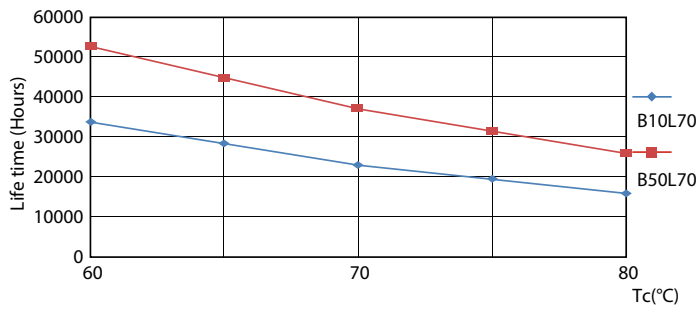
Lifetime



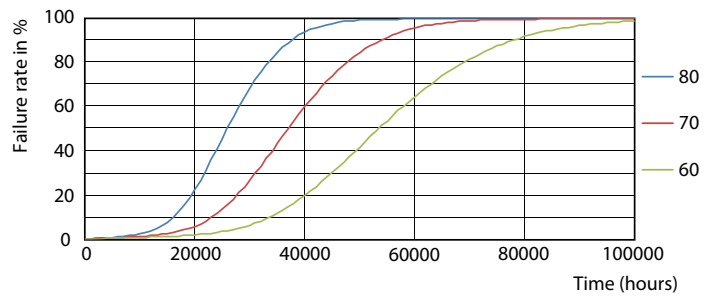
Lumen Maintenance Diagram - 15.3T8/CNG/48-835/MX20/G 25/1



Life Expectancy Diagram



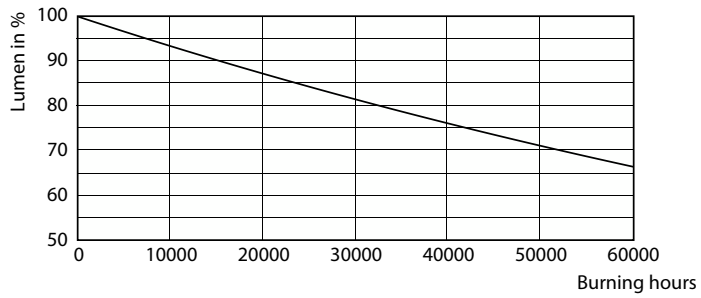
LifetimeVsTc



FailureRate

Contractor-grade MainsFit (UL Type-B) T8

Lifetime



Lumen Maintenance Diagram - 15.3T8/CNG/48-835/MX20/G 25/1

