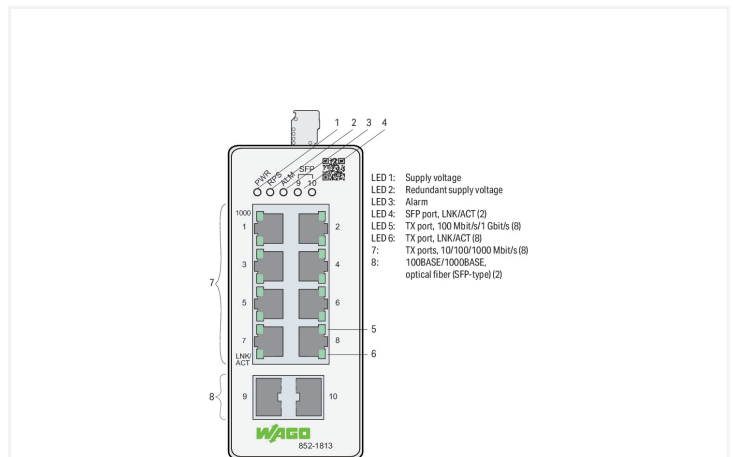
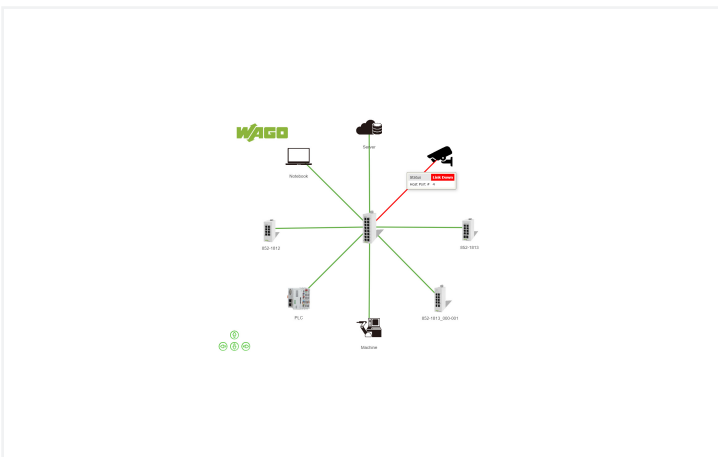
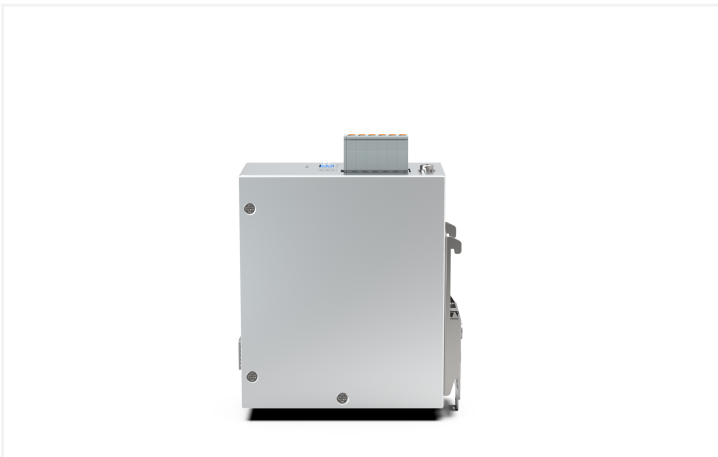


Data Sheet | Item Number: 852-1813
 Lean Managed Switch; 8 Ports 1000Base-T; 2-Slot 1000BASE-SX/LX

<https://www.wago.com/852-1813>



The configurable 852-1813 Industrial ETHERNET Switch is equipped with eight 10/100/1000BASE-T ports and two 100BASE-FX/1000BASE-SX/LX/ZX SFP ports (SFP modules are available as an option).

Packaged in a rugged housing, this switch offers both a redundant power supply and relay-based function monitoring. This device also streamlines network management: Commissioning and diagnostics are intuitive and can be performed without extensive IT knowledge. The topology map clearly displays the switch and connected devices. Key diagnostic information is displayed on the diagnostics dashboard.

The following functions increase the robustness, availability and security of the network.

Security:

Network segmentation per IEEE802.1Q (max. 5 VLANs), authentication of network participants per IEEE802.1X, firewall functions using access-control list (max. 32 entries)/service control, port security

Availability:

Rapid Spanning Tree Protocol (RSTP) for meshed and ring networks, ETHERNET Ring Protection Switching (ERPS) for up to two rings per switch, loop detection and storm control on each port

Configuration/Diagnostics/Maintenance:

Port mirroring, Modbus® registers, SNMP v3, SNMP trap events, alarm threshold, port statistics, backup and restore, system log, syslog server, command line interface with SSH/Telnet, topology map and dashboard

Technical data

Switching mode	Store-and-forward; non-blocking
Number of 1 Gb/s ports	8
Number of 1 Gb/s ports SFP	2
Communication standards	IEEE 802.3 10BASE-T IEEE 802.3u 100BASE-TX/FX IEEE 802.3ab 1000BASE-T IEEE 802.3z 1000BASE-SX/LX IEEE 802.3x Flow Control IEEE 802.1d Spanning Tree Protocol (STP) IEEE 802.1w Rapid Spanning Tree Protocol (RSTP) IEEE 802.1Q VLAN Tagging IEEE 802.1p Prioritization IEEE 802.1X Port Authentication IEEE 802.1ab Link Layer Discovery Protocol (LLDP) IEEE 802.3az Energy Efficient Ethernet ITU-T G8032v1/v2 Ethernet Ring Protection Switching (ERPS)
Redundancy function	Redundant DC power supply; STP; RSTP; ERPSv1/v2 (max. 2 rings per switch, max. 16 switches per ring, switching time < 800 ms)
Configuration options	DIP switch for signal contact Web-Based Management Command Line Interface SNMPv1/v2c/v3
Diagnostics	Signal contact; Modbus TCP; port status; port statistics; port load; traffic monitor; syslog; SNMP traps; loop detection; diagnostics dashboard; topology map Alarm contact; Alarm relay; NO; 1 A at 24 VDC
Security	Access-control list with max. 32 entries; port security; IEEE 802.1X authentication
MAC table (size)	8000 addresses
Jumbo frame size	10000 bytes
Supply voltage	24 ... 48 VDC; (±15 %); 24 ... 48 VDC (UL)
Power consumption (max.)	11 W
Current consumption (max.)	400 mA
ESD (contact/air discharge)	8 KV / 15 KV
Transmission rate	Copper cable: 10/1000 Mbit/s; Fiber optic: 100/1000 Mbit/s
Transmission medium (communication/fieldbus)	Fiber optic: SX Multi-Mode, LX Single-Mode
Optical fiber type	Single-mode and multi-mode
VLAN	Port-based and tag-based (max. 5 VLANs)

Connection Data

Connection technology: communication/fieldbus	Copper cable: 8 x RJ-45; Fiber optic: 2 x SFP slots (e.g., with SFP module and LC fiber-optic connector)
---	--

Physical data

Width	50 mm / 1.969 inches
Height	116 mm / 4.567 inches
Depth	100 mm / 3.937 inches

Mechanical data

Mounting type	DIN-35 rail
---------------	-------------

Material data

Weight	570 g
Conformity marking	CE

Environmental requirements

Ambient temperature (operation)	-40 ... +60 °C
Ambient temperature (storage)	-40 ... +85 °C
Protection type	IP30
Note on protection type	Use per UL 61010: Indoor
Pollution degree	2 per UL 61010
Relative humidity (without condensation)	95 %
Vibration resistance	Per IEC 60068-2-6
Shock resistance	per IEC 60068-2-27
EMC immunity to interference	per EN 61000-6-2
EMC emission of interference	per EN 61000-6-4

Commercial data

PU (SPU)	1 pcs
Packaging type	Box
Country of origin	TW
GTIN	4066966072983
Customs tariff number	85176200000

Product Classification

UNSPSC	43222612
ETIM 9.0	EC000734
ETIM 10.0	EC000734
ECCN	5A992.C

Environmental Product Compliance

RoHS Compliance Status	Compliant, No Exemption
------------------------	-------------------------

Approvals / Certificates

General approvals



Approval	Standard	Certificate Name
EAC GZO Almaty Standart	TP TC 020/2011	EAC CoC 03083
KC National Radio Research Agency	Article 58-2, Clause 3	MSIP-REM-W43-ISW852
UL Underwriters Laboratories Inc. (ORDINARY LOCATIONS)	UL 61010-2-201	E175199

Declarations of conformity and manufacturer's declarations

Approval	Standard	Certificate Name
EU-Declaration of Conformity WAGO GmbH & Co. KG	-	-
UK-Declaration of Conformity WAGO GmbH & Co. KG	-	-

Downloads

Environmental Product Compliance

Compliance Search
Environmental Product Compliance 852-1813 ↓




Documentation

Manual			
Product Manual Lean Managed Switch	V 1.0.0 24.08.2020	pdf 8311.85 KB	↓


Additional Information	
852-1813, Lean Managed Switch; 8 1000BASE-T Ports; 2 1000BASE-FX/TX Slots	pdf 171.99 KB ↓

Bid Text		
852-1813	docx 24.41 KB	↓
852-1813	x81 7.97 KB	↓
ausschreiben.de 852-1813		↓

CAD/CAE-Data

CAD data	CAE data
2D/3D Models 852-1813 	EPLAN Data Portal 852-1813 
	ZUKEN Portal 852-1813 

Runtime Software

Firmware			
0852-1813, Lean-Managed-Switch	V 04 27.02.2024	zip 10081.80 KB	

1 Compatible Products

1.1 Optional Accessories

1.1.1 Plug

1.1.1.1 SFP module



Item No.: 852-1210
SFP Module 1000BASE; LX Single-Mode 1310 nm LC; 10 km; Extended temperature range; Digital Diagnostics Monitoring; silver-colored

Item No.: 852-1200
SFP Module 1000BASE; SX Multi-Mode 850 nm LC; 0.55 km; Extended temperature range; Digital Diagnostics Monitoring; silver-colored

Item No.: 852-1280
SFP Module 1000BASE; ZX Single-Mode 1550 nm LC; 80 km; Extended temperature range; Digital Diagnostics Monitoring; silver-colored

Item No.: 852-202
SFP Module 100BASE; FX Multi-Mode 1310 nm LC; 2 km; DDM; Extreme; silver-colored



Item No.: 852-201/107-002
SFP Module 100BASE; FX Multi-Mode 1310 nm LC; 2 km; silver-colored

Item No.: 852-201/107-030
SFP Module 100BASE; LX Single-Mode 1310 nm LC; 30 km; silver-colored