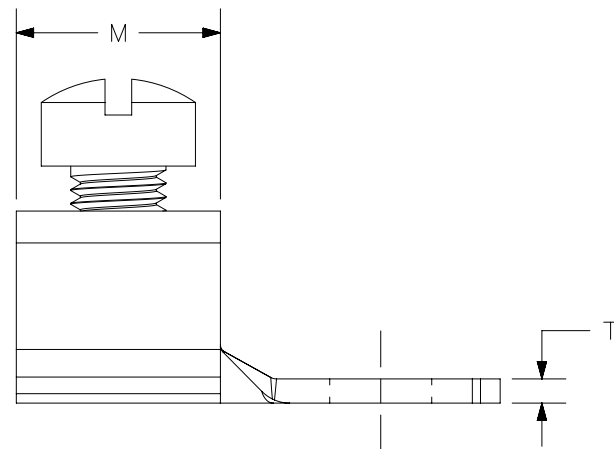
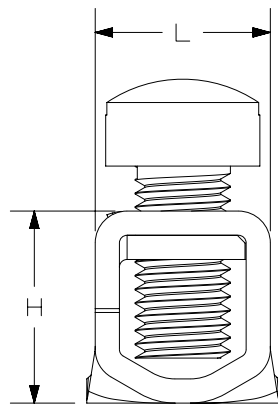


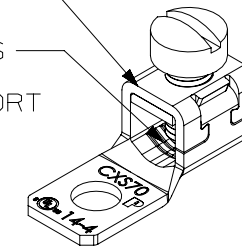
NOTES:

1. MATERIAL:
BODY: COPPER, "T" IN PART NUMBER DENOTES TIN PLATED BODY
SCREW: STEEL, ZINC PLATED
2. cULus LISTED FOR UP TO 600V AND TEMPERATURE RATED 90° C.
3. RATED FOR USE WITH COPPER STRANDED CODE CONDUCTOR ONLY.
4. THESE PARTS ARE RoHS COMPLIANT.
5. PACKAGING QTY:
C = 100
Q = 25

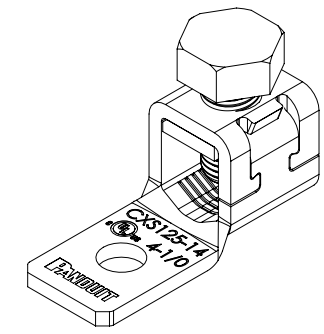


ONE PIECE BODY CONSTRUCTION

SERRATIONS ON BOTTOM OF WIRE PORT



CXS35, CXS70



CXS125

PANDUIT PART NUMBER	STRANDED COPPER WIRE RANGE	SCREW TORQUE IN-LB [N.m]	STUD SIZE (IN)	DIMENSIONS - IN [mm] ±.02 [0.5]										SCREW STYLE
				D DIA	G	W	K	A	M	T	H	L	C RAD MAX	
CXS35-36-C CXS35-36T-C	14 AWG - 6 AWG	14 AWG = 8 IN-LB [0.9] 12 AWG - 10 AWG = 10 IN-LB [1.1] 8 AWG - 6 AWG = 12 IN-LB [1.4]	3/16"	0.21 [5.3]	0.25 [6.4]	0.38 [9.7]	0.19 [4.8]	1.08 [27.4]	0.47 [12.0]	0.05 [1.3]	0.39 [9.9]	0.33 [8.5]	0.24 [6.1]	SLOTTED FILLISTER HEAD
CXS70-14-C CXS70-14T-C	14 AWG - 4 AWG	* (2) 14 AWG TWISTED = 15 IN-LB [1.7] * (2) 12 AWG TWISTED = 20 IN-LB [2.3] 14 AWG - 10 AWG = 20 IN-LB [2.3] 8 AWG - 4 BAWG = 25 IN-LB [2.8]	1/4"	0.27 [6.8]	0.31 [7.9]	0.50 [12.7]	0.25 [6.4]	1.28 [32.5]	0.53 [13.5]	0.06 [1.5]	0.50 [12.7]	0.47 [11.9]	0.28 [7.1]	SLOTTED FILLISTER HEAD
CXS125-14-Q CXS125-14T-Q	4 AWG - 1/0 AWG	50 IN-LB [5.6]	1/4"	0.27 [6.8]	0.44 [11.2]	0.62 [15.7]	0.31 [7.9]	1.60 [40.6]	0.65 [16.5]	0.09 [2.3]	0.73 [18.4]	0.60 [15.3]	0.41 [10.4]	HEX HEAD 1/2" WRENCH
CXS125-56-Q CXS125-56T-Q			5/16"	0.34 [8.7]										SLOTTED FILLISTER HEAD

*MULTIPLE WIRES MUST BE TWISTED TOGETHER BEFORE INSERTION INTO CONNECTOR.

NOTE: SCREW STYLE & SIZE MAY DIFFER FROM CHART. DIFFERENCE IN STYLE/SIZE WILL NOT AFFECT FIT, FORM, OR FUNCTION OF PART.

TITLE		CXS SERIES COPPER MECHANICAL LUGS	
ITEM REVISION NAME		12J038AQ/10	
DATASET FILE NAME		12J038AQ-DC/10A	
UNLESS OTHERWISE SPECIFIED, DIMENSIONAL TOLERANCES ARE: IN [mm]		PANDUIT	
.X ± .XXX ± .XX ± ANGLES ±			
DRAWING NUMBER:		12J038AQ-DC	
DRAWN BY	DATE	CHK	SCALE
JHNU	8-13	RLS	N/A
SHT 1 OF 1		B	

10A	2-9-26	JHNU	JHNU	JSUN	B. REVISED TORQUE VALUE FOR CXS70 PARTS: 20 IN-LB [2.3] WAS 20 IN-LB [1.7] A. CONVERTED TO NX	030772
REV	DATE	BY	CHK	APR	DESCRIPTION	ECN