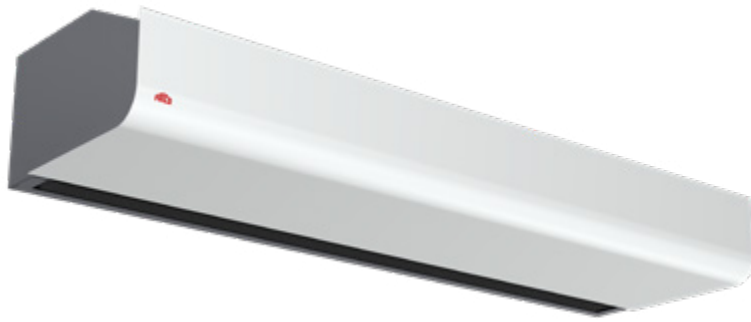


EC32

AIR CURTAIN FOR COMMERCIAL PREMISES



STYLISH AIR CURTAIN

Stylish air curtain for commercial and industrial premises, with EC motor and intelligent control. The EC32 has a modern and stylish design developed to fit all entrances.

- **ENERGY-SAVING THERMAL BARRIER**
- **SLEEK, CLEAN DESIGN**
- **CAN/CSA AND UL CERTIFIED**
- **HIGH-EFFICIENCY EC MOTOR**
- **AMCA LAB-TESTED (SOUND & PERFORMANCE)**

COLOURS

- **standard** : stainless steel housing, white (RAL 9016, NCS S 0500-N).
- grille, rear face and ends grey: (RAL 7046)
- other colors available on special order (not part of the Orora program)

MODEL

- electric heat
- no heat

MANUFACTURING

- quick access to internal components via the maintenance hatch.
- high-limit temperature control with automatic reset.
- integrated transformer for motor and control circuit (480V and 600V models)

VOLTAGE

- 208V, 480V, 600V, 60 Hz

MOTOR

- very low operating costs can be achieved thanks to the combination of EC motors and Frico's unique fan geometry

FAN

- squirrel-cage fans

ELEMENT

- element provides instant heat (electric heat model)

CONTROL

- door switch included

INSTALLATION

- maximum height installation:
 - surface and Recessed mounted: 10.5 ft. (3.2 m) above floor
- design kit can be used for unobtrusive installations using concealed brackets, tubes and cables (not included)

Note: The recommended installation height may vary according to the installation conditions. Air curtains must be placed as near to the entrance as possible and cover the entire width.

CERTIFICATION

- CAN/CSA-E60335-2-30:13 (R2018)
- UL 2021 Ed. 4.0

WARRANTY

- 5-year warranty against defects

IDEAL FOR:

commercial buildings and small industrial entrances

TECHNICAL SPECIFICATIONS

PRODUCT	VOLTAGE	kW	AMP.	cfm	MAX VELOCITY	dBA**	EFFECTIVE AIR WIDTH		WEIGHT	
CODE	VOLTS (1PH)	Lo/Hi	-	-	(FT/MIN)*	-	IN.	MM	LB	KG
SURFACE-MOUNTED										
ELECTRIC HEAT										
PAEC3210CE08-600VNA	600 (3)	4/8	9	1150	2346	73	38,4	975	57	26
PAEC3215CE12-600VNA	600 (3)	6/12	13	1600	2267	72	58,5	1486	82	37
PAEC3220CE16-600VNA	600 (3)	8/16	17	2250	2346	75	77,8	1976	112	51
PAEC3210CE08-480VNA	480 (3)	4/8	11	1150	2346	73	38,4	975	57	26
PAEC3215CE12-480VNA	480 (3)	6/12	16	1600	2267	72	58,5	1486	82	37
PAEC3220CE16-480VNA	480 (3)	8/16	21	2250	2346	75	77,8	1976	112	51
PAEC3210CE07-208VNA	208 (3)	4/7	21	1150	2346	73	38,4	975	57	26
PAEC3215CE10-208VNA	208 (3)	7/10	29	1600	2267	72	58,5	1486	82	37
PAEC3220CE13-208VNA	208 (3)	8/13	39	2250	2346	75	77,8	1976	112	51
NO HEAT										
PAEC3210CA-NA	208 (1)	-	0,7	1150	2346	72	38,4	975	57	26
PAEC3215CA-NA	208 (1)	-	0,9	1600	2267	72	58,5	1486	79	36
PAEC3220CA-NA	208 (1)	-	1,4	2250	2346	74	77,8	1976	106	48
RECESSED										
ELECTRIC HEAT										
AREC3210CE08-600VNA	600 (3)	4/8	9	950	2159	72	38,2	970	68	31
AREC3215CE12-600VNA	600 (3)	6/12	13	1350	2018	73	58,5	1486	91	41
AREC3220CE16-600VNA	600 (3)	8/16	17	1900	2159	74	78,7	2000	130	59
AREC3210CE08-480VNA	480 (3)	4/8	11	950	2159	72	38,2	970	68	31
AREC3215CE18-480VNA	480 (3)	6/12	16	1350	2018	72	58,5	1486	91	41
AREC3220CE16-480VNA	480 (3)	8/16	21	1900	2159	74	78,7	2000	130	59
AREC3210CE07-208VNA	208 (3)	4/7	21	950	2159	72	38,2	970	68	31
AREC3215CE10-208VNA	208 (3)	7/10	29	1350	2018	73	58,5	1486	91	41
AREC3220CE13-208VNA	208 (3)	8/13	39	1900	2159	74	78,7	2000	130	59
NO HEAT										
AREC3210CA-NA	208 (1)	-	0,7	950	2159	72	38,2	970	64	29
AREC3215CA-NA	208 (1)	-	0,9	1350	2018	73	58,5	1486	88	40
AREC3220CA-NA	208 (1)	-	1,4	1900	2159	74	78,7	2000	121	55

To order any custom colors from the R.A.L. chart, add "SP" at the end of the Product # and specify RAL color # on the order.
When ordering a different color, inquire about delivery times and prices.
Contact our customer service department for lead times.

*Measurements according to AMCA 220-05. Average values for products in the series. Measurement taken at 0.3 ft. (0.1 m).

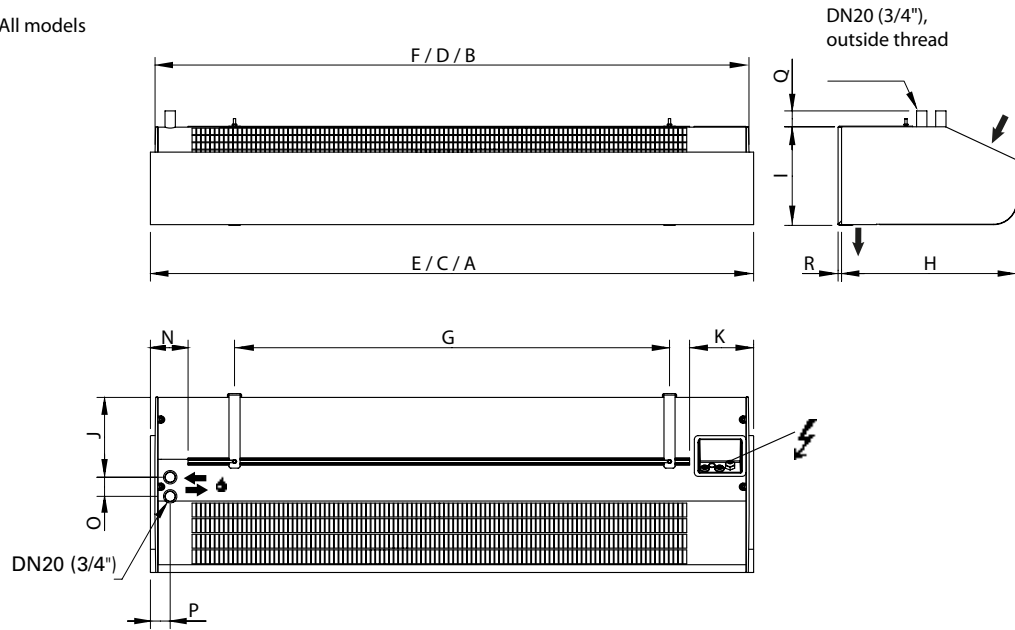
**Values shown are for total sound power levels for Installation Type A: free inlet, free outlet. The Sound power level ratings shown are in decibels, referred to 10-12 watts, calculated per AMCA Standard 301.

ACCESSORIES

PRODUCT	DESCRIPTION	QUANTITY INCLUDED	LENGTH	
			IN.	MM
PA3PF15	Ceiling mounting brackets for 1 and 1.5 m units	4	8.25	210
PA3PF20	Ceiling mounting brackets for 2 m units	6	8.25	210
PA2P15	Hanging brackets for 1 and 1.5 m units	2	39	1000
PA2P20	Hanging brackets for 2 m units	3	39	1000

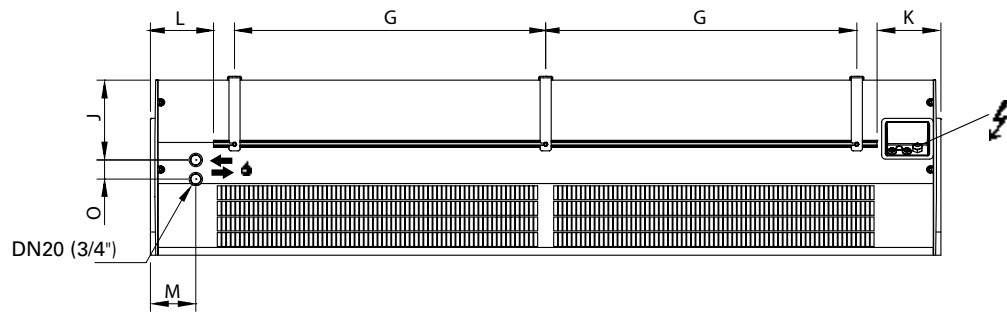
TECHNICAL DRAWINGS

All models

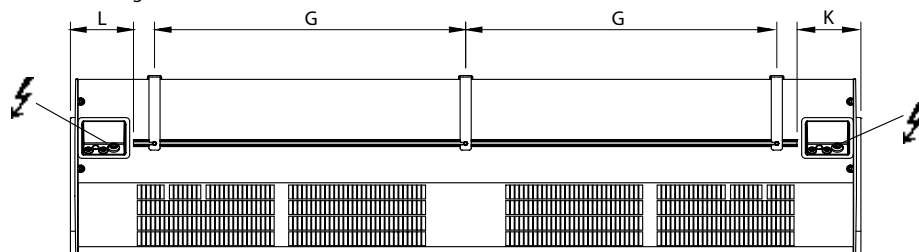


2 m / 6.6 ft units

Unit without heating or with water heating



Unit with electrical heating



	Metric [mm]	Imperial [in]	Type
A	2068	81.40	PAEC3220Cx
B	2045	80.50	PAEC3220Cx
C	1578	62.10	PAEC3215Cx
D	1555	61.20	PAEC3215Cx
E	1068	42.00	PAEC3210Cx
F	1045	41.10	PAEC3210Cx
G	500	19.68	
H	458	18.00	
I	256	10.00	

	Metric [mm]	Imperial [in]
J	209	8.22
K	167	6.57
L	165	6.49
M	119	4.68
N	99	3.89
O	50	1.96
P	52	2.00
Q	42	1.65
R	10	0.39