

Connectors for Aluminum/Copper Code Conductors

One-Hole Lugs



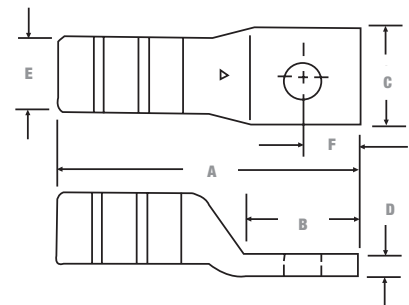
Cat. No.	Cable Size Al-Cu	Bolt Size (in.)	Dimensions in. (mm)						Die Code	Colour Code
			A	B	C	D	E	F		
60096	#10	#10	1.09 (27.7)	0.56 (14.2)	0.41 (10.4)	0.06 (1.5)	0.27 (6.9)	0.22 (5.6)	21	Red
60097		1/4	1.31 (33.3)	0.72 (18.3)	0.43 (10.9)	0.07 (1.8)	0.27 (6.9)	0.34 (8.6)		
60099		3/8	1.53 (38.9)	0.93 (23.6)	0.58 (14.7)	0.06 (1.5)	0.27 (6.9)	0.44 (11.2)		
60101-TB	#8	#10	1.22 (31.0)	0.56 (14.2)	0.41 (10.4)	0.09 (2.3)	0.28 (7.1)	0.22 (5.6)	24	Blue
60102-TB		1/4	1.38 (35.1)	0.71 (18.0)	0.44 (11.2)	0.09 (2.3)	0.28 (7.1)	0.34 (8.6)		
60103-TB		5/16	1.56 (39.6)	0.91 (23.1)	0.60 (15.2)	0.06 (1.5)	0.28 (7.1)	0.44 (11.2)		
60104-TB	#6	3/8	1.60 (40.6)	0.93 (23.6)	0.60 (15.2)	0.06 (1.5)	0.28 (7.1)	0.44 (11.2)	29	Grey
60106-TB		#10	1.52 (38.6)	0.59 (15.0)	0.47 (11.9)	0.13 (3.3)	0.35 (8.9)	0.22 (5.6)		
60107-TB		1/4	1.67 (42.4)	0.75 (19.1)	0.47 (11.9)	0.13 (3.3)	0.35 (8.9)	0.34 (8.6)		
60108-TB	#4	5/16	1.83 (46.5)	0.91 (23.1)	0.63 (16.0)	0.09 (2.3)	0.35 (8.9)	0.44 (11.2)	37	Green
60109-TB		3/8	1.86 (47.2)	0.93 (23.6)	0.63 (16.0)	0.09 (2.3)	0.35 (8.9)	0.44 (11.2)		
60112-TB		1/4	1.81 (46.0)	0.75 (19.1)	0.64 (16.3)	0.19 (4.8)	0.46 (11.7)	0.34 (8.6)		
60113-TB	#2	5/16	2.00 (50.8)	0.91 (23.1)	0.64 (16.3)	0.19 (4.8)	0.46 (11.7)	0.44 (11.2)	42	Pink
60114-TB		3/8	2.03 (51.6)	0.93 (23.6)	0.64 (16.3)	0.19 (4.8)	0.46 (11.7)	0.44 (11.2)		
60116-TB		1/4	1.91 (48.5)	0.75 (19.1)	0.72 (18.3)	0.19 (4.8)	0.51 (13.0)	0.34 (8.6)		
60117-TB	#1	5/16	2.06 (52.3)	0.91 (23.1)	0.72 (18.3)	0.19 (4.8)	0.51 (13.0)	0.44 (11.2)	45	Gold
60118-TB		3/8	2.09 (53.1)	0.93 (23.6)	0.72 (18.3)	0.19 (4.8)	0.51 (13.0)	0.44 (11.2)		
60120		1/2	2.25 (57.2)	1.41 (35.8)	0.88 (22.4)	0.19 (4.8)	0.51 (13.0)	0.69 (17.5)		
60122	1/0	1/4	2.30 (58.4)	0.81 (20.6)	0.75 (19.1)	0.19 (4.8)	0.56 (14.2)	0.34 (8.6)	50	Tan
60123		5/16	2.39 (60.7)	0.91 (23.1)	0.75 (19.1)	0.19 (4.8)	0.56 (14.2)	0.44 (11.2)		
60124		3/8	2.42 (61.5)	0.93 (23.6)	0.75 (19.1)	0.19 (4.8)	0.56 (14.2)	0.44 (11.2)		
60126	2/0	1/2	2.89 (73.4)	1.41 (35.8)	0.88 (22.4)	0.16 (4.1)	0.56 (14.2)	0.69 (17.5)	54	Olive
60128		1/4	2.36 (59.9)	0.81 (20.6)	0.88 (22.4)	0.19 (4.8)	0.62 (15.7)	0.34 (8.6)		
60129		5/16	2.51 (63.8)	0.97 (24.6)	0.88 (22.4)	0.19 (4.8)	0.62 (15.7)	0.44 (11.2)		
60130	3/0	3/8	2.51 (63.8)	0.97 (24.6)	0.88 (22.4)	0.19 (4.8)	0.62 (15.7)	0.44 (11.2)	60	Ruby
60132		1/2	2.95 (74.9)	1.41 (35.8)	0.94 (23.9)	0.19 (4.8)	0.62 (15.7)	0.69 (17.5)		
60134		1/4	2.48 (63.0)	0.87 (22.1)	0.97 (24.6)	0.22 (5.6)	0.70 (17.8)	0.34 (8.6)		
60135	4/0	5/16	2.64 (67.1)	1.03 (26.2)	0.97 (24.6)	0.22 (5.6)	0.70 (17.8)	0.44 (11.2)	66	White
60136		3/8	2.64 (67.1)	1.03 (26.2)	0.97 (24.6)	0.22 (5.6)	0.70 (17.8)	0.44 (11.2)		
60138		1/2	3.10 (78.7)	1.41 (35.8)	1.03 (26.2)	0.22 (5.6)	0.70 (17.8)	0.69 (17.5)		
60140	250 kcmil	1/4	2.58 (65.5)	0.87 (22.1)	1.06 (26.9)	0.22 (5.6)	0.77 (19.6)	0.34 (8.6)	71	Red
60141		5/16	2.83 (71.9)	1.09 (27.7)	1.06 (26.9)	0.22 (5.6)	0.77 (19.6)	0.44 (11.2)		
60142		3/8	2.83 (71.9)	1.09 (27.7)	1.06 (26.9)	0.22 (5.6)	0.77 (19.6)	0.44 (11.2)		
60144	300 kcmil	1/2	3.15 (80.0)	1.41 (35.8)	1.06 (26.9)	0.22 (5.6)	0.77 (19.6)	0.69 (17.5)	76	Blue
60147		5/16	3.53 (89.7)	0.88 (22.4)	1.21 (30.7)	0.25 (6.4)	0.86 (21.8)	0.38 (9.7)		
60148		3/8	3.59 (91.2)	0.93 (23.6)	1.21 (30.7)	0.25 (6.4)	0.86 (21.8)	0.38 (9.7)		
60150	350 kcmil	1/2	3.90 (99.1)	1.25 (31.8)	1.21 (30.7)	0.25 (6.4)	0.86 (21.8)	0.50 (12.7)	87	Brown
60151		5/8	4.65 (118.1)	2.00 (50.8)	1.21 (30.7)	0.25 (6.4)	0.86 (21.8)	0.75 (19.0)		
60154		3/8	3.73 (94.7)	0.93 (23.6)	1.29 (32.8)	0.27 (6.9)	0.92 (23.4)	0.38 (9.7)		
60156	400 kcmil	1/2	4.05 (102.9)	1.25 (31.8)	1.29 (32.8)	0.27 (6.9)	0.92 (23.4)	0.50 (12.7)	94	Green
60157		5/8	4.80 (121.9)	2.00 (50.8)	1.29 (32.8)	0.27 (6.9)	0.92 (23.4)	0.75 (19.0)		
60159		5/16	3.75 (95.3)	0.88 (22.4)	1.39 (35.3)	0.28 (7.1)	0.99 (25.1)	0.38 (9.7)		
60160	500 kcmil	3/8	3.80 (96.5)	0.93 (23.6)	1.39 (35.3)	0.28 (7.1)	0.99 (25.1)	0.38 (9.7)	99	Pink
60162		1/2	4.13 (104.9)	1.25 (31.8)	1.39 (35.3)	0.28 (7.1)	0.99 (25.1)	0.50 (12.7)		
60165		5/8	4.83 (122.7)	1.25 (31.8)	1.53 (38.9)	0.33 (8.4)	1.09 (27.7)	0.75 (19.0)		
60166	600 kcmil	1/2	5.58 (141.7)	2.00 (50.8)	1.53 (38.9)	0.33 (8.4)	1.09 (27.7)	0.75 (19.0)	106	Black
60168		1/2	4.95 (125.7)	1.25 (31.8)	1.65 (41.9)	0.38 (9.7)	1.18 (30.0)	0.50 (12.7)		
60171		1/2	4.95 (125.7)	1.25 (31.8)	1.79 (45.5)	0.38 (9.7)	1.28 (32.5)	0.50 (12.7)		
60172	700 kcmil	5/8	5.70 (144.8)	2.00 (50.8)	1.79 (45.5)	0.38 (9.7)	1.28 (32.5)	0.75 (19.0)	112	Purple
60174		5/8	5.83 (148.1)	2.00 (50.8)	1.92 (48.8)	0.37 (9.4)	1.36 (34.5)	0.75 (19.0)		
60176		5/8	5.95 (151.1)	2.00 (50.8)	2.04 (51.8)	0.38 (9.7)	1.44 (36.6)	0.75 (19.0)		
60178	750 kcmil	5/8	6.03 (153.2)	2.00 (50.8)	2.13 (54.1)	0.40 (10.2)	1.50 (38.1)	0.75 (19.0)	115	Yellow
60184		5/8	6.78 (172.2)	2.00 (50.8)	2.50 (63.5)	0.50 (12.7)	1.77 (45.0)	0.75 (19.0)		

Material: High-Conductivity Wrought Aluminum

Finish: Electro-Tin Plated

Designed and approved for use with both aluminum and copper conductors

- For 90°C certified to 600 V and recommended up to 35 kV ¥ applications
- Easily matched to the correct Color-Keyed® installing die for positive compressions
- Hardened steel dies compress connector around cable, changing round strands to polygonal shapes and cold flowing strands and connector into a solid, homogenous mass
- Long compression areas ensure complete contact
- Multiple compressions prevent creep of aluminum conductors
- Filled with high-temperature oxide-inhibitor compound
- Electro-tin plated prevents electrolytic corrosion of copper to ensure lowest contact resistance



¥ For installations from 16 kV up to 35 kV, consult shielded cable manufacturers for stress relief and insulation requirements.

Tooling: pp. E4-E62

Die Selector Chart: pp. E35-E50



Connectors for Aluminum/Copper Code Conductors

Two-Hole Lugs

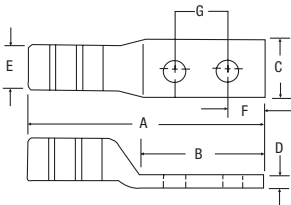


Material: High-Conductivity Wrought Aluminum

Finish: Electro-Tin Plated

Designed and approved for use with both aluminum and copper conductors

- For 90°C certified to 600 V and recommended up to 35 kV ¥ applications
- For aluminum and copper concentric conductors and compact code aluminum strandings
- Filled with oxide-inhibitor compound



Cat. No.	Cable Size	Bolt Size (in.)	Dimensions in. (mm)							Die Code	Colour Code
			A	B	C	D	E	F	G		
60230	1/0 AWG	3/8	3.50 (88.9)	1.90 (48.3)	0.88 (22.4)	0.19 (4.8)	0.62 (15.7)	0.38 (9.7)	1.00 (25.4)	50	Tan
60236	2/0 AWG	3/8	3.50 (88.9)	1.90 (48.3)	0.97 (24.6)	0.22 (5.6)	0.70 (17.8)	0.38 (9.7)	1.00 (25.4)	54	Olive
60238		1/2	5.03 (127.8)	3.41 (86.6)	0.97 (24.6)	0.22 (5.6)	0.70 (17.8)	0.75 (19.1)	1.75 (44.5)		
60242	3/0 AWG	3/8	3.66 (93.0)	1.18 (30.0)	1.06 (27.0)	0.22 (5.6)	0.77 (19.6)	0.38 (9.7)	1.00 (25.4)	60	Ruby
60244		1/2	5.16 (131.1)	3.41 (86.6)	0.06 (1.5)	0.22 (5.6)	0.77 (19.6)	0.75 (19.1)	1.75 (44.5)		
60248	4/0 AWG	3/8	4.58 (116.3)	1.18 (30.0)	1.21 (30.7)	0.25 (6.4)	0.86 (21.8)	0.38 (9.7)	1.00 (25.4)	66	White
60250		1/2	5.65 (143.5)	3.41 (86.6)	1.21 (30.7)	0.25 (6.4)	0.86 (21.8)	0.50 (12.7)	1.75 (44.5)		
60254	250 kcmil	3/8	4.73 (120.1)	1.93 (49.0)	1.29 (32.8)	0.27 (6.9)	0.92 (23.4)	0.38 (9.7)	1.00 (25.4)	71	Red
60256		1/2	5.80 (147.3)	3.00 (76.2)	1.29 (32.8)	0.27 (6.9)	0.92 (23.4)	0.50 (12.7)	1.75 (44.5)		
60260	300 kcmil	3/8	4.80 (121.9)	1.93 (49.0)	1.39 (35.3)	0.28 (7.1)	0.99 (25.1)	0.38 (9.7)	1.00 (25.4)	76	Blue
60262		1/2	5.88 (149.4)	3.00 (76.2)	1.39 (35.3)	0.28 (7.1)	0.99 (25.1)	0.50 (12.7)	1.75 (44.5)		
60265	350 kcmil	3/8	5.50 (139.7)	1.93 (49.0)	1.53 (38.9)	0.33 (8.4)	1.09 (27.7)	0.38 (9.7)	1.00 (25.4)	87	Brown
60267		1/2	6.58 (167.1)	3.00 (76.2)	1.53 (38.9)	0.33 (8.4)	1.09 (27.7)	0.50 (12.7)	1.75 (44.5)		
60268	400 kcmil	3/8	5.63 (143.0)	1.93 (49.0)	1.65 (41.9)	0.38 (9.7)	1.18 (30.0)	0.38 (9.7)	1.00 (25.4)	94	Green
60269		1/2	6.70 (170.2)	3.00 (76.2)	1.65 (41.9)	0.38 (9.7)	1.18 (30.0)	0.50 (12.7)	1.75 (44.5)		
60271	500 kcmil	3/8	5.63 (143.0)	1.93 (49.0)	1.79 (45.5)	0.38 (9.7)	1.28 (32.5)	0.38 (9.7)	1.00 (25.4)	99	Pink
60273		1/2	6.70 (170.2)	3.00 (76.2)	1.79 (45.5)	0.38 (9.7)	1.28 (32.5)	0.50 (12.7)	1.75 (44.5)		
60274	600 kcmil	3/8	5.75 (143.1)	1.93 (49.0)	1.92 (48.8)	0.37 (9.4)	1.36 (34.5)	0.38 (9.7)	1.00 (25.4)	106	Black
60275		1/2	6.83 (173.5)	3.00 (76.2)	1.92 (48.8)	0.37 (9.4)	1.36 (34.5)	0.50 (12.7)	1.75 (44.5)		
60276	700 kcmil	3/8	5.88 (149.4)	1.93 (49.0)	2.04 (51.8)	0.38 (9.7)	1.44 (36.6)	0.38 (9.7)	1.00 (25.4)	112	Purple
60277		1/2	6.95 (176.5)	3.00 (76.2)	2.04 (51.8)	0.38 (9.7)	1.44 (36.6)	0.50 (12.7)	1.75 (44.5)		
60278	750 kcmil	1/2	7.15 (181.6)	3.00 (76.2)	2.13 (54.1)	0.40 (10.2)	1.50 (38.1)	0.50 (12.7)	1.75 (44.5)	115	Yellow
60284	1000 kcmil	1/2	7.78 (197.6)	3.00 (76.2)	2.50 (63.5)	0.50 (12.7)	1.77 (45.0)	0.50 (12.7)	1.75 (44.5)	140	-

Bolt holes 3/8 in. on 1 in. centers, 1/2 in. on 1-3/4 in. centers.

¥ For installations from 16 kV up to 35 kV, consult shielded cable manufacturers for stress relief and insulation requirements.

Tooling: pp. E4-E62

Die Selector Chart: pp. E35-E50

Range-Taking Narrow-Tongue Single-Barrel Lugs

- For 90°C certified to 600 V and recommended up to 35 kV ¥ applications
- Bolt holes on 1-3/4 in. centers
- Wire barrel factory-filled with oxide-inhibitor compound

Material: Aluminum

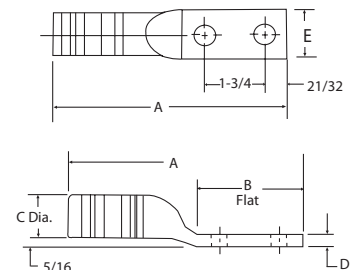
Finish: Tin-Plated



Cat. No.	Al-Cu Cable Size	Bolt Size (in.)	No. of compression Hydraulic 12 Ton tool or higher	Dimensions in. (mm)					Hex Die No.	Colour Code
				A	B	C	D	E		
60273N	350-500 kcmil	1/2	4	6.88 (174.8)	3.13 (79.5)	1.28 (32.5)	0.41 (10.4)	1.50 (38.1)	99H	Pink
60278N	500-750 kcmil		4	7.13 (181.1)	3.69 (93.7)	1.50 (38.1)	0.50 (12.7)	1.50 (38.1)	115H	Yellow
60267NT	350 Kcmil		4	6.25 (158.75)	3.00 (76.2)	1.09 (27.68)	0.50 (12.7)	1.09 (27.68)	87H	Brown
60273NT	500 Kcmil		3	5.06 (128.52)	3.00 (76.2)	1.18 (30.17)	0.50 (12.7)	1.18 (30.17)	94H	Green
60275NT	600 Kcmil		3	5.38 (136.52)	3.00 (76.2)	1.30 (33.14)	0.50 (12.7)	1.30 (33.14)	99H	Pink
60278NT	750 kcmil		3	5.38 (136.52)	3.00 (76.2)	1.03 (26.16)	0.50 (12.7)	1.30 (33.14)	99H	Pink

¥ For installations from 16 kV up to 35 kV, consult shielded cable manufacturers for stress relief and insulation requirements.

Tooling: pp. E4-E62. Die Selector Chart: pp. E35-E50



Connectors for Aluminum/Copper Code Conductors

Two-Way Splice Connectors



Cat. No.	Cable Size	Dimensions in. (mm)		Die Code	Colour Code
		A	E		
60500-TB	10 Str.	1.00 (25.4)	0.27 (6.9)	21	Red
60501-TB	8 Str.	1.19 (30.2)	0.28 (7.1)	24	Blue
60507-TB	6 Str.	1.63 (41.4)	0.35 (8.9)	29	Grey
60512	4 Str.	1.81 (46.0)	0.46 (11.7)	37	Green
60516	2 Str./3 Str.	1.81 (46.0)	0.51 (13.0)	42	Pink
60522-TB	1 Str.	2.38 (60.5)	0.56 (14.2)	45	Gold
60530-TB	1/0	2.38 (60.5)	0.62 (15.7)	50	Tan
60536	2/0	2.50 (63.5)	0.70 (17.8)	54	Olive
60542	3/0	2.81 (71.4)	0.77 (19.6)	60	Ruby
60548	4/0	3.66 (93.0)	0.86 (21.8)	66	White
60554	250 kcmil	3.91 (99.3)	0.92 (23.4)	71	Red
60560	300 kcmil	3.97 (100.8)	0.99 (25.1)	76	Blue
60565	350 kcmil	4.97 (126.2)	1.09 (27.7)	87	Brown
60568	400 kcmil	4.97 (126.2)	1.18 (30.0)	94	Green
60571	500 kcmil	4.97 (126.2)	1.28 (32.5)	99	Pink
60574	600 kcmil	5.22 (132.6)	1.36 (34.5)	106	Black
60576	700 kcmil	5.44 (138.2)	1.44 (36.6)	112	Purple
60578	750 kcmil	5.69 (144.5)	1.50 (38.1)	115	Yellow
60584	1000 kcmil	6.69 (169.9)	1.77 (45.0)	140	-

For aluminum-to-copper or aluminum-to-aluminum splicing

- Connectors are pre-filled with oxide-inhibitor
- For 90°C certified to 600 V and recommended up to 35 kV ¥ applications
- For aluminum and copper concentric conductors and compact code aluminum strandings
- Permit aluminum conductors to be spliced to copper or aluminum conductors

Material: High-Conductivity Wrought Aluminum

Finish: Electro-Tin Plated

¥ For installations from 16 kV up to 35 kV, consult shielded cable manufacturers for stress relief and insulation requirements.
Tooling: pp. E4–E62
Die Selector Chart: pp. E35–E50

Aluminum Reducing Connectors

Splice aluminum conductors to copper conductors of equal ampacities



Material: High-Conductivity Wrought Aluminum

Finish: Electro-Tin Plated

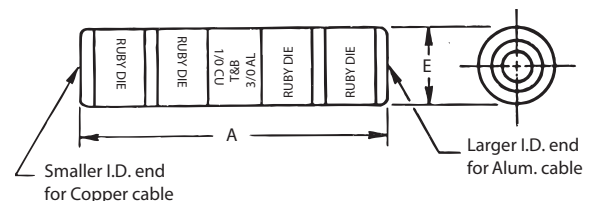
Installing Tools:

- TBM5(S) #10 AWG – 4/0 AWG
- TBM6(S) #10 AWG – 350 kcmil
- TBM8(S) #10 AWG – 350 kcmil

Cat. No.	Cable Size		Dimensions in. (mm)		Die Code	Colour Code
	Al	Cu	A	E		
60905-TB	8	10	0.81 (20.6)	0.28 (7.1)	24	Blue
60910	6	8	1.63 (41.4)	0.34 (8.6)	29	Grey
60915	4	6	1.81 (46.0)	0.44 (11.2)	37	Green
60925	1	3	2.38 (60.5)	0.53 (13.5)	45	Gold
60930	1/0	2	2.38 (60.5)	0.63 (16.0)	50	Tan
60935	2/0	1	2.50 (63.5)	0.69 (17.5)	54	Olive
60940	3/0	1/0	2.81 (71.4)	0.75 (19.1)	60	Ruby
60945	4/0	2/0	3.75 (95.3)	0.88 (22.4)	66H	White
60950	250 kcmil	3/0	4.00 (101.6)	0.94 (23.9)	71H	Red
60955	300 kcmil	4/0	4.06 (103.4)	1.00 (25.4)	76H	Blue
60960	350 kcmil	4/0	5.06 (128.5)	0.09 (2.3)	87H	Brown
60965	400 kcmil	250 kcmil	5.06 (128.5)	1.22 (31.0)	94H	Green
60970	500 kcmil	350 kcmil	5.06 (128.5)	1.31 (33.3)	99H	Pink
60975	600 kcmil	400 kcmil	5.31 (134.9)	1.34 (34.0)	106H	Black
60980	700 kcmil	500 kcmil	5.56 (141.2)	1.44 (36.6)	112H	Purple
60985	750 kcmil	500 kcmil	5.81 (147.6)	1.50 (38.1)	115H	Yellow

¥ For installations from 16 kV up to 35 kV, consult shielded cable manufacturers for stress relief and insulation requirements.
Die Selector Chart: pp. E35–E50

- For 90°C, certified to 600 V and recommended up to 35 kV ¥ applications
- Filled with high-temperature oxide-inhibitor compound
- Designed for the right combination of equivalent sizes (example: 4/0 aluminum to 2/0 copper)
- Selection table gives aluminum/copper equivalents to all sizes



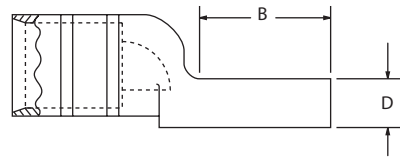
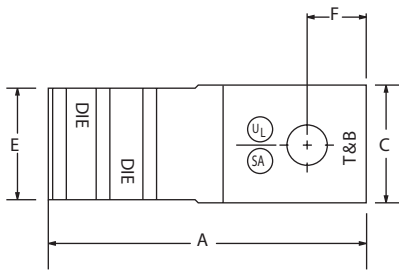
Connectors for Aluminum/Copper Code Conductors

One-Hole Aluminum Compact-Size Equipment Lugs



Much smaller than standard aluminum lugs for the same cable size

- For 90°C, certified 600 V applications
- For use with aluminum cables only
- Can be directly substituted for equipment mechanical lugs in most applications
- Only 7 dies handle all 14 lug sizes
- Factory-filled with joint compound
- Electro-Tin Plated
- Supplied with Neoprene insulating covers



Cat. No.	Aluminum Cable Size	Aluminum Range-Taking*	Bolt Hole (in.)	Dimensions in. (mm)						
				A	B	C	D	E	F	
61102	#8	-	1/4	1.33 (33.8)	0.54 (13.7)	0.50 (12.7)	0.14 (3.6)	0.37 (9.4)	0.25 (6.4)	
61107	#6			1.33 (33.8)	0.54 (13.7)	0.50 (12.7)	0.14 (3.6)	0.37 (9.4)	0.25 (6.4)	
61112	#4			1.33 (33.8)	0.54 (13.7)	0.50 (12.7)	0.14 (3.6)	0.37 (9.4)	0.25 (6.4)	
61116	#2			1.75 (44.5)	0.68 (17.3)	0.55 (14.0)	0.20 (5.1)	0.48 (12.2)	0.25 (6.4)	
61122	#1	#8-1/0	3/8	1.75 (44.5)	0.68 (17.3)	0.55 (14.0)	0.20 (5.1)	0.48 (12.2)	0.25 (6.4)	
61130	1/0			2.00 (50.8)	0.83 (21.1)	0.64 (16.3)	0.20 (5.1)	0.57 (14.5)	0.38 (9.7)	
61136	2/0			#1-2/0	2.00 (50.8)	0.83 (21.1)	0.64 (16.3)	0.20 (5.1)	0.57 (14.5)	0.38 (9.7)
61142	3/0			-	2.50 (63.5)	1.08 (27.4)	0.78 (19.8)	0.23 (5.8)	0.70 (17.8)	0.38 (9.7)
61148	4/0	2/0-4/0	1/2	2.50 (63.5)	1.08 (27.4)	0.78 (19.8)	0.23 (5.8)	0.70 (17.8)	0.38 (9.7)	
61156	250 kcmil	-		2.50 (63.5)	1.23 (31.2)	0.98 (24.9)	0.25 (6.4)	0.85 (21.6)	0.50 (12.7)	
61162	300 kcmil	#4-300		2.50 (63.5)	1.23 (31.2)	0.98 (24.9)	0.25 (6.4)	0.85 (21.6)	0.50 (12.7)	
61165	350 kcmil	250-350		3.25 (82.6)	1.23 (31.2)	1.20 (30.5)	0.41 (10.4)	1.04 (26.4)	0.56 (14.2)	
61171	500 kcmil	2/0-500	5/8	3.25 (82.6)	1.23 (31.2)	1.20 (30.5)	0.41 (10.4)	1.04 (26.4)	0.56 (14.2)	
61178	750 kcmil	500-750		3.75 (95.3)	1.54 (39.1)	1.49 (37.8)	0.41 (10.4)	1.33 (33.8)	0.81 (20.6)	

*For range-taking capability, use TBM8-750/TBM8-750M-1 Smart™ Tools.

Tooling: pp. E4–E62

Die Selector Chart: pp. E35–E50