

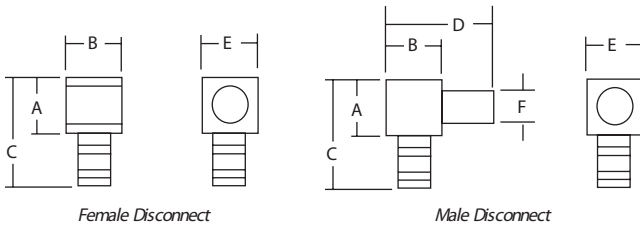
Motor Pigtail Connectors

One Line to One Load (two wires)

Quick, reliable change-out of electric motors with no bolting, taping or loose connections

Features

- Complete line of motor lead disconnects for 600 V and 5 kV applications, covering wire range from #16 through 4/0 AWG
- Fast, snap-together assembly offers maximum labor savings
- No need for nuts, bolts and washers or insulating tape – simply slide on reusable boot
- Total assembly fits into tight motor housings
- Quick disconnect – no knife cutting of melted tape, eliminating the risk of accidental cutting of wire insulation, resulting motor downtime and installer exposure
- Meet or exceed electrical and mechanical performance of bolted connections
- Constructed of high-conductivity copper with tin-plating
- Female disconnects equipped with beryllium copper interface band for dependable connections



Cat. No. Certified to 600 V		Wire Size	Body Size	Colour Code	Boot insulation	Dimensions in. (mm)						Strip Length (in.)
Female Disconnect	Male Disconnect					A	B	C	D	E	F	
MD1614F-0	MD1614M-0	16-14 AWG	0	Blue	MDBOOT-0	0.25 (6.4)	0.25 (6.4)	0.63 (16.0)	0.52 (13.2)	0.25 (6.4)	0.13 (3.2)	3/8
MD1614F-1	MD1614M-1				MDBOOT-1	0.38 (9.7)	0.38 (9.7)	0.78 (19.8)	0.75 (19.1)	0.38 (9.7)	0.25 (6.4)	
MD1210F-1	MD1210M-1	12-10 AWG	1	Yellow	MDBOOT-1	0.38 (9.7)	0.35 (8.9)	0.78 (19.8)	0.75 (19.1)	0.38 (9.7)	0.25 (6.4)	7/16
MD1210F-2	MD1210M-2				MDBOOT-2	0.50 (12.7)	0.50 (12.7)	0.90 (22.9)	1.00 (25.4)	0.50 (12.7)	0.37 (9.4)	
MD8F-1	MD8M-1	8 AWG	1	Red	MDBOOT-1	0.38 (9.7)	0.38 (9.7)	0.82 (20.8)	0.75 (19.1)	0.38 (9.7)	0.25 (6.4)	1/2
MD8F-2	MD8M-2				MDBOOT-2	0.50 (12.7)	0.50 (12.7)	0.95 (24.1)	1.00 (25.4)	0.50 (12.7)	0.37 (9.4)	
MD6F-1	MD6M-1	6 AWG	1	Blue	MDBOOT-1	0.38 (9.7)	0.38 (9.7)	0.88 (22.4)	0.75 (19.1)	0.38 (9.7)	0.25 (6.4)	17/32
MD6F-2	MD6M-2				MDBOOT-2	0.50 (12.7)	0.50 (12.7)	1.02 (30.5)	1.00 (25.4)	0.50 (12.7)	0.37 (9.4)	
MD4F-2	MD4M-2	4 AWG	2	Grey	MDBOOT-2	0.50 (12.7)	0.50 (12.7)	1.03 (40.6)	1.00 (25.4)	0.50 (12.7)	0.37 (9.4)	9/16
MD2F-2	MD2M-2	2 AWG	2	Brown	MDBOOT-2	0.50 (12.7)	0.50 (12.7)	1.09 (48.3)	1.00 (25.4)	0.50 (12.7)	0.37 (9.4)	
MD2F-3	MD2M-3	2 AWG	3	Brown	MDBOOT-3	0.88 (22.4)	0.88 (22.4)	1.46 (37.1)	1.75 (44.5)	0.88 (22.4)	0.50 (12.7)	5/8
MD1F-2	MD1M-2				MDBOOT-2	0.50 (12.7)	0.50 (12.7)	1.23 (31.2)	1.00 (25.4)	0.50 (12.7)	0.37 (9.4)	
MD1F-3	MD1M-3	1 AWG	2	Green	MDBOOT-2	0.88 (22.4)	0.88 (22.4)	1.56 (39.6)	1.75 (44.5)	0.88 (22.4)	0.50 (12.7)	11/16
MD10F-3	MD10M-3				MDBOOT-3	0.88 (22.4)	0.88 (22.4)	1.56 (39.6)	1.75 (44.5)	0.88 (22.4)	0.50 (12.7)	
MD20F-3	MD20M-3	2/0 AWG	3	Black	MDBOOT-3	0.88 (22.4)	0.88 (22.4)	1.59 (40.4)	1.75 (44.5)	0.88 (22.4)	0.50 (12.7)	3/4
MD30F-3	MD30M-3	3/0 AWG			MDBOOT-3	0.88 (22.4)	0.88 (22.4)	1.71 (43.4)	1.75 (44.5)	0.88 (22.4)	0.50 (12.7)	
MD40F-3	MD40M-3	4/0 AWG	3	Orange	MDBOOT-3	0.88 (22.4)	0.88 (22.4)	1.81 (46.0)	1.75 (44.5)	0.88 (22.4)	0.50 (12.7)	-
MD40F-4	MD40M-4				MDBOOT-4	1.25 (31.8)	1.25 (31.8)	2.89 (73.4)	2.69 (68.3)	1.25 (31.8)	0.81 (22.4)	
MD250F-4	MD250M-4	250 kcmil	4	Purple	MDBOOT-4	1.25 (31.8)	1.25 (31.8)	2.89 (73.4)	2.69 (68.3)	1.25 (31.8)	0.81 (22.4)	-
MD350F-4	MD350M-4	350 kcmil			MDBOOT-4	1.25 (31.8)	1.25 (31.8)	2.89 (73.4)	2.69 (68.3)	1.25 (31.8)	0.81 (22.4)	
MD500F-4	MD500M-4	500 kcmil			MDBOOT-4	1.25 (31.8)	1.25 (31.8)	2.89 (73.4)	2.69 (68.3)	1.25 (31.8)	0.81 (22.4)	

Kits: page E60
 Tooling: pp. E4–E62
 Die Selector Chart: pp. E35–E50



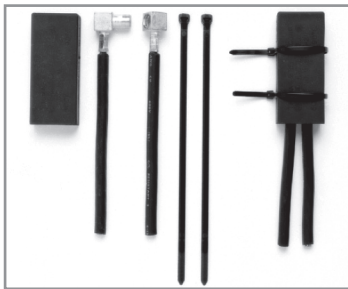
Material: High-Conductivity
Finish: Electro-Tin Plated
Insulator: Thermoplastic Elastomer
Contact Material: Beryllium Copper

Motor Pigtail Connectors

One Line to One Load (two wires) (cont'd)

Quick, easy installation!

- 1 Choose appropriate Color-Keyed® disconnect for conductor size to be terminated. Note colour of bands on disconnect barrel.
- 2 Select proper installing die by matching colour code to disconnect barrel colour bands.
- 3 Install die in T&B tool, insert stripped wire into barrel of disconnect and compress between colour bands. Repeat for mating half.
- 4 Snap the two halves together and slip on insulator over mated connection. Secure insulator with Ty-Rap® cable ties provided with the insulators.



600 V Version



5 kV Version



Cat. No. Certified to 600 V		WT112M WT111M WT2000 ERG4002 ERG4005	TBM45S	Installing Tools					
				TBM6, TBM6S		TBM5 TBM5S	TBM8 TBM8S	Hydraulic Tools	
				Upper Die	Lower Die	Die Set	Die Set	Die Code	Colour Code
Female Disconnect	Male Disconnect								
MD1614F-0	MD1614M-0	X	-	-	-	-	-	-	-
MD1614F-1	MD1614M-1								
MD1210F-1	MD1210M-1								
MD1210F-2	MD1210M-2								
MD8F-1	MD8M-1	-	-	-	-	-	-	-	-
MD8F-2	MD8M-2								
MD6F-1	MD6M-1								
MD6F-2	MD6M-2								
MD4F-2	MD4M-2	X	-	-	-	-	-	-	-
MD2F-2	MD2M-2								
MD2F-3	MD2M-3								
MD1F-2	MD1M-2								
MD1F-3	MD1M-3	-	-	-	-	-	-	-	-
MD10F-3	MD10M-3								
MD20F-3	MD20M-3								
MD30F-3	MD30M-3								
MD40F-3	MD40M-3								

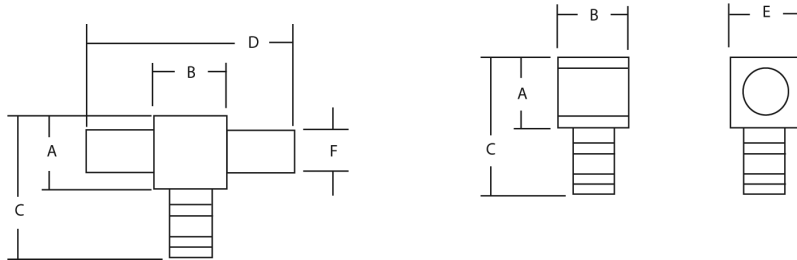
Specifications:
 Wire Range: No. 16 to 4/0 AWG.
 Rating: 600 V, 90°C.

Tooling: pp. E4-E62
 Die Selector Chart: pp. E35-E50

Motor Pigtail Connectors

One Line to Two Load (three wires)

- KON-TOUR™ louvered contact bands
- Colour-coded to match installing dies



Material: High-Conductivity Wrought Copper

Finish: Electro-Tin Plated

Contact Material: Beryllium Copper



Cat. No. Certified to 600 V		Wire Size	Body Size	Colour Code	Boot Insulation	Dimensions in. (mm)						Strip Length (in.)
Female Disconnect	Male Disconnect					A	B	C	D	E	F	
MD1614F-0	M2D1614M-0	16-14 AWG	0	Blue	MDBOOT-0	0.25 (6.4)		0.63 (16.0)	0.52 (13.2)	0.25 (6.4)	0.13 (3.3)	3/8
MD1614F-1	M2D1614M-1		1		MDBOOT-1	0.38 (9.7)	0.38 (9.7)	0.78 (19.8)	0.75 (19.1)	0.38 (9.7)	0.25 (6.4)	
MD1210F-1	M2D1210M-1	12-10 AWG	1	Yellow	M2DBOOT-1	0.38 (9.7)	0.35 (8.9)	0.78 (19.8)	0.75 (19.1)	0.38 (9.7)	0.25 (6.4)	7/16
MD1210F-2	M2D1210M-2		2		M2DBOOT-2	0.50 (12.7)	0.50 (12.7)	0.90 (22.9)	1.00 (25.4)	0.50 (12.7)	0.37 (9.4)	
MD8F-1	M2D8M-1	8 AWG	1	Red	M2DBOOT-1	0.38 (9.7)	0.38 (9.7)	0.82 (20.8)	0.75 (19.1)	0.38 (9.7)	0.25 (6.4)	1/2
MD8F-2	M2D8M-2		2		M2DBOOT-2	0.50 (12.7)	0.50 (12.7)	0.95 (24.1)	1.00 (25.4)	0.50 (12.7)	0.37 (9.4)	
MD6F-1	M2D6M-1	6 AWG	1	Blue	M2DBOOT-1	0.38 (9.7)	0.38 (9.7)	0.88 (22.4)	0.75 (19.1)	0.38 (9.7)	0.25 (6.4)	17/32
MD6F-2	M2D6M-2		2		M2DBOOT-2	0.50 (12.7)	0.50 (12.7)	1.02 (25.9)	1.00 (25.4)	0.50 (12.7)	0.37 (9.4)	
MD4F-2	M2D4M-2	4 AWG	2	Grey	M2DBOOT-2	0.50 (12.7)	0.50 (12.7)	1.03 (26.2)	1.00 (25.4)	0.50 (12.7)	0.37 (9.4)	9/16
MD2F-2	M2D2M-2	2 AWG	2			0.50 (12.7)	0.50 (12.7)	1.09 (27.7)	1.00 (25.4)	0.50 (12.7)	0.37 (9.4)	
MD2F-3	M2D2M-3			3	Brown	M2DBOOT-3	0.88 (22.4)	0.88 (22.4)	1.46 (37.1)	1.75 (44.5)	0.88 (22.4)	0.50 (12.7)
MD1F-2	M2D1M-2	1 AWG	2	Green	M2DBOOT-2	0.50 (12.7)	0.50 (12.7)	1.23 (31.2)	1.00 (25.4)	0.50 (12.7)	0.37 (9.4)	
MD1F-3	M2D1M-3			3	Pink		0.88 (22.4)	0.88 (22.4)	1.56 (39.6)	1.75 (44.5)	0.88 (22.4)	0.50 (12.7)
MD10F-3	M2D10M-3	1/0 AWG	3	Black	M2DBOOT-3	0.88 (22.4)	0.88 (22.4)	1.56 (39.6)	1.75 (44.5)	0.88 (22.4)	0.50 (12.7)	11/16
MD20F-3	M2D20M-3	2/0 AWG				0.88 (22.4)	0.88 (22.4)	1.59 (40.4)	1.75 (44.5)	0.88 (22.4)	0.50 (12.7)	
MD30F-3	M2D30M-3	3/0 AWG		Orange		0.88 (22.4)	0.88 (22.4)	1.71 (43.4)	1.75 (44.5)	0.88 (22.4)	0.50 (12.7)	3/4
MD40F-3	M2D40M-3	4/0 AWG		Purple		0.88 (22.4)	0.88 (22.4)	1.81 (46.0)	1.75 (44.5)	0.88 (22.4)	0.50 (12.7)	

Operating Range: 600 V max., 1000 V max. in signs and fixtures.

Listing: UL Listed and CSA Certified for 12/8 AWG solid copper conductors and stranded copper conductors in the sizes shown.

Selection: Always use the same body size when selecting male and female disconnects.

For example: to connect a 2 AWG male to an #8 AWG female, select cat. no. M2DM-2 and MD8F-2. Both have body size 2.

Insulation: Use insulating boots matching the disconnect body size as indicated in the chart.

To protect the connection from moisture and dirt, use sealing compound cat. no. MDBOOT-SEAL.

Tooling: pp. E4-E62

Die Selector Chart: pp. E35-E50



Motor Pigtail Connectors

5 kV Motor Pigtail Connectors Supplied with Boot, Pin, Silicon Gel (Two Female Connectors Required) *

Cat. No.	Wire Range AWG	Female Disconnect Cat. No.	Colour Code	Dimensions in. (mm)			Body Size
				L	W	H	
5KVB00T-2L (connection pin for two female connectors included)	#8	MD8F-2	Red	4.50 (114.3)	2.25 (57.2)	1.44 (36.6)	2
	#6	MD6F-2	Blue				
	#4	MD4F-2	Grey				
	#2	MD2F-2	Brown				
	#1	MD1F-2	Green				
5KVB00T-3L (connection pin for two female connectors included)	#2	MD2F-3	Brown	4.50 (114.3)	2.25 (57.2)	1.44 (36.6)	3
	#1	MD1F-3	Green				
	1/0	MD10F-3	Pink				
	2/0	MD20F-3	Black				
	3/0	MD30F-3	Orange				
	4/0	MD40F-3	Purple				

CSA and UL non applicable.
* Male pin supplied will fit all ranges and combinations of wire sizes per body size.

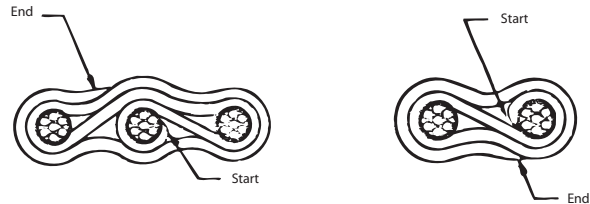
Sealing for motor-disconnect boots

Sealant



Technical Specifications

- Description: Polybutene Compound
- Application Temperature: 4°C to 38°C (40°F to 100°F)
- Service Temperature: -40°C to 82°C (-40°F to 180°F)
- Dimensions: Width 1 in., Thickness 1/8 in., Length (std. roll) 10 ft, wrapped on release liner
- Environmental Resistance: Resists normal aging process
- Chemical Resistance: Resists acids, bases and alcohols
- Dielectric Strength: 200 V/mil minimum
- Volume Resistivity: 1013 ohms/cm
- Flame Retardancy: Passed VO Vertical Flame Test



Sealant should be used with T&B motor-disconnect boots: MDBOOT-0, MDBOOT-1, MDBOOT-2 and MDBOOT-3.

The cable should be clean and free of grease and other foreign substances. Apply two layers around each cable at the same distance from the connector. Slide the assembly into boot, apply Ty-Rap® cable ties and work sealant around wires at end of boot to eliminate voids.

Cat. No.	Description
MDBOOT-SEAL	Sealant

For watertight applications, consult your Regional Sales Office for informations.

Silicone Lubricant for High Voltage Electrical Work



Cat. No.	Size	Std. Pkg.
2015	5 grams	100 envelopes
SL5	5 oz./142 grams	12 tubes