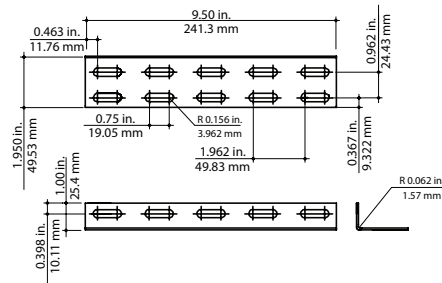


Accessories

Wall Termination / Universal Blind End



Dimensions



Support and terminate runs of cable tray with this wall termination angle. Can be used as a wall support, floor to ceiling support or to safely terminate any tray run. Adapts to any configuration and any width. Available in pregalvanized steel. Mounting hardware sold separately.

EXPRESS TIP

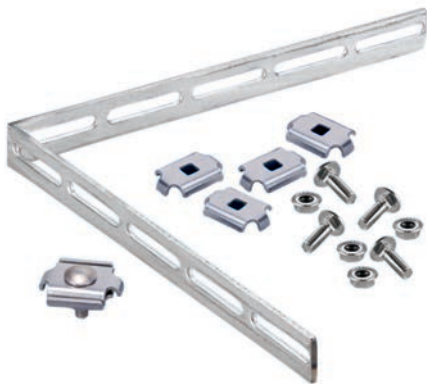
Refer to page B51 for an application example.



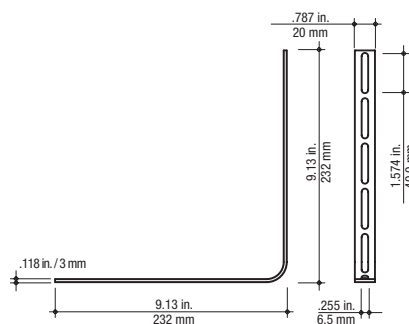
Tool required: 10mm nut driver

Cat. No.	Material	Weight	
		lb./ea.	kg/ea.
ETA-WTA-PG	Pregalvanized Steel	0.36	0.17

90 Degree Bracket



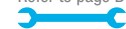
Dimensions



Create high strength tee, cross and other 90 degree configurations with this 90 degree bracket. Available in hot-dipped galvanized steel either as a single bracket or a kit including one (1) bracket, four (4) bracket clamps and one (1) hot-dipped galvanized universal splice.

EXPRESS TIP

Refer to page B42 for an application example.



Tool required: 10mm nut driver

Cat. No.	Description	Weight	
		lb./ea.	kg/ea.
ETA-H90-HD	Single 90 Degree Bracket	0.51	0.23
ETA-H90KIT-HD	90 Degree Bracket Kit*	0.69	0.31

* Kit includes — 1 90° bracket (ETA-H90-HD), 4 bracket clamps (ETH-WBC-HD) and 1 universal splice (ETH-SP-HD)

Accessories

Cable Drop-Out



Dimensions

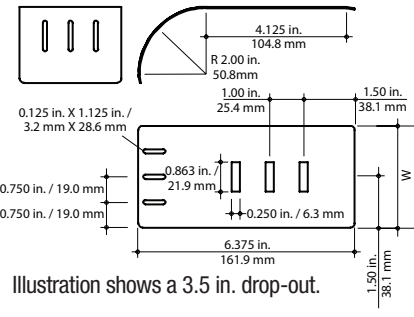


Illustration shows a 3.5 in. drop-out.

This 2 in. radius cable drop-out protects cables when exiting or entering tray by reducing the strain on the cables. The drop-out attaches to tray with built-in tabs. No hardware is required. Three different widths available in pregalvanized steel. This drop-out is suitable for use with all tray widths and heights.

EXPRESS TIP

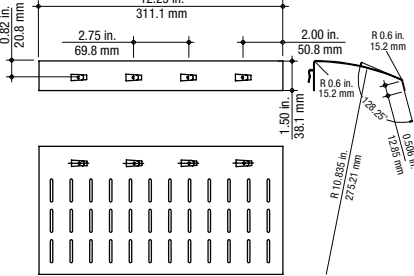
Refer to page B43 for application examples.

Cat. No.	Material	Width (W)		Weight	
		in.	mm	lb./ea.	kg/ea.
ETA-CD0U17-PG	Pregalvanized Steel	1.75	45	0.16	0.07
ETA-CD0U35-PG		3.50	90	0.31	0.14
ETA-CD0U52-PG		5.25	135	0.49	0.22

Large Cable Drop-Out



Dimensions



For larger cable tray widths and heavier cable loading, use the 7 in. radius large cable drop-out to protect cable exiting or entering tray runs. Available in pregalvanized steel, the large cable drop-out has a versatile slotted design that enables the use of Ty-Rap® cable ties to attach the cable bundles to the drop-out.

Use built-in tabs to attach to siderails or universal clamp (see page B25) to attach to the end of cable runs.

EXPRESS TIP

Refer to page B43 for an application example.

Cat. No.	Material	Weight	
		lb./ea.	kg/ea.
ETA-CD0UL-PG	Pregalvanized Steel	0.90	0.40

Accessories

Side Hanger Clamp

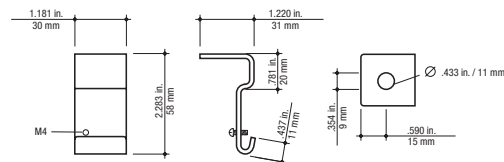


The side hanger clamp is used to construct trapeze supports using threaded rods. The offset support hole allows for trouble-free access to support nuts for height adjustment and the rod can continue downward to allow for multi-level (tiered) trapeze installations. A set screw holds tray firmly in position once installation is complete. Available in pregalvanized steel. For use with 3/8 in. threaded rod.

EXPRESS TIP

Refer to page B47 for an application example.

Dimensions



Cat. No.	Material	Weight	
		lb./ea.	kg/ea.
ETH-SH-PG	Pregalvanized Steel	0.13	0.06
ETH-SH-HD	Hot-dipped Galvanized Steel		
ETH-SH-S6	Stainless Steel (Type 316)	0.13	0.06

Universal Clamp



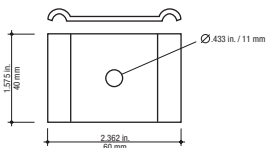
The universal clamp is used to secure large cable drop-outs to the end of a cable run as well as attaching bottom inserts to lengths of ExpressTray®.

EXPRESS TIP

Refer to pages B43 and B44 for application examples.

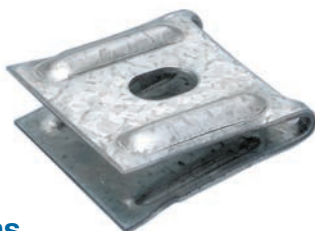
Note: To hold down 2 in. x 2 in. wire basket tray, use 1 ETH-UNIVC-XX with bottom half of ETH-SP-XX. See page B14.

Dimensions



Cat. No.	Material	Weight	
		lb./ea.	kg/ea.
ETH-UNIVC-PG	Pregalvanized Steel	0.09	0.04
ETH-UNIVC-HD	Hot-dipped Galvanized Steel		
ETH-UNIVC-S6	Stainless Steel (Type 316)		

Wall Clamp

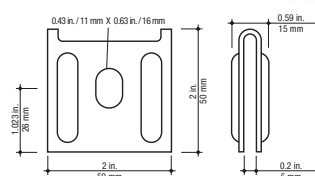


This wall clamp attaches the flange of U- and C-profile ExpressTray®, up to a maximum of 8 in. wide, to the wall surface. Available in pregalvanized steel and stainless steel.

EXPRESS TIP

Refer to page B50 for an application example.

Dimensions



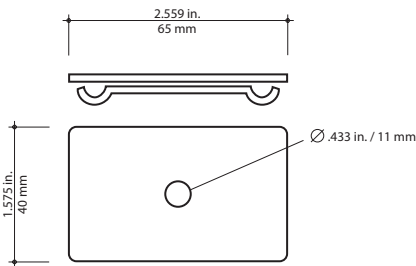
Cat. No.	Material	Weight	
		lb./ea.	kg/ea.
ETH-WC-PG	Pregalvanized Steel	0.18	0.08
ETH-WC-SS	Stainless Steel (Type 304)		

Accessories

Threaded Rod Clamp



Dimensions



This clamp is used for center-hung applications to secure tray sections to threaded rod for ceiling mounting and can be used with U-profile tray in 4 in., 8 in. and 12 in. widths. This clamp is not designed for use with C-profile tray. Available in pregalvanized steel, hot-dipped galvanized steel and stainless steel (Type 316). For use with 3/8 in. threaded rod.

EXPRESS
TIP

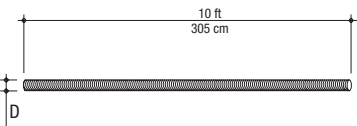
Refer to page B46 for application examples.

Cat. No.	Material	Weight	
		lb./ea.	kg/ea.
ETH-CHC-PG	Pregalvanized Steel	0.18	0.08
ETH-CHC-HD	Hot-dipped galvanized Steel		
ETH-CHC-S6	Stainless Steel (Type 316)		

Superstrut® Threaded Rod



Dimensions



Used for overhead mounting of ExpressTray® with threaded rod clamp, side hanger clamps or strut. Available in 1/4 in. and 3/8 in. diameters, threaded rods are made of electro-galvanized steel.

EXPRESS
TIP

Refer to pages B45, B46 and B47 for application examples.

Order nut and washer separately.
(See page B32).

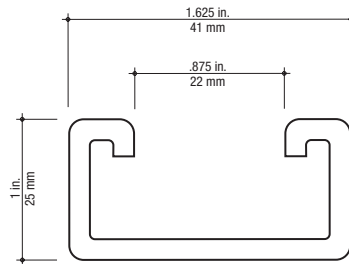
Cat. No.	Thread per in.	Size (D)	Weight	
			lb./ea.	kg/ea.
H104-1/4X10EGC	20	1/4 in. dia.	2.7	1.22
H104-3/8X10EGC	16	3/8 in. dia.	2.9	1.32

Accessories

Superstrut® (Metal Framing Channel)



Dimensions



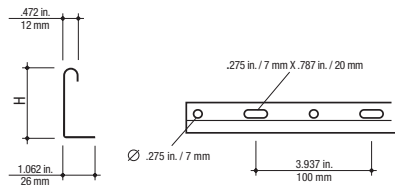
Superstrut® metal framing channel is sold in 10-foot lengths and the standard finish is pregalvanized steel. Various finishes and configurations are available, contact your Regional Sales Office for further information.

Cat. No.	Material	Weight	
		lb./ea.	kg/ea.
D120010PG	Pregalvanized Steel	7.28	3.30

Barrier Strip



Dimensions



Used to separate bundles of power, communication and data cables. Barrier strips are sold in standard 10-foot lengths and are available in 1-3/4 in. and 3-3/8 in. heights. Available in pregalvanized steel, hot-dipped galvanized and stainless steel (304 and 316).

For use with barrier strip connector and barrier strip clamp both sold separately on page B28.

Each 10 foot barrier strip should be secured by three barrier strip clamps one on each end and one in the middle.

EXPRESS TIP

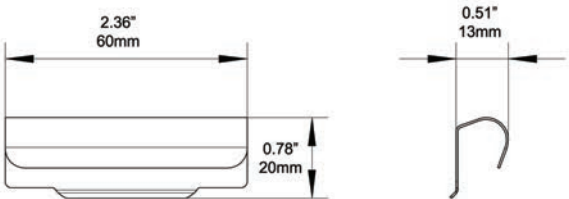
Refer to page B54 for an application example.

Cat. No.	Material	Height (H)		Weight	
		in.	mm	lb./ea.	kg/ea.
ET-BS175-PG	Pregalvanized Steel	1.750	45	3.15	1.40
ET-BS175-HD	Hot-dipped galvanized Steel			3.30	
ET-BS175-SS	Stainless Steel (Type 304)			1.03	0.468
ET-BS175-S6	Stainless Steel (Type 316)	3.375	85	3.15	2.11
ET-BS338-PG	Pregalvanized Steel				
ET-BS338-HD	Hot-dipped galvanized Steel				
ET-BS338-SS	Stainless Steel (Type 304)				

Accessories

Barrier Strip Connector

Dimensions



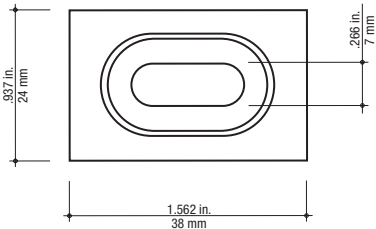
This connector is used to connect lengths of barrier strips and is available in two sizes for use with 1-3/4 in. and 3-3/8 in. barrier strips.

Cat. No.	Material	Weight	
		lb./ea.	kg/ea.
ET-BSH-UNIV-SS	Stainless Steel	0.02	0.01

Barrier Strip Clamp



Dimensions



The barrier strip clamp is used to mount barrier strips to ExpressTray® profiles. Available in electrogalvanized steel, hot-dipped galvanized steel and stainless steel (304 and 316).

EXPRESS TIP

Refer to page B54 for an application example.

Cat. No.	Material	Weight	
		lb./ea.	kg/ea.
ETH-BSC-EG	Electrogalvanized Steel	0.04	0.02
ETH-BSC-HD	Hot-dipped galvanized Steel		
ETH-BSC-SS	Stainless Steel (Type 304)		
ETH-BSC-S6	Stainless Steel (Type 316)		

Accessories

Cover and Bottom Insert



ExpressTray® covers and bottom inserts protect cables from dust build-up and provide a physical barrier in environments where cables must be protected from machinery or vandalism.

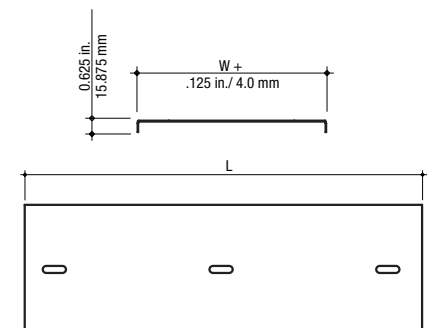
Attach bottoms to tray using universal clamps (see page B25) and secure covers using cover clips (see page B30).

Available in pregalvanized steel in widths from 2 in. to 24 in. Available in lengths of 120 in. or 40 in. Available in solid or vented design.

EXPRESS TIP

Refer to page B44 for an application example.

Dimensions



Solid Bottom Insert

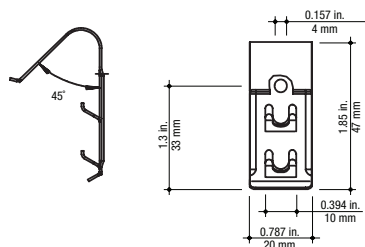
Description	Width (W)		Cat. No.	Weight		Cat. No.	Weight	
	in.	mm	Covers	lb./ea.	kg/ea.	Bottoms	lb./ea.	kg/ea.
Solid Covers and Bottoms 120 in. (3 meters) Length (L)	2	50	ETACOV02PG-120	1.59	0.72	ETABIS02PG-120	1.51	0.68
	4	100	ETACOV04PG-120	2.03	0.92	ETABIS04PG-120	1.93	0.87
	6	150	ETACOV06PG-120	2.45	1.11	ETABIS06PG-120	2.33	1.05
	8	200	ETACOV08PG-120	4.19	1.90	ETABIS08PG-120	3.98	1.81
	12	300	ETACOV12PG-120	5.91	2.68	ETABIS12PG-120	5.61	2.55
	16	400	ETACOV16PG-120	7.65	3.47	ETABIS16PG-120	7.27	3.30
	18	450	ETACOV18PG-120	8.42	3.82	ETABIS18PG-120	8.00	3.63
	20	500	ETACOV20PG-120	9.39	4.26	ETABIS20PG-120	8.92	4.05
	24	600	ETACOV24PG-120	11.11	5.04	ETABIS24PG-120	10.55	4.79
Solid Covers and Bottoms 40 in. (1 meter) Length (L)	2	50	ETACOV02PG-40	0.53	0.24	ETABIS02PG-40	0.50	0.23
	4	100	ETACOV04PG-40	0.68	0.31	ETABIS04PG-40	0.64	0.29
	6	150	ETACOV06PG-40	0.82	0.37	ETABIS06PG-40	0.78	0.35
	8	200	ETACOV08PG-40	1.40	0.63	ETABIS08PG-40	1.33	0.60
	12	300	ETACOV12PG-40	1.97	0.89	ETABIS12PG-40	1.87	0.85
	16	400	ETACOV16PG-40	2.55	1.16	ETABIS16PG-40	2.42	1.10
	18	450	ETACOV18PG-40	2.81	1.27	ETABIS18PG-40	2.67	1.21
	20	500	ETACOV20PG-40	3.13	1.42	ETABIS20PG-40	2.97	1.35
	24	600	ETACOV24PG-40	3.70	1.68	ETABIS24PG-40	3.52	1.6
Vented Covers and Bottoms 120 in. (3 meters) Length (L)	2	50	ETACOVV02PG-120	1.54	0.70	ETABIV02PG-120	1.47	0.66
	4	100	ETACOVV04PG-120	1.97	0.89	ETABIV04PG-120	1.87	0.85
	6	150	ETACOVV06PG-120	2.38	1.08	ETABIV06PG-120	2.26	1.02
	8	200	ETACOVV08PG-120	4.06	1.84	ETABIV08PG-120	3.86	1.75
	12	300	ETACOVV12PG-120	5.73	2.60	ETABIV12PG-120	5.45	2.47
	16	400	ETACOVV16PG-120	7.42	3.37	ETABIV16PG-120	7.05	3.20
	18	450	ETACOVV18PG-120	8.17	3.71	ETABIV18PG-120	7.76	3.52
	20	500	ETACOVV20PG-120	9.11	4.13	ETABIV20PG-120	8.65	3.93
	24	600	ETACOVV24PG-120	10.78	4.89	ETABIV24PG-120	10.24	4.64
Vented Covers and Bottoms 40 in. (1 meter) Length (L)	2	50	ETACOVV02PG-40	0.51	0.23	ETABIV02PG-40	0.49	0.22
	4	100	ETACOVV04PG-40	0.66	0.30	ETABIV04PG-40	0.62	0.28
	6	150	ETACOVV06PG-40	0.79	0.36	ETABIV06PG-40	0.75	0.34
	8	200	ETACOVV08PG-40	1.35	0.61	ETABIV08PG-40	1.29	0.58
	12	300	ETACOVV12PG-40	1.91	0.87	ETABIV12PG-40	1.82	0.82
	16	400	ETACOVV16PG-40	2.47	1.12	ETABIV16PG-40	2.35	1.07
	18	450	ETACOVV18PG-40	2.72	1.24	ETABIV18PG-40	2.59	1.17
	20	500	ETACOVV20PG-40	3.04	1.38	ETABIV20PG-40	2.88	1.31
	24	600	ETACOVV24PG-40	3.59	1.63	ETABIV24PG-40	3.41	1.55

Accessories

Cover Clip



Dimensions



Secure covers to tray quickly with this cover clip. Available in stainless steel (type 301), the cover clip uses built-in tabs to secure the cover and to facilitate removal of the cover when required. No tools required.

EXPRESS TIP

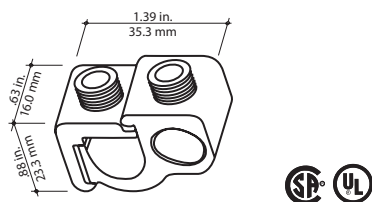
Refer to page B44 for an application example.

Cat. No.	Material	Weight	
		lb./ea	kg/ea.
ETA-CC-S6	Stainless Steel (Type 301)	0.10	0.008

Blackburn® Grounding Connector



Dimensions



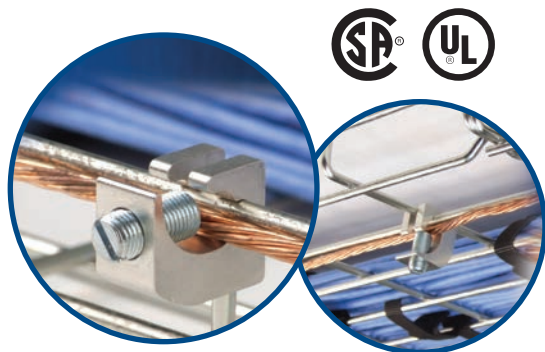
Note: To ensure electrical continuity, the Blackburn® GPT-2 grounding connector and ground wire **MUST** be used in all QuikLok® Series tray applications.

The GPT-2 grounding connector is used for bonding applications not exceeding 300 A (as per Table 16 of CEC) and is ideal for conductors #14 to #4 AWG.

Applications requiring larger conductors, contact your Regional Sales Office for further information.

Cat. No.	Conductor Range	Weight	
		lb./ea	kg/ea.
GPT-2	#14-#4 AWG	0.06	0.03

ETG Lay-In Ground Lug



E T G 2 4 - L L 2 1 4

ExpressTray® Ground 2 po through 4 po depth Lay in Lug #2 AWG through #14 AWG

- Lay in lug design easily installs onto any ExpressTray® 2 in. through 4 in. deep without any disassembly required.
- Approved for steel and stainless steel wire mesh trays.
- Accepts 12 AWG solid through 2 AWG stranded aluminum and 14 AWG solid/stranded through 2 AWG stranded copper conductors.
- “Slotted hook” design sits securely onto the ExpressTray® mesh intersections to restrict swiveling.
- Must be used on each length of QuikLok® Series tray applications to meet CSA requirements.

Accessories

Superstrut® “Bat” Clip

Attaches ExpressTray® to Strut



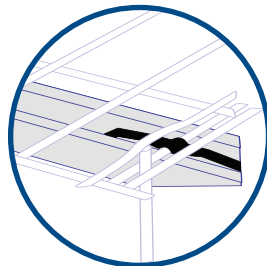
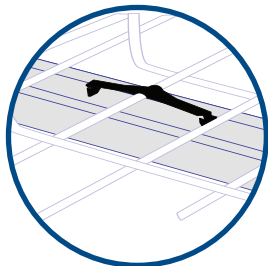
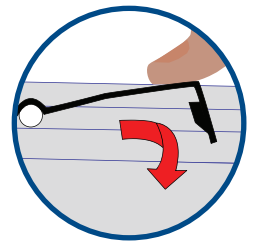
Specifications

- One piece construction
- No installation tools required
- Reduces installation time to the minimum
- For horizontal applications



N° de cat.	Material	Weight	
		lb./100	kg/100.
SSF-CK535	Spring Steel with zinc phosphate finish (black)	1.20	0.55

Note: “BAT” Clip should be used for horizontal tray/strut applications. For vertical tray/strut applications, the universal clamp (page B25) should be used to clamp ExpressTray® to strut using a bolt and spring nut (page B32).



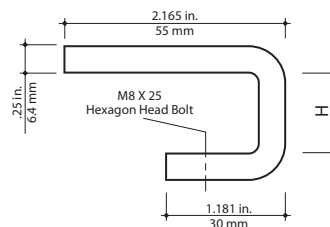
Position “BAT” Clip on outer wires of tray and opposing sides of the strut flanges

To install, just hook one wing under the strut flange and push down the other wing with your thumb to slip it under the strut flange.

Beam Clamp



Dimensions



This clamp is used primarily to attach L-profile ExpressTray® to steel beams. It can also be used to attach U- and C-profiles onto structural steel. Available in 3/4 in. and 1-1/8 in. sizes in hot-dipped galvanized steel.

EXPRESS TIP

Refer to page B54 for an application example

Cat. No.	Height (H)		Weight	
	in.	mm	lb./ea	kg/ea.
ETH-IBC3/4-HD	0.787	20	0.48	0.22
ETH-IBC1-HD	1.181	30	0.53	0.24

Accessories

End Caps



Protective cap for attachment to cut wire ends of mesh cable tray.

Cat. No.	Cable Tray Application	Material	Weight	
			lb./per 100 pcs	kg/per 100 pcs
ETA-EPC-6	ETU6*	Polyethylene	0.08	0.36
ETA-EPC-4	ETQ4*		0.66	0.29

Superstrut® Hexagonal Nut



For use with Superstrut® threaded rod. Available in two sizes, 1/4 in. and 3/8 in., in electro-galvanized steel.

Cat. No.	Size	Weight	
		lb./ea.	kg/ea.
E145-1/4EGC	1/4 in. hex nut	0.01	0.004
E145-3/8EGC	3/8 in. hex nut		

Superstrut® Flat Washer



For use with Superstrut® threaded rod and hex nut. Available in 1/4 in. and 3/8 in. sizes, in electrogalvanized steel.

Cat. No.	Size	Weight	
		lb./ea.	kg/ea.
E147-1/4EGC	1/4 in. flat washer	0.01	0.004
E147-3/8EGC	3/8 in. flat washer	0.01	0.004

Superstrut® Short Spring Nut



For use with D-Series metal framing channel, spring nuts are offered in 1/4 in. and 3/8 in. sizes in electrogalvanized steel.

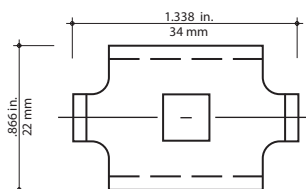
Cat. No.	Size	Weight	
		lb./ea.	kg/ea.
B100-1/4EGC	1/4 in. short spring nut	0.01	0.004
B100-3/8EGC	3/8 in. short spring nut	0.01	0.004

Accessories

Bracket Clamp



Dimensions



The bracket clamp is used for mounting tray to wall brackets or suspended support brackets and is compatible with all tray profiles. Available in electro-galvanized steel, pregalvanized steel, hot-dipped galvanized steel and stainless steel (304 or 316).

EXPRESS TIP

Refer to pages B48, B49 and B51 for application examples.



Tool required: 10mm nut driver

Cat. No.	Material	Weight	
		lb./ea.	kg/ea.
ETH-WBC-EG	Electrogalvanized Steel	0.09	0.02
ETH-WBC-HD	Hot-dipped galvanized Steel		
ETH-WBC-SS	Stainless Steel (Type 304)		
ETH-WBC-S6	Stainless Steel (Type 316)		

Standard Bolting Kit



The standard bolting kit consists of an M6 x 12mm carriage bolt and capture nut. Available in electro-galvanized steel, hot-dipped galvanized steel and stainless steel (304 and 316).



Tool required: 10mm nut driver

Cat. No.	Material	Weight	
		lb./ea.	kg/ea.
ETH-KIT0-EG	Electrogalvanized Steel	0.02	0.01
ETH-KIT0-HD	Hot-dipped galvanized Steel		
ETH-KIT0-SS	Stainless Steel (Type 304)		
ETH-KIT0-S6	Stainless Steel (Type 316)		

Accessories

Nested “J” or “L” Bracket Bolting Kit

For use with “J” and “L” brackets, this bracket bolting kit consists of an M10 x 25mm carriage bolt and capture nut. Available in hot-dipped galvanized steel.



EXPRESS TIP

Refer to page B49 for an application example.



Tool required: 17mm nut driver

Cat. No.	Material	Weight	
		lb./ea.	kg/ea.
ETH-KIT1-HD	Hot-dipped galvanized Steel	0.09	0.04

Back-to-Back Bracket Bolting Kit



For use in back-to-back bracket configurations or for use with “L” brackets, this bracket bolting kit consists of an hexagonal M10 x 60mm bolt, a flat washer, a lock washer and a nut. Available in hot-dipped galvanized steel.

EXPRESS TIP

Refer to page B49 for an application example.



Tool required: 17mm nut driver

Cat. No.	Material	Weight	
		lb./ea.	kg/ea.
ETH-KIT2-HD	Hot-dipped galvanized Steel	0.13	0.06

Spacers



The spacer is used to prevent spreading of the bracket profile during installation. Spacers can be used with both “L” and “J” brackets in both single and back-to-back configurations. Available in pregalvanized and hot-dipped galvanized steel.

EXPRESS TIP

Refer to pages B48 and B49 for application examples.

Cat. No.	Material	Weight	
		lb./ea.	kg/ea.
ETH-S-PG	Pregalvanized Steel	0.09	0.04
ETH-S-HD	Hot-dipped galvanized Steel		