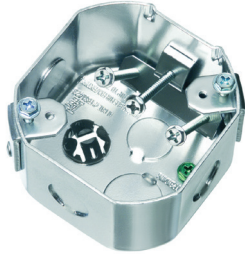


## Steel ONE-BOX™

Designed for new construction or retrofit, side-mounts to a joist for a super secure, fan-rated installation - with no wobble.



### FEATURES AND BENEFITS

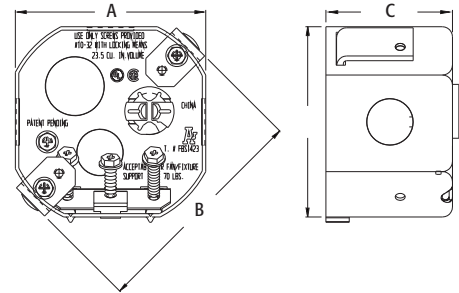
- Fast, easy installation.
- Tabs for 1/2" positioning
- Installation screws ship captive
- Installed NM cable connector
- Two # 10 thread holes, including screws for fan
- Two # 8 thread holes, including screws for fixtures.
- UL rated 70 lb. fan/fixture; cUL rated 50 lb. fan/fixture

CATALOG NUMBER	UPC/DCI/NAED MFG #018997	DESCRIPTION/STYLE	UNIT PKG	STD PKG	DIM A	DIM B	DIM C
FBS1423	76190	2-3/8" Box Depth / 23.0 Cu. In.	10	10	3.572	4.250	2.375

Mounts on Side of Joist.

Refer to chart on page R-18 for load ratings and number of single conductors.

PATENTED.



### NEW CONSTRUCTION



### RETROFIT

