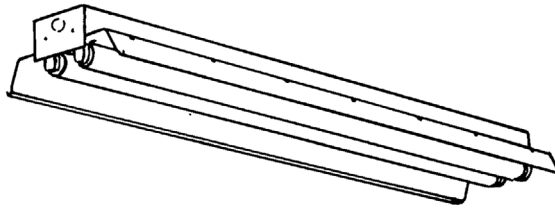


PHILIPS
Day-Brite
CFI

Industrial

IA all purpose

T5, T5HO, or T8



Project: _____
 Location: _____
 Cat.No: _____
 Type: _____
 Lamps: _____ Qty: _____
 Notes: _____

The Philips Day-Brite / Philips CFI all purpose industrial is an industrial luminaire available with or without uplight at a economical price.

Ordering guide

Example: IA232-1/2-EB

Family	No. of Lamps per Cross Section	Lamp Type	Voltage	Options
<input type="text"/>	<input type="text" value="2"/>	<input type="text"/> -	<input type="text"/> -	<input type="text"/>
IA Industrial w/ uplight	(not included)	28 28WT5 (46")	UNV Universal voltage	1/2 One 2-lamp ballast
TIA Tandem Unit w/uplight	2	32 32WT8 (48")	120/277V	1/4 One 4-lamp ballast
IS Solid Top Reflector		54HO 54WT5HO (46")	120 120V	2/2 Two 2-lamp ballasts
TIS Tandem Unit w/solid top			277 277V	EB Electronic ballast, <10% THD
			347 347V	EB10R T8 electronic ballast, program rapid start, <10% THD
				EBHE T8 electronic ballast, high efficiency, std. ballast factor
				EBLHE T8 electronic ballast, high efficiency, low ballast factor
				EBHHE T8 electronic ballast, high efficiency, high ballast factor
				LT20 -20°F start option (T8, use in conjunction with ballast option)
				E1 B100 emerg. ballast, T8, 350-450 lumens, 120/277V
				E1CAN B100-CAN emerg. ballast, Canada market, T8, 350-450 lumens, 120/347V
				E7 B60 emerg. ballast, T8, 600-700 lumens, 120/277V
				E5 B50 emerg. ballast, U.S. or Canada market, T8, 1100-1400 lumens, UNV
				ESCAN B50-CAN emerg. ballast, Canada market, T8, 1100-1400 lumens, 120/347V
				ESST B50ST emerg. ballast w/self test, U.S. or Canada market, T8, 1100-1400 lumens, UNV
				E7LP LP550 emerg. ballast T5/T5HO, 430-700 lumens, 120/277V
				E6LP LP600 emerg. ballast U.S. or Canada market, T5/T5HO, 750-1325 lumens, 120/277V
				GLR Fusing, fast blow

Accessories (order separately)

- **CS-400** Rigid canopy
- **CS-500** 42" top swivel canopy
- **CS-12** 12" Stem
- **CS-18** 18" Stem
- **CS-24** 24" Stem
- **CS-30** 30" Stem
- **CS-36** 36" Stem
- **CS-48** 48" Stem
- **CTBH-1** T-bar sliding hanger, flush mount
- **CTBH-2** T-bar sliding hanger, 1-1/2" spacing
- **FKR-126** Chain hanger set
- **N-3381** Universal joint aligner, octagonal box, 3/4" I.P.S.
- **TH-1** Sliding hanger, flush mounting
- **TH-2** Sliding hanger, 1-1/2" spacing except T12HO/VHO
- **TC-1** Heavy duty coupler
- **FKR-173** 4' Wire guard (use 2 for 8')

See section 1600-OA for option info. and 950-SS for mounting hardware. Power Connect modular wiring available, see sheet 1604-OA for details



IA All purpose industrial

T5, T5HO, or T8

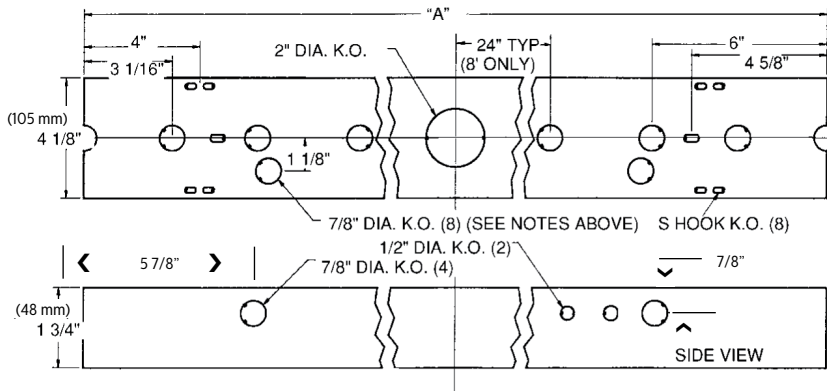
Construction/Finish

- Reflectors feature reinforcing forms and are painted with high reflectance baked white enamel finish.
- Multiple knockouts for convenient installation.
- Heavy duty channel of code gauge die formed steel with baked white enamel finish.
- Reflectors are easily installed and have up-light construction standard. Solid top reflectors are available.
- Combination end cap/coupler requires no tools for installation.
- 1/4 turn reflector fastener requires no tools.
- Suitable for unit or row, direct or suspension mounting.

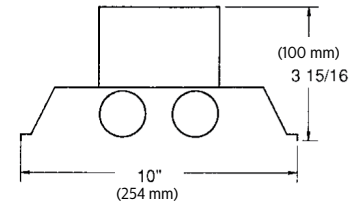
Electrical

- cULus listed for direct mounting on low density ceilings and damp locations.
- Self-contained fluorescent emergency power packs can be incorporated.

Dimensions



DIM "A"		
4' CHANNEL	(1219 mm)	48"
8' CHANNEL	(2438 mm)	96"



IA All purpose industrial

T5, T5HO, or T8

Photometry

IA all purpose industrial, 4' 2 Lamp 32WT8

Efficiency – 86.6%

LER – FI-76

TER – 46

Catalog No.	IA232-1/2-EB	Candlepower				Light Distribution				Average Luminance				
		Angle	End	45	Cross	Degrees	Lumens	% Lamp	% Luminaire	Angle	End	45'	Cross	
Test No.	42321	0	1310	1310	1310	0-30	1065	18.4	21.2	45	3870	4886	5562	
S/MH	1.5	5	1312	1307	1306	0-40	1804	31.1	35.9	55	3684	5392	6232	
Lamp Type	F32T8	15	1263	1288	1314	0-60	3493	60.2	69.5	65	3338	5991	6952	
Lumens/Lamp	2900	25	1169	1249	1317	0-90	4848	83.6	96.5	75	2725	6400	6023	
Ballast Factor	.92	35	1039	1186	1295	90-180	176	3.0	3.5	85	1337	2891	1445	
Input Watts	61	45	869	1097	1249	0-180	5024	86.6	100.0					
		55	671	982	1135	Coefficients of Utilization								
		65	448	804	933	EFFECTIVE FLOOR CAVITY REFLECTANCE 20 PER (pfc=0.20)								
		75	224	526	495	pcc		80		70		50		
		85	37	80	40	pw		70	50	30	70	50	30	
		95	0	12	4	RCR								
		105	0	42	46	0	102	102	102	100	100	100	94	94
		115	0	75	79	1	92	88	83	90	85	81	81	78
		125	0	59	108	2	82	75	68	81	72	68	69	65
		135	0	10	76	3	75	65	57	72	64	56	60	55
		145	0	1	12	4	68	56	48	66	56	47	53	46
		155	0	1	2	5	63	51	41	59	50	41	46	40
		165	0	0	1	6	57	45	36	56	44	36	41	35
		175	0	0	0	7	53	40	33	51	40	32	38	32
						8	48	36	28	47	35	28	34	28
						9	46	34	26	45	33	26	32	26
						10	42	30	23	41	30	23	28	23

Comparative yearly lighting energy cost per 1000 lumens – \$3.16 based on 3000 hrs. and \$.08 pwr KWH.

The photometric results were obtained in the Philips Day-Brite laboratory which is NVLAP accredited by the National Institute of Standards and Technology.



Some luminaires use fluorescent or high intensity discharge (HID) lamps that contain small amounts of mercury. Such lamps are labeled, "Contain Mercury" and/or the symbol "HG". Lamps that contain mercury must be disposed of in accordance with local requirements. Information regarding lamp recycling and disposal can be found at www.lamprecycle.org

© 2016 Philips Lighting Holding B.V. All rights reserved. Philips reserves the right to make changes in specifications and/or to discontinue any product at any time without notice or obligation and will not be liable for any consequences resulting from the use of this publication. philips.com/luminaires



Philips Lighting North America Corporation
200 Franklin Square Drive, Somerset, NJ 08873
Tel. 855-486-2216

Philips Lighting Canada Ltd.
281 Hillmount Rd, Markham, ON, Canada L6C 2S3
Tel. 800-668-9008