

2', 3', 4', 6', or 8'
1 or 2 Lamp
T8 or T12

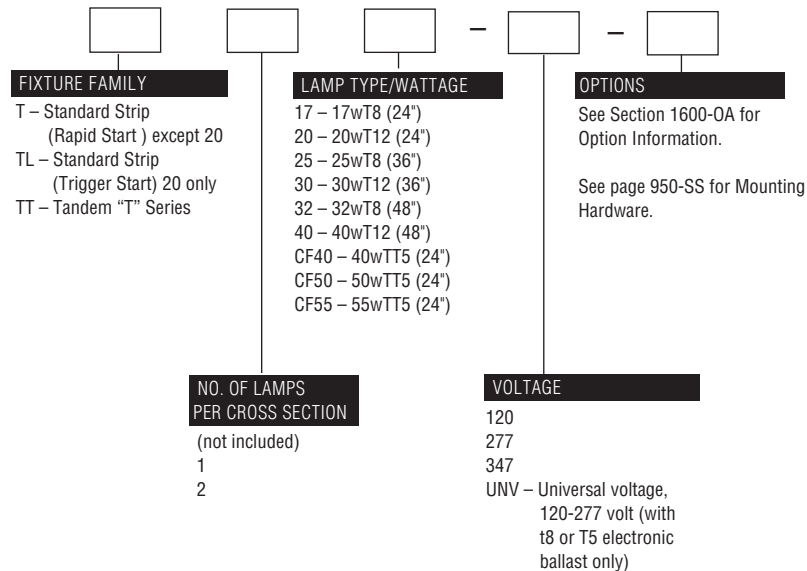
CONSTRUCTION/FINISH

- Luminaires suitable for unit, row, surface, or suspension mounting.
- Multiple knockouts for convenient installation.
- Heavy duty channel of code gauge die formed steel.
- High reflectance white baked enamel finish.
- Quarter turn latch secures channel cover for easy wireway access.
- See page 1119-S for strip reflectors.

ELECTRICAL

- UL listed for direct mounting on low density ceilings and damp locations.
- Class P, HPF, CBM certified ballasts comply with © Federal Ballast Law (Public Law 100-357,1988).
- Green grounding screw installed in channel.
- Lampholders may be individually replaced or rewired.

CATALOG NUMBER



NOTES:

- With generic Electronic Ballasts (Brand selected by Day-Brite)
Suffix Catalog # with Ballast Quantity - / EB Lamps Per Ballast.

Example: -1/2-EB = One 2 Lamp Electronic Ballast.

Example: -1/4-EB = One 4 Lamp Electronic Ballast (Available for T8 only)

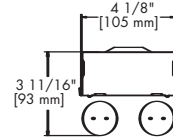
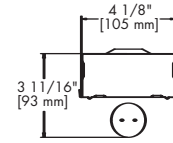
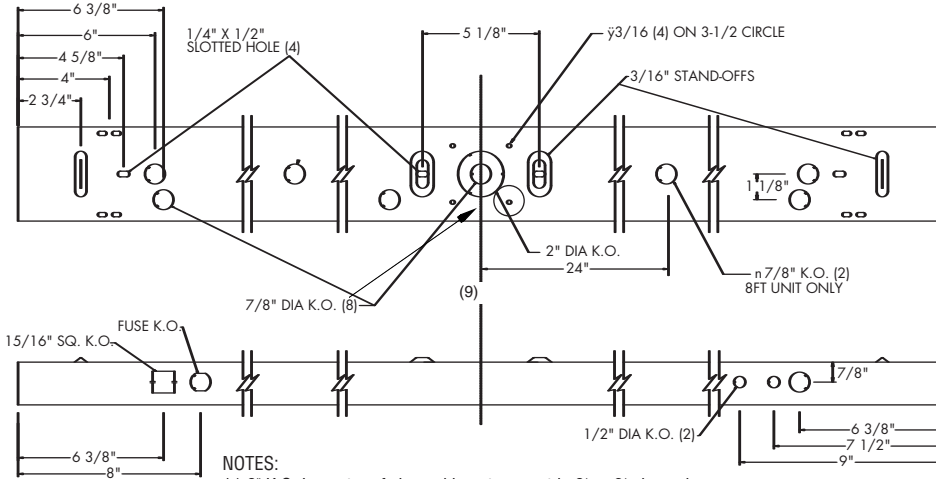
STANDARD STRIP



DIMENSIONS

NOTE: 2' & 3' MODELS INCLUDE ONLY OUTBOARD DETAILS

DIM "A"	Inches	(mm)
2' CHANNEL	24"	(610 mm)
3' CHANNEL	36"	(914 mm)
4' CHANNEL	48"	(1219 mm)
6' CHANNEL	72"	(1829 mm)
8' CHANNEL	96"	(2438 mm)



PHOTOMETRIC DATA

CATALOG # T240
TEST #13900-1

S/MH=1.6

LAMPS = F40
BALLAST = ESB

INPUT WATTS = 84
BALLAST FACTOR = .94

LER = FS-66

COMPARATIVE YEARLY LIGHTING ENERGY COST PER 1000 LUMENS = \$3.64 BASED ON 3000 HRS. AND \$.08 PER KWH.

FIXTURE EFFICIENCY= 93.4%

CANDLEPOWER				
Angle	End	45	Cross	
0	1067	1067	1067	
5	1061	1068	1071	
15	1021	1074	1102	
25	942	1061	1125	
35	828	1025	1127	
45	685	964	1091	
55	515	865	1017	
65	331	739	882	
75	155	571	722	
85	26	359	494	
95	0	348	502	
105	0	306	461	
115	1	225	399	
125	0	174	324	
135	3	135	245	
145	3	88	168	
155	6	48	96	
165	7	14	33	
175	7	5	8	

MAINTAINED ILLUMINATION TABLE- Square Feet/Fixture*						
<ul style="list-style-type: none"> 50-50-20 Reflectances (Ceiling-Wall-Floor) LLF = 0.74 3050 Lumens/Lamp Medium Dirt Room width divided by room height = 5 or more, 2 or 1 						
Fixture Size & # of Lamps	Room Width Room Height =	Approx. Area (sq. ft.) per Fixture				
		10 ft-c	30 ft-c	50 ft-c	70 ft-c	100 ft-c
4' 2-Lamp	5	339	112	68	47	33
	2	220	73	44	31	-
	1	156	52	31	-	-

COEFFICIENT OF UTILIZATION									
pc	20			70			50		
pcc	80	70	50	80	70	50	80	70	50
pw	70	50	30	70	50	30	70	50	30
RCR	1	95	90	85	90	86	82	78	75
2	85	77	70	81	74	67	67	62	62
3	77	67	59	73	64	57	59	52	52
4	70	59	50	67	56	48	51	45	45
5	64	51	43	61	49	41	45	38	38
6	58	46	37	55	44	36	40	33	33
7	54	41	32	51	39	31	36	29	29
8	49	36	28	47	35	27	32	25	25
9	45	33	25	43	31	24	29	22	22
10	42	30	22	40	28	21	26	20	20

LIGHT LOSS FACTOR DATA	
LLF = 0.74 HPF Ballast	LLF = LDD X LLD X BF
LLF = 0.43 LPF Ballast	LDD = Clean 0.93 Medium 0.89
LLF = Light Loss Factor	Dirty 0.85
LDD = Luminaire Dirt Depreciation	LLD = 0.88 @ 40% Rated Lamp Life
IES Category I Clean Annually	BF = 0.94 HPF Ballast
LLD = Lamp Lumen Depreciation	= 0.55 LPF Ballast
BF = Ballast Factor (commercial)	Relamp @ 70% Lamp Life
ballast performance)	

LIGHT DISTRIBUTION			
DEGREES	LUMENS	% LAMP	% FIXTURE
0-30	889.	14.6	15.6
0-40	1519.	24.9	26.7
0-60	2973.	48.7	52.2
0-90	4541.	74.4	79.7
90-180	1154.	18.9	20.3
0-180	5695.	93.4	100.0

PHOTOMETRIC DATA

CATALOG # T232-1/2-EB
TEST #14719

S/MH=1.6

LAMPS = F32T8
BALLAST = ELECTRONIC

INPUT WATTS = 61
BALLAST FACTOR = .88

LER = FS-78

COMPARATIVE YEARLY LIGHTING ENERGY COST PER 1000 LUMENS = \$3.08 BASED ON 3000 HRS. AND \$.08 PER KWH.

FIXTURE EFFICIENCY= 93.3%

CANDLEPOWER				
Angle	End	45	Cross	
0	1019	1019	1019	
5	1015	1018	1019	
15	976	1009	1034	
25	901	990	1059	
35	793	958	1059	
45	656	898	1019	
55	494	800	956	
65	320	688	911	
75	154	590	718	
85	28	308	432	
95	2	325	452	
105	3	305	512	
115	2	230	379	
125	2	160	334	
135	6	104	236	
145	6	46	133	
155	7	5	42	
165	8	6	6	
175	9	5	6	

MAINTAINED ILLUMINATION TABLE- Square Feet/Fixture*						
<ul style="list-style-type: none"> 80-50-20 Reflectances (Ceiling-Wall-Floor) LLF = 0.75 2900 Lumens/Lamp Clean Room width divided by room height = 5 or more, 2 or 1 						
Fixture Size & # of Lamps	Room Width Room Height =	Approx. Area (sq. ft.) per Fixture				
		10 ft-c	30 ft-c	50 ft-c	70 ft-c	100 ft-c
2-Lamp 32 watt	5	-	130	78	56	39
	2	-	84	50	36	-
	1	-	59	36	-	-

COEFFICIENT OF UTILIZATION									
pc	20			70			50		
pcc	80	70	50	80	70	50	80	70	50
pw	70	50	30	70	50	30	70	50	30
RCR	0	107	107	107	102	102	102	93	93
1	94	89	83	90	84	81	78	73	73
2	84	76	68	80	72	66	66	60	60
3	77	66	56	71	63	55	56	51	51
4	69	56	48	66	55	46	50	42	42
5	64	51	41	59	48	40	44	36	36
6	57	45	36	55	42	34	40	33	33
7	54	40	32	51	39	30	35	28	28
8	50	36	28	46	35	28	33	26	26
9	46	34	26	44	32	25	29	23	23
10	44	30	23	40	29	23	28	20	20

AVERAGE LUMINANCE CD/SQ.M WITH 2900 LUMEN LAMPS			
ANGLE	END	45°	CROSS
45	6257	6389	6686
55	5693	6243	6738
65	4843	6152	7171
75	3551	6404	6627
85	1448	4423	5003

TYPICAL V.C.P.'s			
Room Size	Mounting Height		
	Lengthwise	Crosswise	
	8.5	10	8.5
30x30	22	27	16
40x40	19	22	14
60x30	23	26	19
60x60	17	19	13
100x100	17	18	12

LIGHT DISTRIBUTION			
DEGREES	LUMENS	% LAMP	% FIXTURE
0-30	839	14.5	15.5
0-40	1429	24.6	26.4
0-60	2793	48.1	51.6
0-90	4316	74.4	79.8
90-180	1094	18.9	20.2
0-180	5410	93.3	100.0

LLF = .75 LLF = LIGHT LOSS FACTOR LFF = LDD X LLD X BF LDD = VERY CLEAN 0.94 CLEAN 0.90
LLD = 0.91 @ 40% RATED LAMP LIFE BF = 0.88 ELECTRONIC BALLAST & T8 LAMP (RELAMP AT 70% LAMP LIFE)

1103.2-S

DAY-BRITE LIGHTING
776 South Green Street • Tupelo, Mississippi 38804 • PH: (662) 842-7212 • FAX: (662) 841-5501
CANADIAN DIVISION
189 Bullock Drive • Markham, Ontario L3P 1W4 • PH: (905) 294-9570 • FAX: (905) 294-9811

©2006 DAY-BRITE LIGHTING
DB 03-06
DAY-BRITE RESERVES THE RIGHT TO
MAKE CHANGES WITHOUT NOTICE.

