

## Barrier Strips

### Barrier Strips



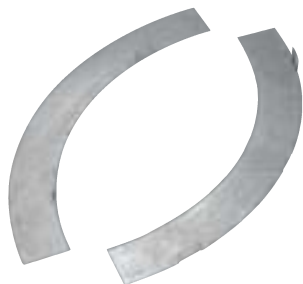
Aluminum barrier strips provide a method of separating cables in tray and trough systems. Easily installed using supplied hardware.

72 in. barriers are flexible for use with horizontal fittings.

Cat. No.	Designed for Siderail Height (in.)	Length
ABW-4-SBH-72	4	72 in.
ABW-5-SBH-72	5	
ABW-6-SBH-72	6	
ABW-7-SBH-72	7	
ABW-4-SB-(* )	4	144 in.
ABW-5-SB-(* )	5	3 m
ABW-6-SB-(* )	6	
ABW-7-SB-(* )	7	

NOTE: 72 in. barriers provided with 3 SPW10SCR.  
144 in., 3 m barriers provided with 6 SPW10SCR.  
(\* ) Insert length.

### Inside / Outside Vertical Bend Barriers

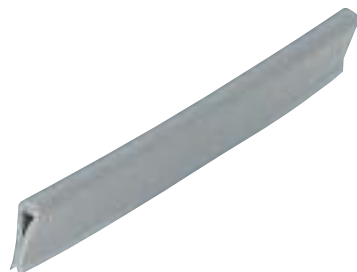


Preformed to fit all standard aluminum vertical bends. Provided with hardware.

Inside Bend Cat. No.	Outside Bend Cat. No.	Designed for Siderail Height (in.)
AUW(* )VIB-(* )-(+ )	AUW(* )VOB-(* )-(+ )	4
AUW(* )VIB-(* )-(+ )	AUW(* )VOB-(* )-(+ )	5
AUW(* )VIB-(* )-(+ )	AUW(* )VOB-(* )-(+ )	6
AUW(* )VIB-(* )-(+ )	AUW(* )VOB-(* )-(+ )	7
AHW(* )VIB-(* )-(+ )	AHW(* )VOB-(* )-(+ )	4
AHW(* )VIB-(* )-(+ )	AHW(* )VOB-(* )-(+ )	5
AHW(* )VIB-(* )-(+ )	AHW(* )VOB-(* )-(+ )	6
AHW(* )VIB-(* )-(+ )	AHW(* )VOB-(* )-(+ )	7

(\* ) Insert Bend Angle (+ ) Insert Bend Radius (\* ) Insert Siderail Height.

### Barrier Strip Splice



Alignment splice for joining connecting barrier strips.

Cat. No.	Material
ABW-BSS	Plastic

T&B aluminum cable tray is composed of two distinct systems H-Style and U-Style. These systems are interchangeable.