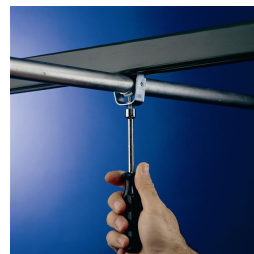
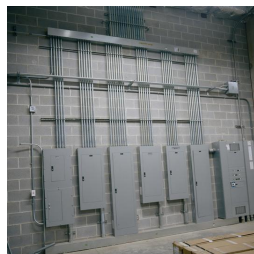
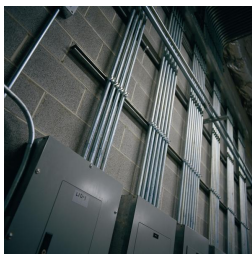
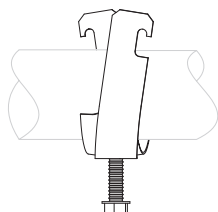
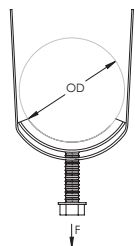


SCH2 Single Piece Strut Clamp for Cable/Conduit – SCH24B



- One-piece cable/conduit clamp with protective boot
- No screws or bolts to drop
- Requires only a screwdriver or nutdriver for installation
- Fits into open side of strut channel



Part Number	SCH24B
Material	Steel
Finish	Electrogalvanized
Outer Diameter (OD)	1.25" – 1.74"
EMT Conduit Size	1 1/2"
Rigid Conduit/Pipe Size	1 1/4"
Static Load (F)	350 lb
Certifications	cULus
Standard Packaging Quantity	50 pc
UPC	78285625227

UL, UR, cUL, cUR, cULus and cURus are registered certification marks of UL LLC.

WARNING

ERICO products shall be installed and used only as indicated in ERICO's product instruction sheets and training materials. Instruction sheets are available at www.erico.com and from your ERICO customer service representative. Improper installation, misuse, misapplication or other failure to completely follow ERICO's instructions and warnings may cause product malfunction, property damage, serious bodily injury and death.

Copyright © 2015 ERICO International Corporation. All rights reserved.

CADDY, CADWELD, CRITEC, ERICO, ERIFLEX, ERITECH, and LENTON are registered trademarks of ERICO International Corporation.

