

Circuit Breaker Enclosures

NEMA Type 4/4X

100-1200 Amperes
 240-600 Volts ac
 125-250 Volts dc

- UL Listed
- Suitable for use as service equipment
- 60°C/75°C conductor ratings
- Short circuit ratings are equal to the rating of the installed breaker.
- Spectra® RMS breakers have ac ratings only.

Section 4



Types 4/4X,
 Stainless Steel, Watertight, Dust Tight

NEMA Type 4/4X

Frame Type	Ampere Rating	No. of Poles	Product Number	List Price, GO-134	Neutral Product Number	List Price, GO-134	Neutral for Ground Fault ¹	List Price, GO-134	Current Trans. For Ground Fault ¹	List Price, GO-135S
TEB, THED, TED	100	2, 3	TE100CS ²	\$678.00	Included	-	-	-	-	-
SE150	100	2, 3	SE100CS ²	\$678.00	Included	-	-	-	-	-
TEJ, TFK, THFK	225	2, 3	TF225CS	\$1384.00	TNIA225	\$98.50	-	-	-	-
SF250	250	2, 3	SF250CS	\$1384.00	TNIA225	\$98.50	-	-	-	-
TJD, TJK, TJJ, THJK	400	2, 3	TJ400CS ^{3,4}	\$2650.00	TNIA400	\$122.00	-	-	-	-
					TNIA400	\$122.00	-	-	-	-
TJK, THJK	600	2, 3	TJ600CS ⁴	\$4749.00	TNIA600	\$180.00	-	-	-	-
					TNIA600	\$180.00	-	-	-	-
SG400	400	2, 3	SG400CS ⁵	\$2650.00	TNIA400	\$122.00	TNIA400VG	\$122.00	TSRG201 TSRG204	\$532.00 \$532.00

¹Neutral for Ground Fault required to mount neutral sensor in enclosure.

²Neutral not included; if required, order Product Number TNI100. **List Price \$80.50, GO-134.**

³Suitable for parallel 250 kcmil maximum. If larger cable is applied, use 600 amp enclosure.

⁴Not UL listed.

⁵Not suitable for 3-Phase, 4-wire or Single-Phase, 4-wire ground fault applications.



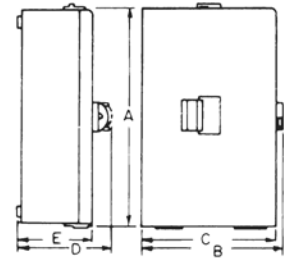
Publications and Reference: See Section 22 for a complete list of additional product-related publications

Circuit Breaker Enclosures Dimensions and Outline Drawings

Section 4

NEMA Type 1 Enclosures

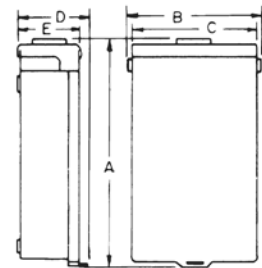
Product Number	Dimension ¹ A (in.)	Dimension ¹ B (in.)	Dimension ¹ C (in.)	Dimension D (in.)	Dimension E (in.)	Outline Drawing No.
TE100F, S	17	-	7 7/8	5 1/2	4 3/4	139C5651 Sh 1
TE150F, S	26 7/16	8 7/8	8 7/8	6 3/16	5 1/2	139C5497 Sh 1
TF225F, S	29 7/8	8 7/8	8 7/8	6 3/16	5 1/2	139C5497 Sh 2
SG400F	31 3/8	-	15 5/32	7 5/16	6 5/8	208C2891 Sh 1
SG400S	30 5/16	-	14 1/8	7 5/16	6 5/8	208C2891 Sh 1
TJ400F, S ²	27 7/16	15 7/16	15 7/16	7 1/8	6 7/16	139C5497 Sh 3
SG600F	44	-	18 3/16	9	8 3/8	208C2891 Sh 1
SG600S	42 3/4	-	17 1/8	9	8 3/8	208C2891 Sh 2
TJ4V600F, S	46 5/8	17 3/16	17 3/16	9 1/16	8 3/8	139C5497 Sh 4
TJ600F, S	46 5/8	17 3/16	17 3/16	9 1/16	8 3/8	139C5497 Sh 4
TJ9V600F, S	46 5/8	17 3/16	17 3/16	9 1/16	8 3/8	139C5497 Sh 4
TK4V1200F, S	48 1/8	21 15/16	21 15/16	9 9/16	8 11/16	139C5497 Sh 5
TQC100F, S	15 1/4	-	6 7/8	4 3/4	4	139C5651 Sh 1
TQD225F, S	26 7/16	8 7/8	8 7/8	6 3/16	5 1/2	139C5497 Sh 1
TQL100F, S	15 1/4	-	6 7/8	4 3/4	4	139C5651 Sh 1
TQL125F, S	16 7/8	-	6 3/4	5 3/16	4 1/2	139C5651 Sh 2



NEMA Type 1
Suffix F (Flush) Suffix S (Surface)

NEMA Type 3 Enclosures

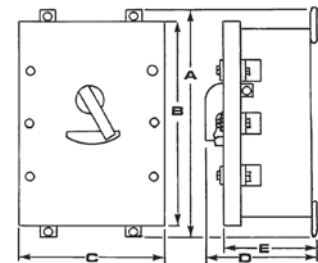
Product Number	Dimension A (in.)	Dimension B (in.)	Dimension C (in.)	Dimension D (in.)	Dimension E (in.)	Outline Drawing No.
TE100R	18 1/8	7 7/8	7 1/2	5 11/16	5 3/8	139C5652 Sh 1
TE150R	27 7/16	10 1/4	10	6 1/4	5 1/2	139C5498 Sh 1
TF225R	30 13/16	10 1/4	10	7	6 1/4	139C5498 Sh 2
SG400R	30 13/16	14 15/16	14 5/8	9 1/8	8	208C2837 Sh 1
SG600R	43	18 7/8	18 1/6	8 13/16	7 11/16	208C2838 Sh 1
TJ400R ²	27 5/16	15 7/8	15 11/16	8 11/16	8	139C5498 Sh 4
TJ4V600R	46 3/16	18 1/16	18 1/16	8 5/8	7 5/8	139C5519 Sh 1
TJ600R	46 3/16	18 1/16	18 1/16	8 5/8	7 5/8	139C5519 Sh 1
TJ9V600R	46 3/16	18 1/16	18 1/16	8 5/8	7 5/8	139C5519 Sh 1
TK4V1200R	47 3/4	23 3/8	22 9/16	9 7/16	8 5/16	139C5520 Sh 1
TQC100R	15 3/4	7 7/8	7 1/2	5 11/16	5 3/8	139C5652 Sh 1
TQD150NRE	26 13/16	7 13/16	7 5/8	5 1/8	4 7/16	139C5498 Sh 3
TQD200NRE	26 13/16	7 13/16	7 5/8	5 1/8	4 7/16	139C5498 Sh 3
TQD225NR	26 13/16	7 13/16	7 5/8	5 1/8	4 7/16	139C5498 Sh 3
TQD225R	26 3/8	10 1/4	10	6 1/4	5 1/2	139C5498 Sh 1
TQL100R	17	7 1/4	6 7/8	6	5	139C5652 Sh 1
TQL125R	18 5/16	7 11/16	7 1/2	6 5/16	5 3/16	139C5652 Sh 1



NEMA Type 3R Outdoor Enclosure

NEMA Type 4/4X Enclosures

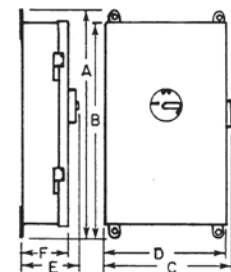
Product Number	Dimension A (in.)	Dimension B (in.)	Dimension C (in.)	Dimension D (in.)	Dimension E (in.)	Outline Drawing No.
SE100CS	19 1/4	18 1/2	8 1/2	7	5	139C5654 Sh 1
TE100CS	19 1/4	17 1/4	8 1/2	7	5	139C5654 Sh 1
TF225CS	32 5/8	30 13/16	9 1/4	8 15/16	7 1/16	139C5496 Sh 1
SF250CS	36 5/8	34 13/16	9 1/4	7 27/32	5 29/32	168D1626 Sh 1
TJ400CS ²	29 1/4	27 1/2	16 1/4	9 1/16	7 1/8	139C5496 Sh 2
TJ4V600CS	46 1/4	45 1/2	19 1/8	9 1/16	7 1/8	139C5496 Sh 3
SG400CS ³	32	31 1/4	14 1/8	9 5/16	7 7/16	208C2888 Sh 1
TJ600CS	46 1/4	45 1/2	19 1/8	9 1/16	7 1/8	139C5496 Sh 3



NEMA Type 4/4X Stainless Steel

NEMA Type 12 and 12K Enclosures

Product Number	Dimension A (in.)	Dimension B (in.)	Dimension C (in.)	Dimension D (in.)	Dimension E (in.)	Dimension F (in.)	Outline Drawing No.
TB100J	23 1/8	21 5/8	9	8	5 3/4	4 3/8	139C5653 Sh 1
TB400J	48 7/16	46 15/16	17 3/4	17 3/16	9 3/4	8 3/8	139C5682 Sh 5
TB800J	56 5/16	54 13/16	22 11/16	22	10 7/16	8 11/16	139C5682 Sh 6
SE100J, D	19 1/4	17 7/8	9	5	5 3/4	4 7/8	139C5653 Sh 2
TE100J, D	19 1/4	17 7/8	9	5	5 3/4	4 7/8	139C5653 Sh 1
SF250J	36 1/4	35 3/8	9 13/16	9 3/16	7 9/16	6 1/2	208C2884 Sh 2
TF225J	31 3/4	30 1/4	9 1/2	9	7 9/16	6 7/16	139C5682 Sh 2
SG400J	31 3/8	30 1/2	16 5/16	15 11/16	7 7/8	6 9/16	208C2885 Sh 2
TJ400J ²	29 5/16	27 13/16	14 1/4	13 3/16	7 7/8	6 7/16	139C5682 Sh 4
TJ4V600J	48 7/16	46 15/16	17 3/4	17 3/16	9 3/4	8 3/8	139C5682 Sh 5
SG600J	44 7/8	44	18	17 3/8	9 9/16	8 3/8	208C2886 Sh 1
TJ600J	48 7/16	46 15/16	17 3/4	17 3/16	9 3/4	8 3/8	139C5682 Sh 5
TJ9V600J	48 7/16	46 15/16	17 3/4	17 3/16	9 3/4	8 3/8	139C5682 Sh 5
SK1200J	56 5/16	55 7/16	22 11/16	22	10 7/16	8 11/16	139C5682 Sh 6
TK4V1200J	56 5/16	54 13/16	22 11/16	22	10 7/16	8 11/16	139C5682 Sh 6
TK9V1200J	56 5/16	54 13/16	22 11/16	22	10 7/16	8 11/16	139C5682 Sh 6
TK1200J	56 5/16	54 13/16	22 11/16	22	10 7/16	8 11/16	139C5682 Sh 6



NEMA Type 12 and 12K
Suffix D (with KOs) Suffix J (without KOs)

¹Flush front extends approximately 5/8-inch beyond each side.

²Suitable for parallel 250 kcmil maximum. If larger cable is applied, use 600 amp enclosure.

³Not suitable for use with ground fault.



Publications and Reference: See Section 22 for a complete list of additional product-related publications