

# LytePro7

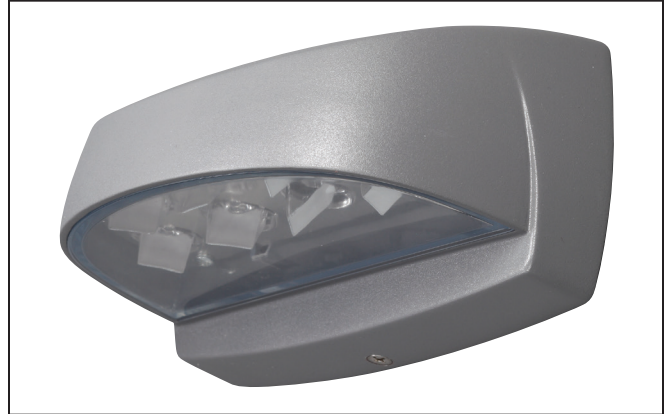
## Architectural LED Wall Sconce

Page 1 of 2

### Features

- 555 lumen system providing advantageous replacement of 35W HPS, 28W CFL or 100W incandescent with only 13W energy consumption.
- Provides safety and security in residential and light commercial applications in locations such as entrances, over garages, illuminate house numbers, wall signs, and located along perimeters and pathways.
- Seven high-output LEDs having an average rated life of 60,000 hours ( $L_{70}$ )
- Patented Philips LED Optical System individually controls the placement of light in the target area minimizing glare.
- 41000K neutral colour temperature delivers light with minimal waste
- Type III distribution with shielded optics and minimal uplight.
- Individual precision collimating optics collects and redirects light to optimize performance.
- Functions in environments with temperatures that range from  $-30^{\circ}\text{C}$  to  $40^{\circ}\text{C}$ .
- Housing constructed of heavy die cast aluminum and fully gasketed.
- Corrosion resistant Duraplex II polyester powder coated finish available in white and titanium.
- Fully enclosed bottom and protected with clear acrylic lens.
- Electronic Class II LED driver accepts 120-220V, 50/60Hz input (constant current).
- Universal mounting plate with hook and lock mounting, including built-in bubble level for accuracy, and complete with integral splice chamber.
- Optional field installed button-type photocontrol for automatic all night light. Order catalogue number P105A.
- Patent Pending Design.
- cETLus tested suitable for wet location
- 3 year Standard Limited Warranty

### Provides 555 lumens cETLus tested for wet locations



### Job Information

Type:

Job Name:

Cat. No.:

Lamp(s):

Notes:

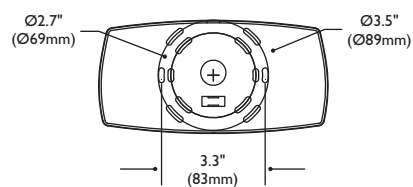
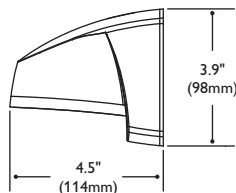
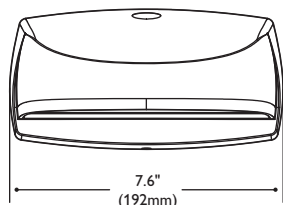


# LytePro7

## Architectural LED Wall Sconce

Page 2 of 2

### Dimensions



### Ordering information

Explanation of catalog number: Example: LP7T



**Job Information**

**Type:**



© 2013 Koninklijke Philips N.V. (Royal Philips). All rights reserved.  
Specifications are subject to change without notice.  
[www.philips.com/luminaires](http://www.philips.com/luminaires)

SD0958 06/13

Philips Lighting Company  
200 Franklin Square Drive  
Somerset, NJ 08873  
Phone: 855-486-2216

Philips Lighting Company  
281 Hillmount Road  
Markham ON, Canada L6C 2S3  
Phone: 800-668-9008