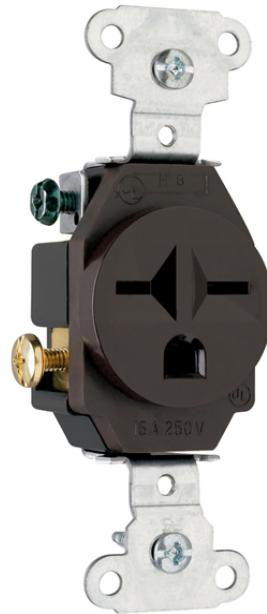


Heavy-Duty Spec Grade Single Receptacles, Side Wire, 15A, 250V, Brown

5651



Heavy-Duty Spec Grade Single Receptacle
Side Wire 15amp 250volt Brown



features & benefits

- Auto-ground clip assures positive ground.
- Two drive screws anchor strap to back body and face where abrupt removal torque is greatest.
- Heavy-duty, corrosion-resistant zinc-plated steel strap for added strength.
- Backed-out tr-drive steel terminal screws. Internal screw-pressure-plate back and side wire capability. Two back wire holes for increased wiring flexibility.
- One-piece brass triple-wire power contacts for lasting retention.
- For covering patents, see www.legrand.us/patents.

specifications

General Info

Color: Brown
Type: Single Receptacles
Duty: Heavy Duty
Special Features: Side Wire

Listing Agencies/Third Party Information

CSA Listing Info: c22.2 No. 42
CSA Standard: Yes
Federal Spec: No
UL Listing No: UL498
UL Standard: Yes
UN SPS C: 39121406

UR: No

Dimensions

Depth U S: 1.08"

Height U S: 3.28"

Width U S: 1.32"

Technical Information

Amps: 15A

Volts: 250V

Volts A C: 250

Capacity: Single

Grade Type: Federal Specification

Buy American Act Compliance

Country of Origin: MEXICO

Buy American Act Status: Trade Agreement Act Compliant