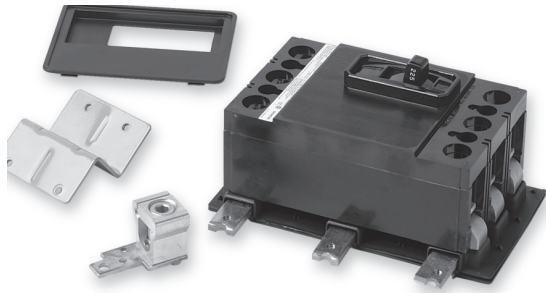


Distributor Stock Panelboards

SELECTION

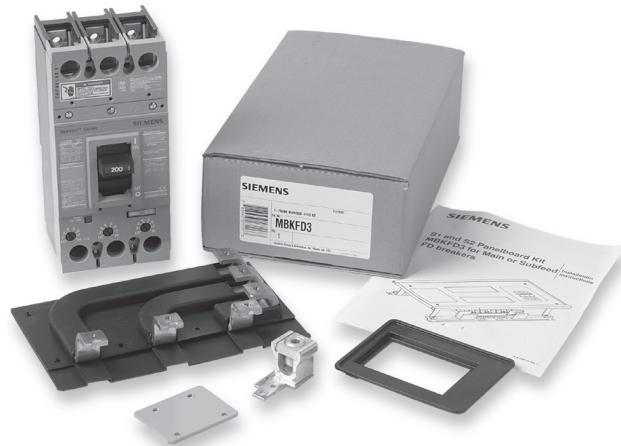
Type P1 Panelboards



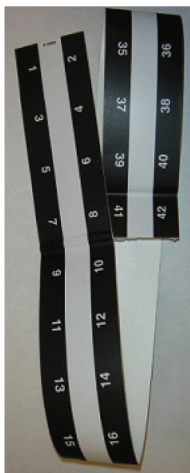
MBKQJ3
(Breaker not included)

Breaker Mounting Kits – Main or Subfeed (Breaker not included)

Amp Rating	Main	Sub-feed	Breaker Frames	Service	Catalog No.
100	Yes	Yes	BL, BLH, HBL	1 Phase	MBKBL1
				3 Phase	MBKBL3
100	Yes	Yes	BQD6	1 Phase	MBKBC1
				3 Phase	MBKBC3
125	Yes	Yes	ED2, ED4, ED6, HED4	1 Phase	MBKED1
				3 Phase	MBKED3
225	Yes	Yes	QJ2, QJH2, QJ2-H	1 Phase	MBKQJ1
				3 Phase	MBKQJ3
250	Yes	Yes	FXD6, FD6, HFD6	1 Phase	MBKFD1
				3 Phase	MBKFD3
400	Yes	No	JD6, JXD6, HJD6, HHJD6	1 Phase	MBKJD1
				3 Phase	MBKJD3



MBKFD3
(Breaker not included)



NBK03 **NBK03-UL**
Both number strips are supplied in P1

1	8	15	22	29	36
2	9	16	23	30	37
3	10	17	24	31	38
4	11	18	25	32	39
5	12	19	26	33	40
6	13	20	27	34	41
7	14	21	28	35	42

Miscellaneous Accessories

Catalog No.	Description
NBK04	Number Strips 43-84
NBK05	Number Strips 85-126
NBK06	Number Strips 127-168
ECGK	Cu Ground Bus 44 Connections
IGK	Insulated Al Ground Bus
ICGK	Insulated Cu Ground Bus
EWK1	End-Wall Kit with Knockouts (20"W x 5.75"DP)
QF3 - UL	Filler Plate
SDKN	Dripshield Kit (20"W x 5.75"DP)

Distributor Stock Panelboards

SELECTION

Circuit Breaker / Lighting and Distribution

Branch Breakers Selection for P1

Selection Guide

1. Select breaker type.
2. Select required amperage.
3. Select number of poles.
4. Select branch breaker catalog numbers.
5. Select ground bus and filler plates. (See replacement parts & accessories on page 5 & 6.)

BL Branch Breakers – 10,000A IR

Amp Rating	1-Pole 120/240V	2-Pole 120/240V	2-Pole 240V	3-Pole 240V
15	B115	B215	B215R	B315
20	B120	B220	B220R	B320
25	B125	B225	B225R	B325
30	B130	B230	B230R	B330
40	B140	B240	B240R	B340
50	B150	B250	B250R	B350
60	B160	B260	B260R	B360
70	B170	B270	B270R	B370
80	–	B280	B280R	B380
90	–	B290	B290R	B390
100	–	B2100	B2100R	B3100

BLH Branch Breakers – 22,000A IR

Amp Rating	1-Pole 120/240V	2-Pole 120/240V	3-Pole 240V
15	B115H	B215H	B315H
20	B120H	B220H	B320H
25	B125H	B225H	B325H
30	B130H	B230H	B330H
40	B140H	B240H	B340H
50	B150H	B250H	B350H
60	B160H	B260H	B360H
70	B170H	B270H	B370H
80	–	B280H	B380H
90	–	B290H	B390H
100	–	B2100H	B3100H

HBL Branch Breakers – 65,000A IR

Amp Rating	1-Pole 120/240V	2-Pole 120/240V	3-Pole 240V
15	B115HH	B215HH	B315HH
20	B120HH	B220HH	B320HH
30	B130HH	B230HH	B330HH
40	B140HH	B240HH	B340HH
50	B150HH	B250HH	B350HH
60	–	B260HH	B360HH
70	–	B270HH	B370HH
80	–	B280HH	B380HH
90	–	B290HH	B390HH
100	–	B2100HH	B3100HH

BQD6 Branch Breakers – 10,000A IR Max

Amp Rating	1-Pole 347V	2-Pole 600Y/347V	3-Pole 600Y/347V
15	BQD6115	BQD6215	BQD6315
20	BQD6120	BQD6220	BQD6320
25	BQD6125	BQD6225	BQD6325
30	BQD6130	BQD6230	BQD6330
35	BQD6135	BQD6235	BQD6335
40	BQD6140	BQD6240	BQD6340
45	BQD6145	BQD6245	BQD6345
50	BQD6150	BQD6250	BQD6350
60	BQD6160	BQD6260	BQD6360
70	BQD6170	BQD6270	BQD6370

For detailed circuit breaker information please consult Section #6.

PANELBOARDS

Main Breaker Selection (Breaker Kit)

Catalogue No.	Description	Ratings 240V	Ratings 480V	Ratings 600V
MBKBL12100	Kit with 2-Pole BL 100A Breaker	10KA	–	–
MBKBL33125	Kit with 3-Pole BL 125A Breaker	10KA	–	–
MBKBC12100	Kit with 2-Pole BQD6 100A Breaker	65KA	14KA	10KA
MBKBC33100	Kit with 3-Pole BQD6 100A Breaker	65KA	14KA	10KA
MBKED33100	Kit with 3-Pole ED6 100A Breaker	65KA	25KA	18KA
MBKED33125	Kit with 3-Pole ED6 125A Breaker	65KA	25KA	18KA
MBKQJ12125	Kit with 2-Pole QJ2 125A Breaker	10KA	–	–
MBKQJ33150	Kit with 3-Pole QJ2 150A Breaker	10KA	–	–
MBKQJ33200	Kit with 3-Pole QJ2 200A Breaker	10KA	–	–
MBKQJ33225	Kit with 3-Pole QJ2 225A Breaker	10KA	–	–
MBKFD33225	Kit with 3-Pole FXD6 225A Breaker	65KA	35KA	18KA
MBKFD33250	Kit with 3-Pole FXD6 250A Breaker	65KA	35KA	18KA
MBKJD33400	Kit with 3-Pole JXD6 400A Breaker	65KA	35KA	25KA

Other Breaker kits available. Please contact your local Siemens representative.



MBKFD33250
(Breaker included)



Selection and Application

3 Easy Steps for Selecting a Siemens P1 Panelboard

Step 1

– Determine voltage, system, amperage and interrupting rating of branch devices, and modifications if any.

Example for standard lighting panelboard:

Amperage	250A
Voltage	208Y/120V
System	3Ø4W
Main	Main Lug
Branches	10K AIR, 42-20/1
Modifications	None
Feed Location	Top
Mounting	Surface

Step 2

– Create a catalog number by following the Panelboard Catalog Numbering System on page 7/6.

1-P1C42ML250ATS
42-20/1 BL

Step 3

– Select enclosure size by the number of circuits as shown in the panelboard main lugs only chart on page 7/8.

1-P1C42ML250ATS
42-20/1 BL
Box size – 44" high

A unique feature of the P1 panels is that they can accommodate either feed-thru lugs or one sub-feed circuit breaker (up to 250A) without any addition in box height. For our example changing the branch circuits to 39-20/1 and 1-125/3, we have the following:

1-P1C42ML250ATS
39-20/1 BL
1-125/3 QJ2
3-Spaces
Box size – 44" high

The QJ2 sub-feed was selected from the table of sub-feed breakers on page 7/9. The box height remains the same.

Circuit Breaker / Lighting & Distribution

**600Y/347 Vac Max.
250 Vdc Max.
400 Ampere Mains
250 Ampere Maximum Subfeed Breaker
CSA/UL Short Circuit Rating —
200,000A IR Maximum *
Breaker Symmetrical
Interrupting Capacity**

Main Breakers

For main breaker selection please refer to chart on page 7/11. Connector ranges indicated do not apply to all main breaker types. Refer to molded case circuit breaker standard pressure wire connectors.

Boxes

20" wide, 5.75" deep (400A max)
End-walls are blank as standard.
End-walls with knockouts are available.

Weight — Approximate

Total panelboard weight when filled with a normal quantity of breakers and accessories is about 3 lbs. per inch of box height.

Main Breaker Panel Connectors

Amp Rating	Connectors Suitable for Cu or Al
100	(1) - #14 - 1/0 AWG
125	(1) - #4 - 1/0 AWG
225	(1) - #4 AWG - 300 Kcmil
250	(1) - #4/0 AWG - 350 Kcmil Al
	(1) - #6/0 AWG - 350 Kcmil Cu
400	(2) - #4/0 AWG - 250 Kcmil
	(1) - #4/0 AWG - 500 Kcmil

Gutters (Wiring Space)

Breaker Type	Main Lug	Main Breaker	Branch Breaker
125/250A	10.5"	N/A	N/A
400A	25.5"	N/A	N/A
BL, BLH, HBL, BQD6	N/A	8.5"	6.375"
QJ, QJH2, QJ2H	N/A	6.5"	6.5"
ED4, ED6, HED4	N/A	6.125"	6.125"
FXD6, FD6, HFD6	N/A	5.25"	5.25"
JXD6, ¹ JD6, ¹ HJD6 ¹	N/A	15.0"	—

¹ 400A main breaker is vertical mount

Main Lug Connectors

Amp Rating	Connectors Suitable for Cu or Al
125	(1) - #6 AWG - 350 Kcmil
250	(1) - #6 AWG - 350 Kcmil
400	(2) - #4/0 AWG - 250 Kcmil
	(1) - #4/0 AWG - 600 Kcmil

Box Material Gauge

Width	Height	Gauge Steel
20" (250A Max)	32, 38, 44	#16
20" (Above 250A)	56, 62, 68	#16

Trim Material Gauge

Width	Height	Gauge Steel
20" (250A Max)	32, 38, 44	#14
20" (Above 250A)	56, 62, 68	#14

* IR Rating will depend on the type of main breaker applied or if main breaker is "Series Rated" with an up stream protective device (circuit breaker or fuse).

Factory Assembled Panelboards

SELECTION

Selection and Application

Main Lugs Only

Max Panel Amp Rating	Max 1-Pole Circuits	Box Ht. (in.)	Catalog No.			
			208Y/120V 3Ø4W	120/240V 1Ø3W	480Y/277V 3Ø4W	600Y/347V 3Ø4W
125	18	32	P1C18ML125ATS	P1A18ML125ATS	P1E18ML125ATS	P1L18ML125ATS
	30	38	P1C30ML125ATS	P1A30ML125ATS	P1E30ML125ATS	P1L30ML125ATS
	42	44	P1C42ML125ATS	P1A42ML125ATS	P1E42ML125ATS	P1L42ML125ATS
250	18	32	P1C18ML250ATS	P1A18ML250ATS	P1E18ML250ATS	P1L18ML250ATS
	30	38	P1C30ML250ATS	P1A30ML250ATS	P1E30ML250ATS	P1L30ML250ATS
	42	44	P1C42ML250ATS	P1A42ML250ATS	P1E42ML250ATS	P1L42ML250ATS
400	18	56	P1C18ML400ATS	P1A18ML400ATS	P1E18ML400ATS	P1L18ML400ATS
	30	62	P1C30ML400ATS	P1A30ML400ATS	P1E30ML400ATS	P1L30ML400ATS
	42	68	P1C42ML400ATS	P1A42ML400ATS	P1E42ML400ATS	P1L42ML400ATS

Aluminum Bus, Top Fed and Surface Mounted

Main Circuit Breaker

100	18	32	P1C18BL100ATS	P1A18BL100ATS	P1E18BD100ATS	P1L18BD100ATS
	30	38	P1C30BL100ATS	P1A30BL100ATS	P1E30BD100ATS	P1L30BD100ATS
	42	44	P1C42BL100ATS	P1A42BL100ATS	P1E42BD100ATS	P1L42BD100ATS
125	18	32	P1C18E2125ATS	P1A18E2125ATS	P1E18E6125ATS	P1L18E6125ATS
	30	38	P1C30E2125ATS	P1A30E2125ATS	P1E30E6125ATS	P1L30E6125ATS
	42	44	P1C42E2125ATS	P1A42E2125ATS	P1E42E6125ATS	P1L42E6125ATS
225	18	32	P1C18QJ225ATS	P1A18QJ225ATS	P1E18FX225ATS	P1L18FX225ATS
	30	38	P1C30QJ225ATS	P1A30QJ225ATS	P1E30FX225ATS	P1L30FX225ATS
	42	44	P1C42QJ225ATS	P1A42QJ225ATS	P1E42FX225ATS	P1L42FX225ATS
250	18	32	P1C18FX250ATS	P1A18FX250ATS	P1E18FX250ATS	P1L18FX250ATS
	30	38	P1C30FX250ATS	P1A30FX250ATS	P1E30FX250ATS	P1L30FX250ATS
	42	44	P1C42FX250ATS	P1A42FX250ATS	P1E42FX250ATS	P1L42FX250ATS
400	18	56	P1C18JX400ATS	P1A18JX400ATS	P1E18JX400ATS	P1L18JX400ATS
	30	62	P1C30JX400ATS	P1A30JX400ATS	P1E30JX400ATS	P1L30JX400ATS
	42	68	P1C42JX400ATS	P1A42JX400ATS	P1E42JX400ATS	P1L42JX400ATS

Aluminum Bus, Top Fed and Surface Mounted



PANELBOARDS